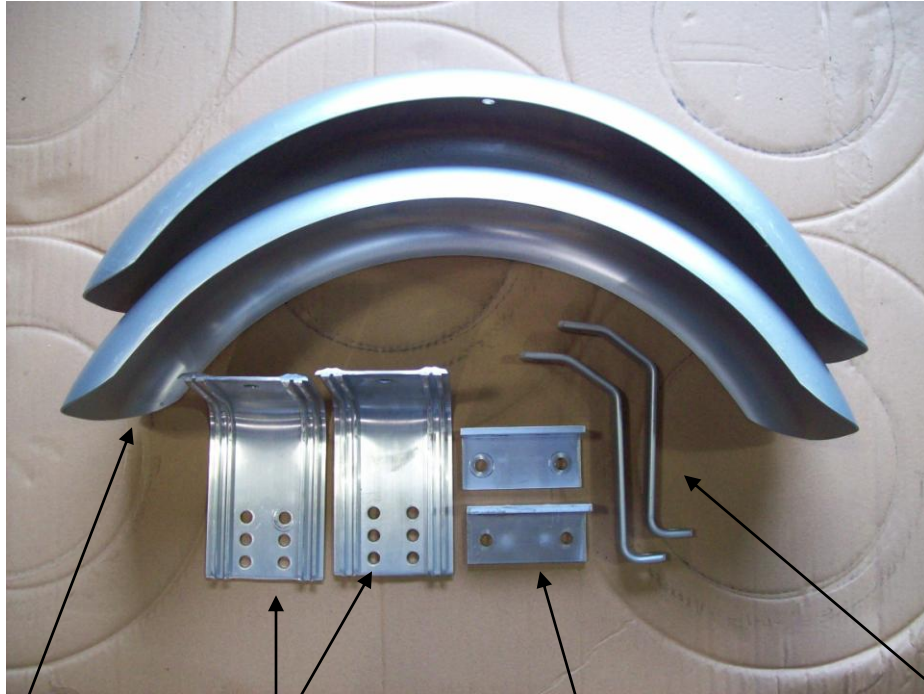


#22-000
ALUMINUM FENDER KIT FOR SUT-200-S

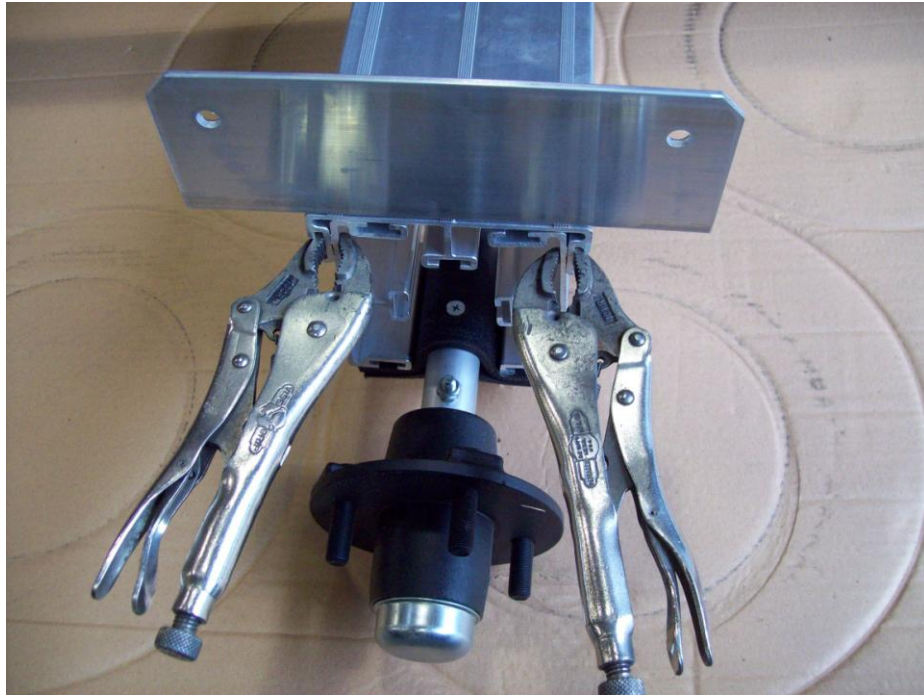
UNPACK AND IDENTIFY THE FOLLOWING PARTS.



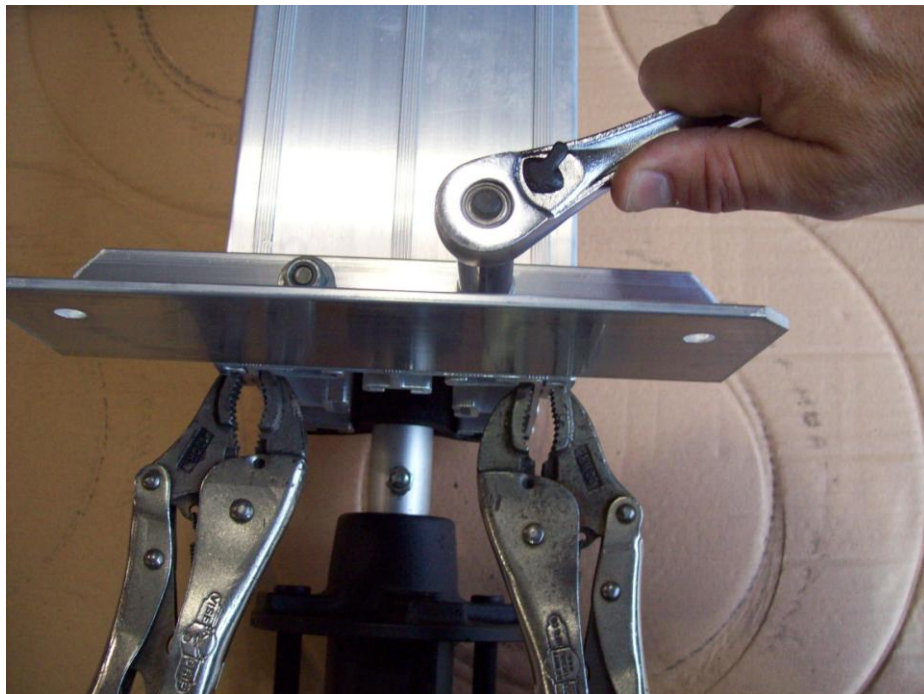
2) Fenders 2) Fender braces 2) Angle brackets 2) Fender brace stiffeners



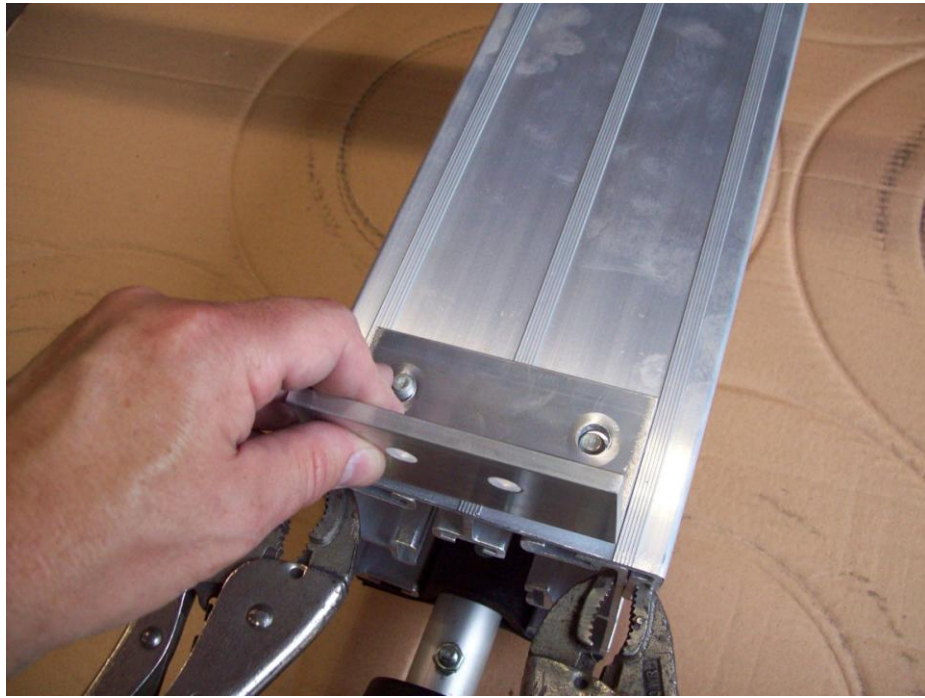
2) T-Bolts 4) 1" Bolts 2) 1 1/2" Bolt 2) Rubber washers 2) Steel washers 6) Small washer 8) Nuts



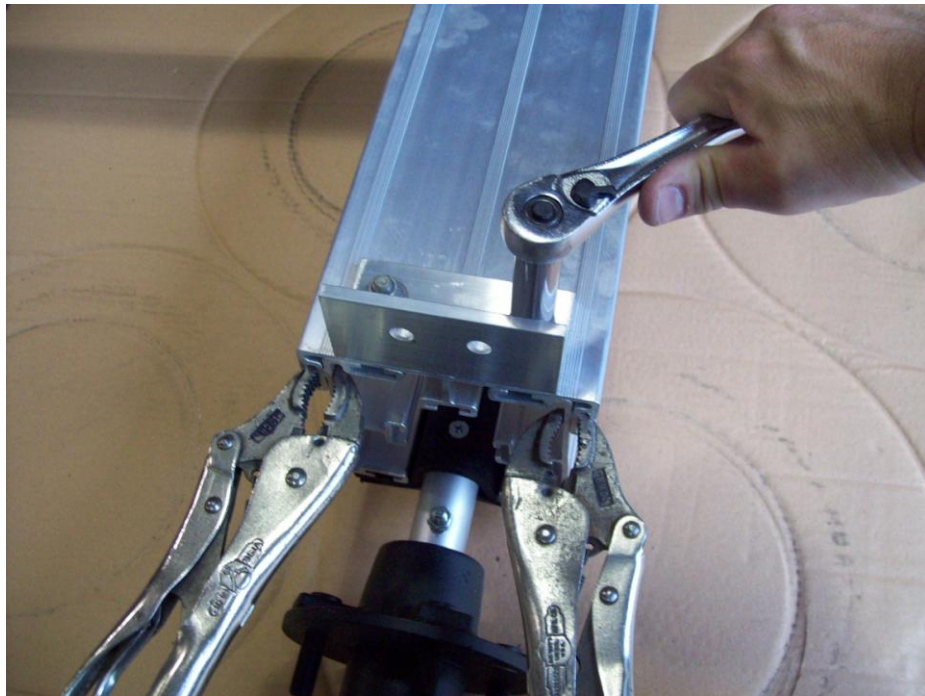
First remove plastic fender and wheel from both sides of axle assembly. Then attach two vise grip pliers or suitable clamp as shown to hold axle assembly in place when removing nuts.



Remove nuts and fender bracket. Nuts will be reinstalled on the new fender bracket.



Install the angle bracket onto the bolts as shown.



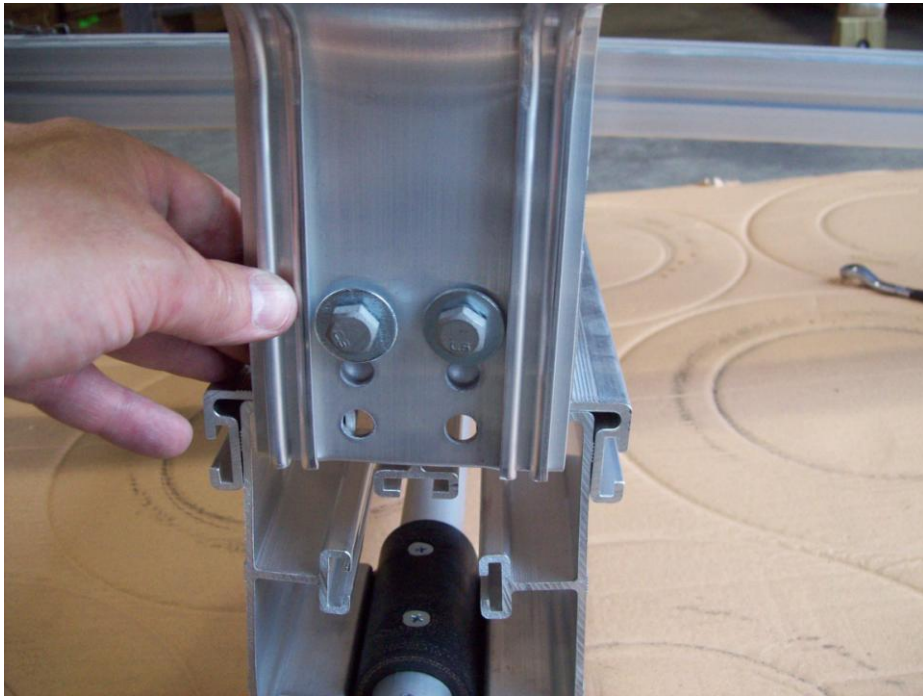
Reinstall nuts on angle bracket and tighten nuts. At this point remove the vise grip pliers.



Locate the fender brace 2) 1" bolts, 2) small washers and 2) nuts.



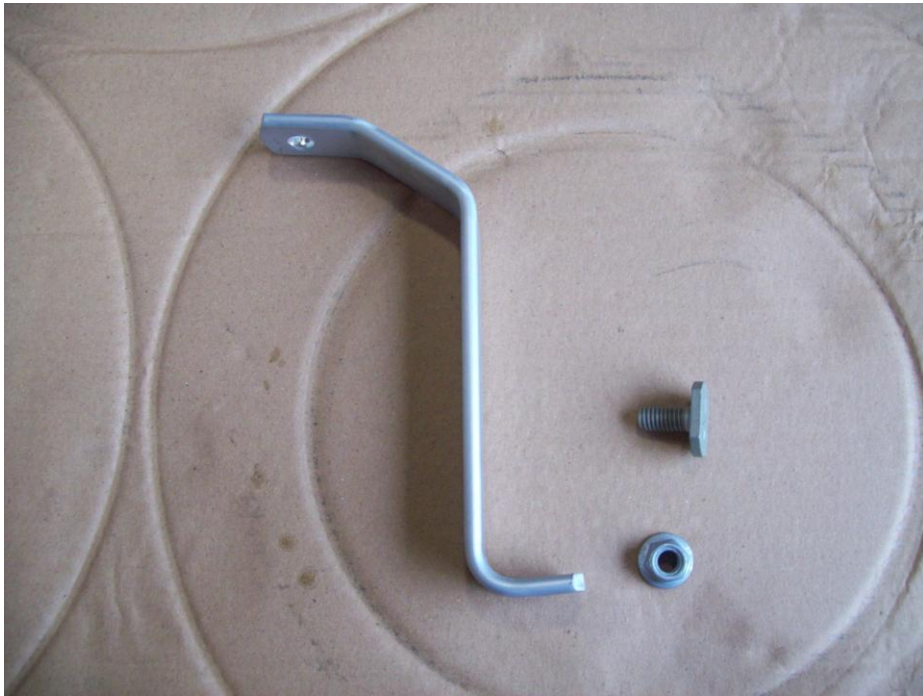
Insert the bolts and washers through the inside of the fender brace as shown.



Insert bolts from fender brace into the holes on the angle bracket.



Install nuts and tighten.



Locate fender brace stiffener, T-bolt and nut.



Install T-bolt and nut in brace as shown.



Insert T-bolt from brace into the center slot in the top of the axle assembly.



Locate the fender, rubber washer, steel washers big and small, nut and 1 1/2" bolt.



Place rubber washer over hole on top of the fender.



Lay big washer down first then place small washer on top.



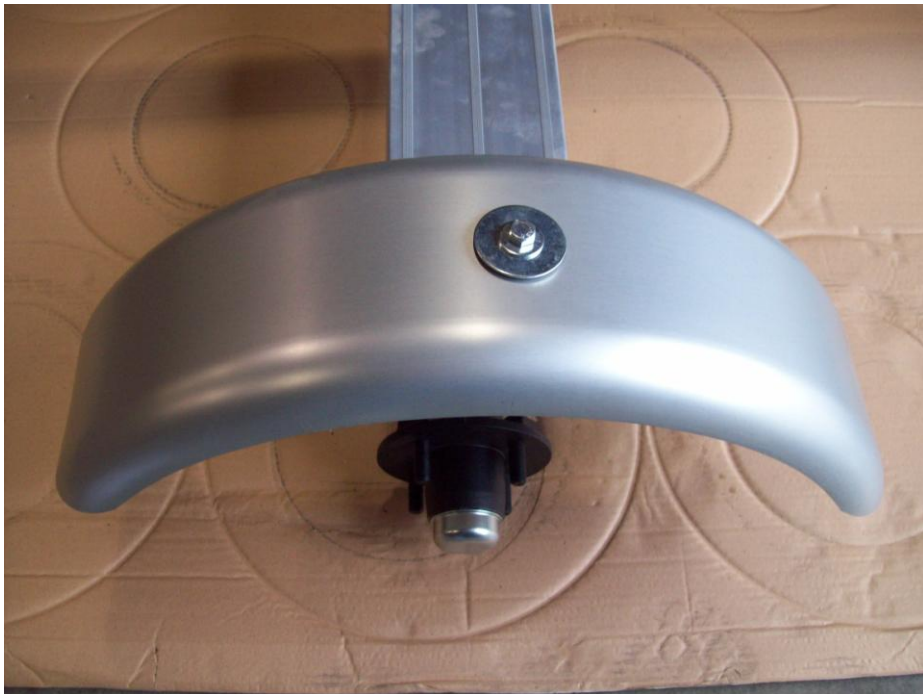
Insert bolt through washer, fender and brackets.



Install nut on the underside of fender.



Position fender then tighten nuts in place.



Finished fender.

KJM 6/18/10