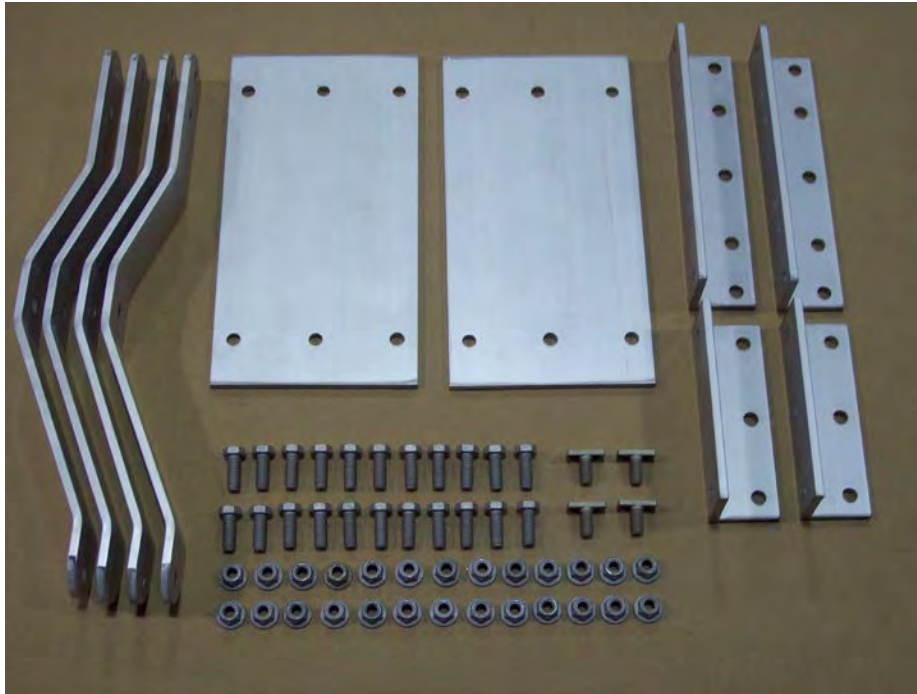


CTRWP Winch platform and 4-208 winch



Locate 4) side arms, 2) side plates, 2) winch mount angles, 2) base mount angles, 22) 1" bolts, 4) repair T-bolts, and 26) small flange nuts.



Winch, crank handle, 2) 1" bolts, 2) repair T-bolts, and 4) large flange nuts.



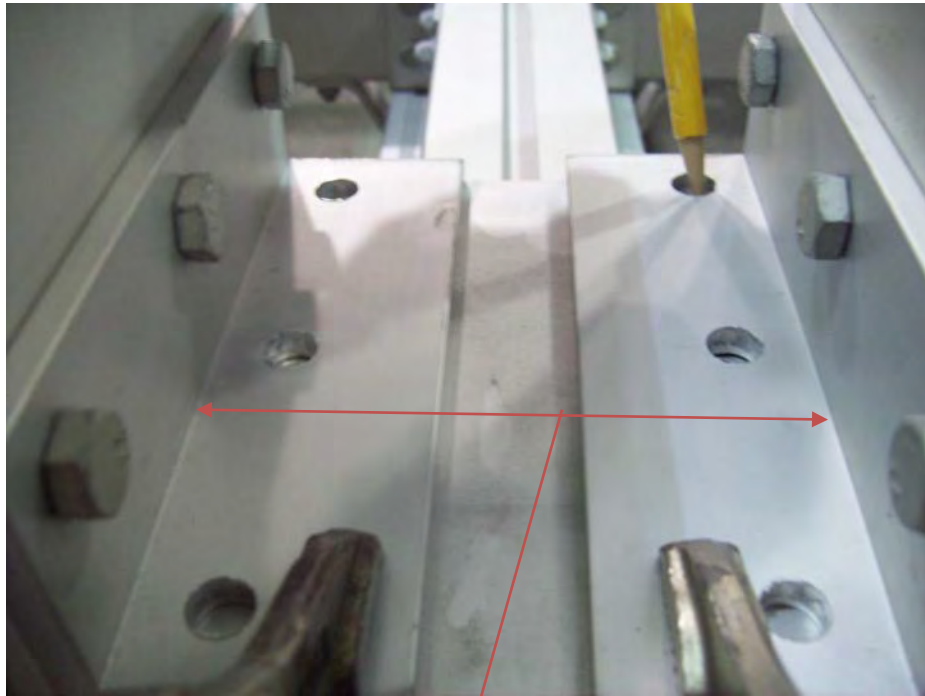
Locate the 2) side plates, 2) 6" base mount angles, 6) 1" bolts, and 6) small flange nuts.



Install bolts into base mount angle then into the side plates

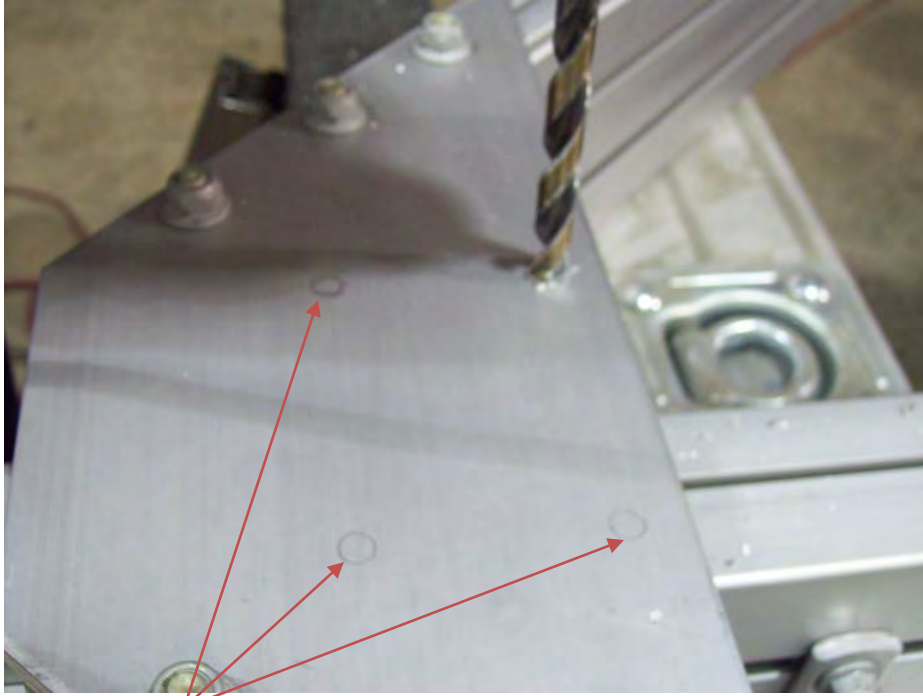


Install nuts and tighten.



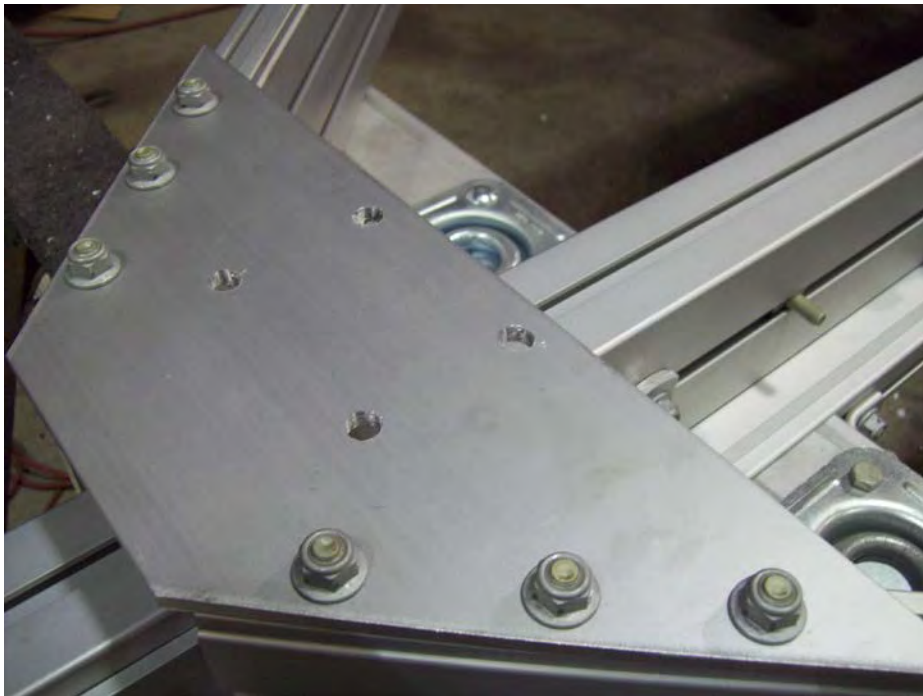
4 1/2 "apart

Set angles on top of the apex plate on the trailer and position 4 1/2" apart from each side. Once in position clamp the angles to apex plate. With a pencil mark the last two holes on each side.



Pencil marks

Remove angles and drill out pencil marks on the apex plate with a 3/8" drill bit.



Apex plate should look like this when all the holes are drilled out.



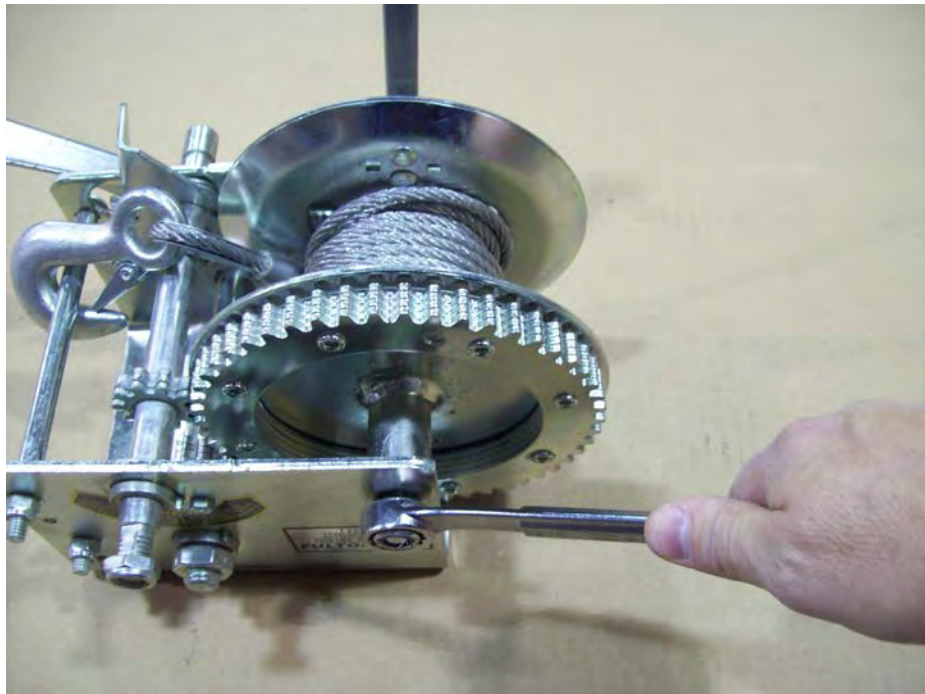
Set the angles back on the apex plate and insert bolts going down through the angles as shown.



Install nuts and tighten at this point.



Locate the winch, crank handle, 2) 1" bolts, 2) repair T-bolts, 4) large flange nuts and 2) 9" winch mount angles.



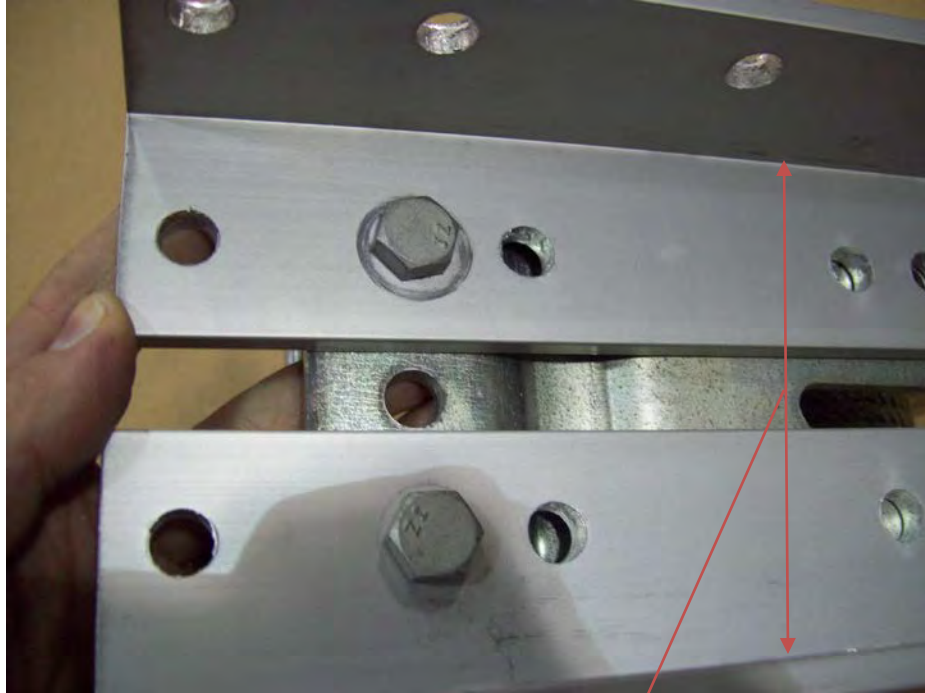
With two $\frac{3}{4}$ " box wrenches loosen the nut on the winch. Remove nut and slide the bolt out to remove the spool before drilling.



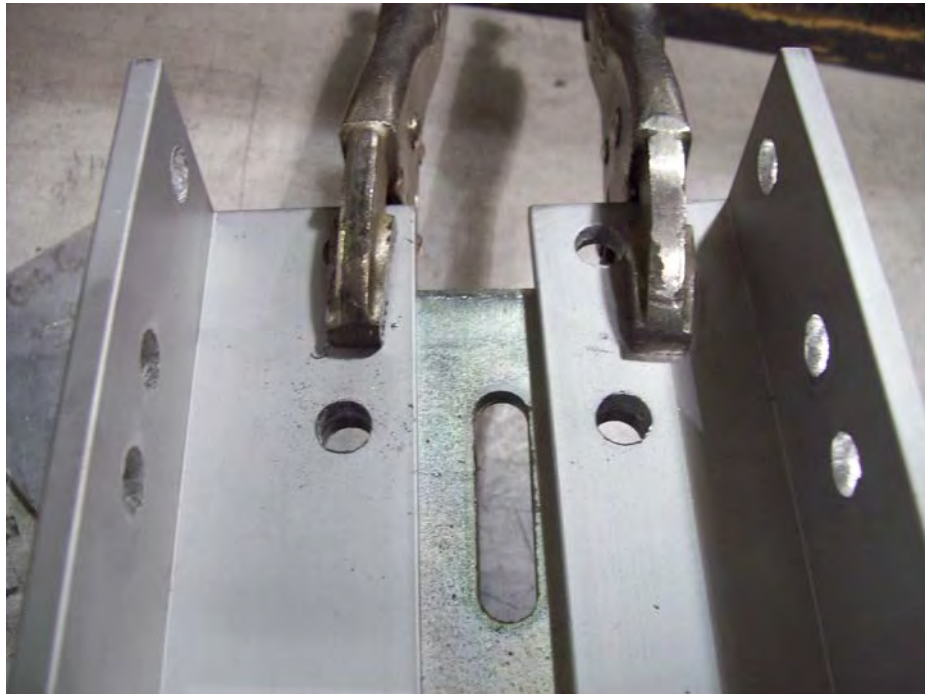
Remove spool carefully from winch base so the cable doesn't unwind. Spool could be block on both sides with wrenches as shown while drilling holes in base.



Install the 1" bolt in the angle bracket then into the slotted hole on the underside of the winch.



4 ½" from inside to inside
Position angle brackets 4 ½" apart and tighten nuts.



Once brackets are tight clamp angles at the other end and drill holes.



Remove clamp and install repair T-bolts on the inside of the winch base as shown.



Install nuts on the underside and tighten.



Reinsert the bolt into the winch base and spool. Install nut and tighten. Winch assembly with angles should look like this now.



Insert the 1" bolts through the back side of the mounting angles into the side plates and install nuts.



Tighten nuts on both of the side plates.



Insert one repair T-bolt on each side of the front tongue section. Repeat this process for the rear tongue section. These will be used to mount the side arm.



Install the front side arms in the second hole for the CT-7031 trailer. All other trailers use bottom mount holes.



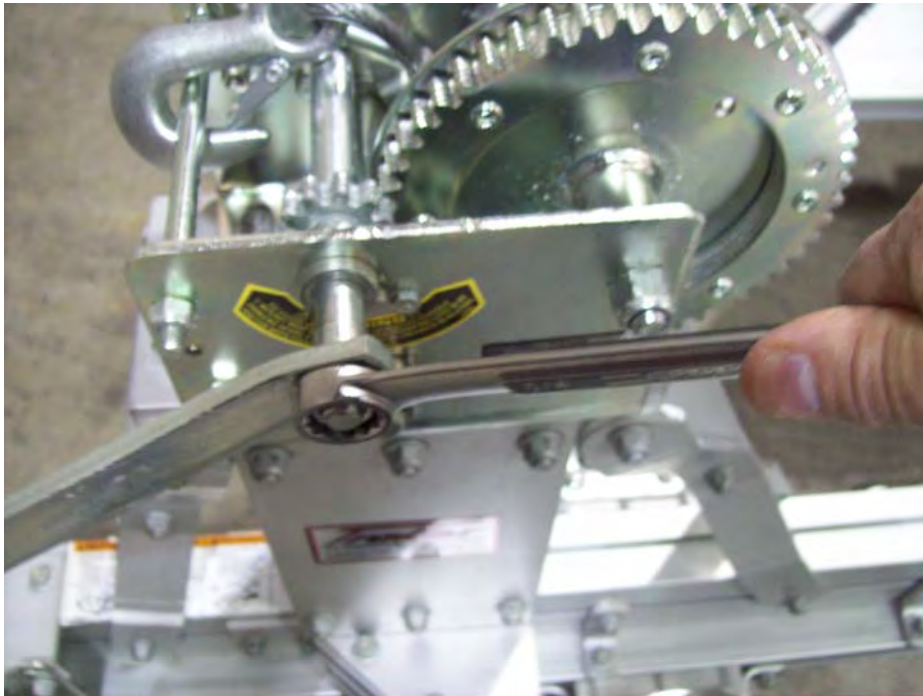
Insert a 1" bolt through the backside of the mounting angle into the side arm. Install nuts at the top and bottom of the side arms.



Insert one 1" bolt through the center of both side arms and install nut. Tighten all nuts on side arms at this point

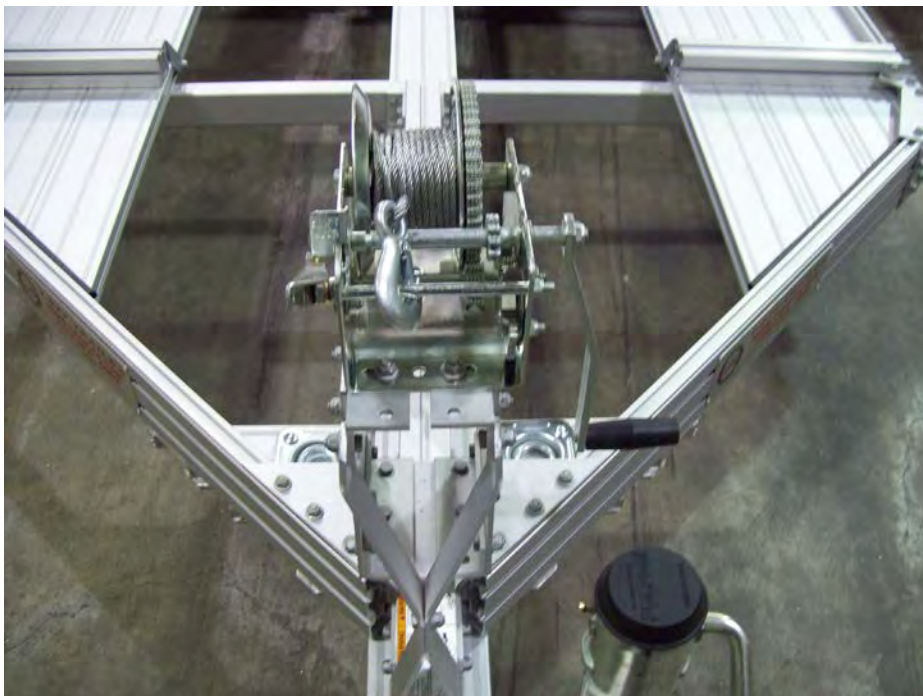
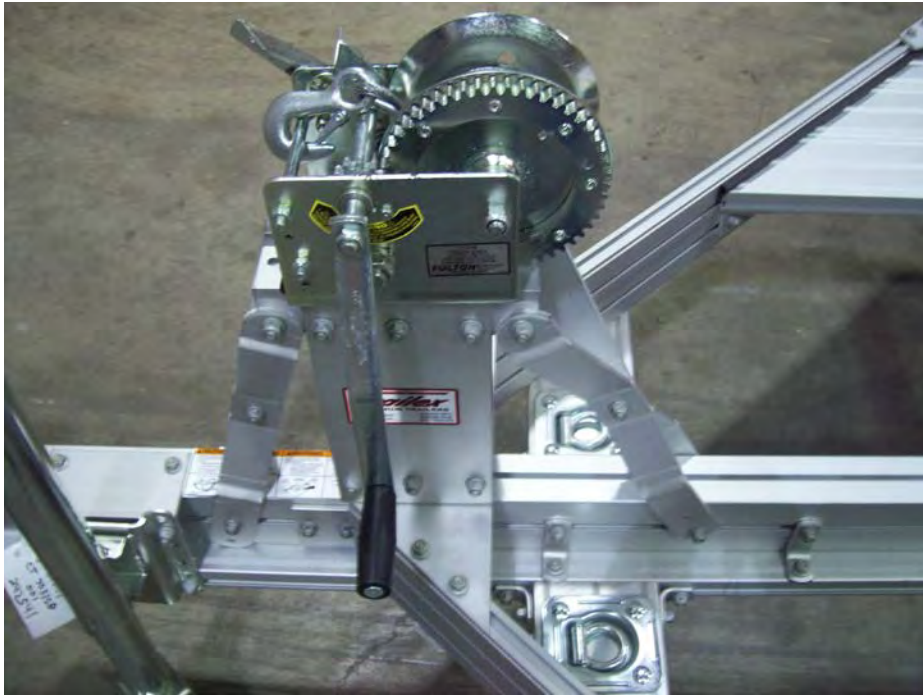


Repeat the process for the rear side arm. Rear side arms use the bottom holes on all open trailers. Side arms should look like this when finished.



Remove nut from shaft on the winch and install crank handle. Reinstall nut and tighten.

Finished winch platform



KJM 11/18/11