



CTUFS Universal Front Shield

Required tools



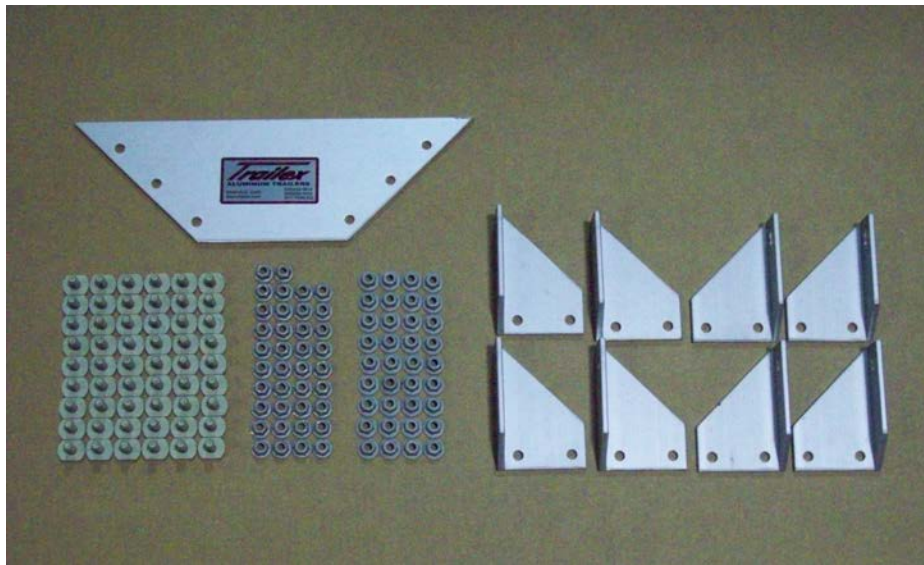
Torque wrench, ratchet with 9/16" socket, 9/16" open end wrench, and utility knife.

ASSEMBLY REQUIREMENTS

*Torque all T-bolt nuts to 35-40 foot pounds.

Failure to follow the assembly instructions could result in serious injury or death.
Incorrect assembly or modifications to your trailer will void any specific or implied warranty.
For questions or assistance assembling your front shield call 800-282-5042.

Parts list



Locate 1) top apex plate, 54) $\frac{3}{4}$ " T-bolts, 38) small flange nuts, 36) large flange nuts, and 8) angles $\frac{1}{4}$ "x1 $\frac{1}{2}$ " x 3 $\frac{1}{2}$ " L5" (4Left, 4Right).



1) Canvas shield, 2) 44" angle



2) Frames left and right



Remove the nuts on the top elbow plate.



Remove the outside corner plate as shown.



Install 4 T-bolts in the top slot of the diagonal rail.



Install 4 T-bolts in lower side slot of the diagonal rail.



Front diagonal should look like this when all the T-bolts are installed.



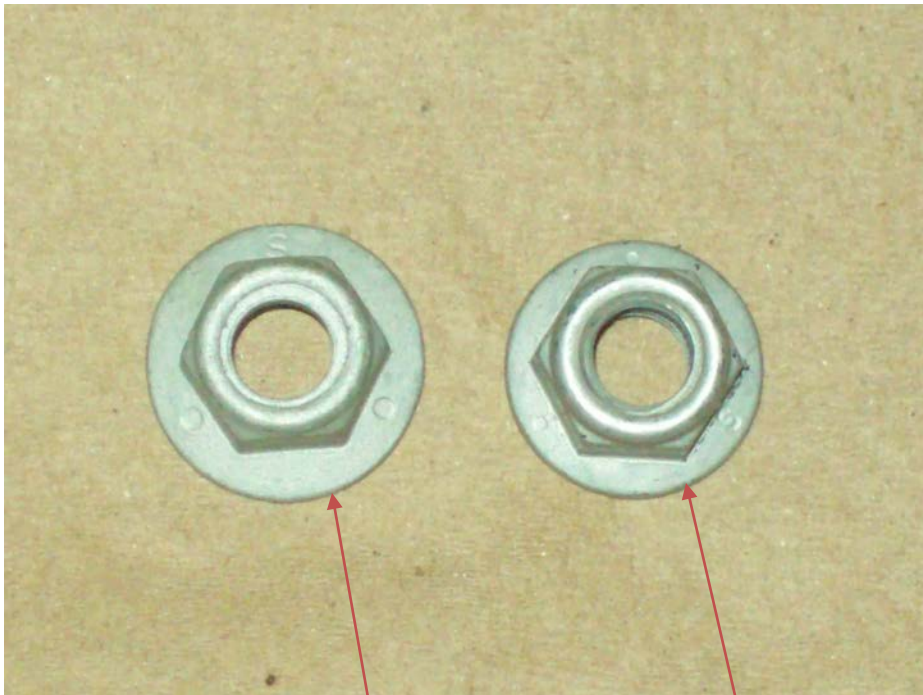
Reinstall the top elbow plate and the outside corner plate. Torque all the nuts to 40 ft lbs. Repeat this process for the other side.



Install the 44" angle on the four T-bolts at the bottom of the front diagonal.



Make sure the end that is cut faces the tongue of the trailer.



Large flange

Small flange



Install four small flange nuts on the T-bolts and just snug them up for now.



Install four T-bolts into the angle as shown with small flange nuts on the bottom side of the angle. Do not tighten nuts yet.



Two T-bolts

Insert the frame into the T-bolts and slide towards the tongue of the trailer. Repeat this process for the other side. Make sure the two T-bolts in the end of the vertical frame are facing out.



Install three T-bolts at the top of each frame toward the tongue. Place apex plate over top and install six large flange nuts. Do not tighten nuts yet.



Adjust the frames so they are 6" apart at the top and bottom as shown. At this point tighten up the nuts on the apex plate and the underside of the angles.



Install angle brackets and small flange nuts on each side of both inner vertical bars. Do not tighten nuts.



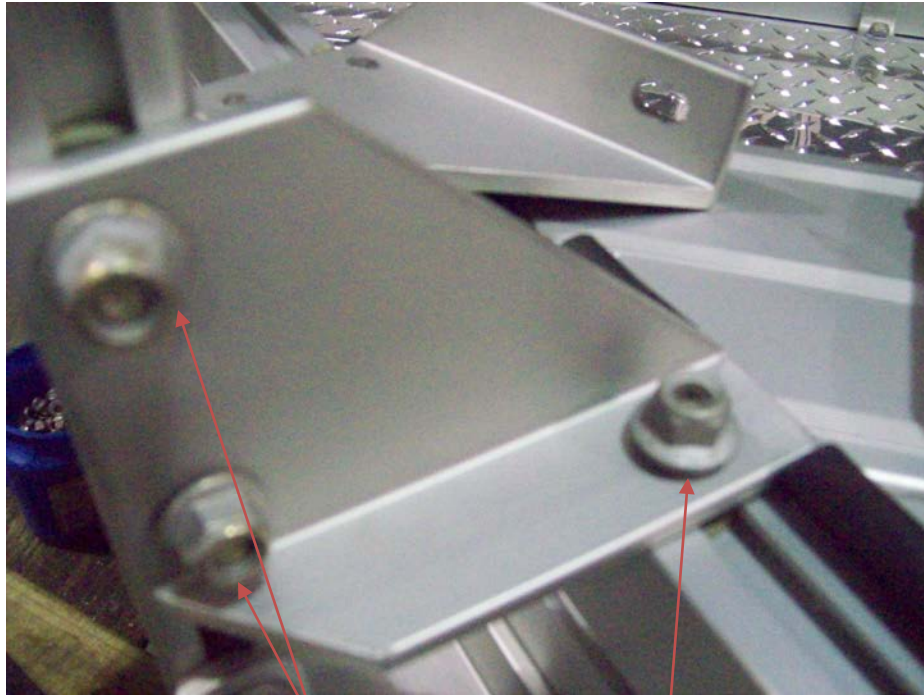
Slide angle bracket down over the T-bolt on the diagonal rail. Hold bracket down on the rubber strip and trim as shown.



Slide angle bracket out of the way. Finish removing the cut section of the rubber strip.



The rubber strip should look like this when finished.



Small flange nuts

large flange nut



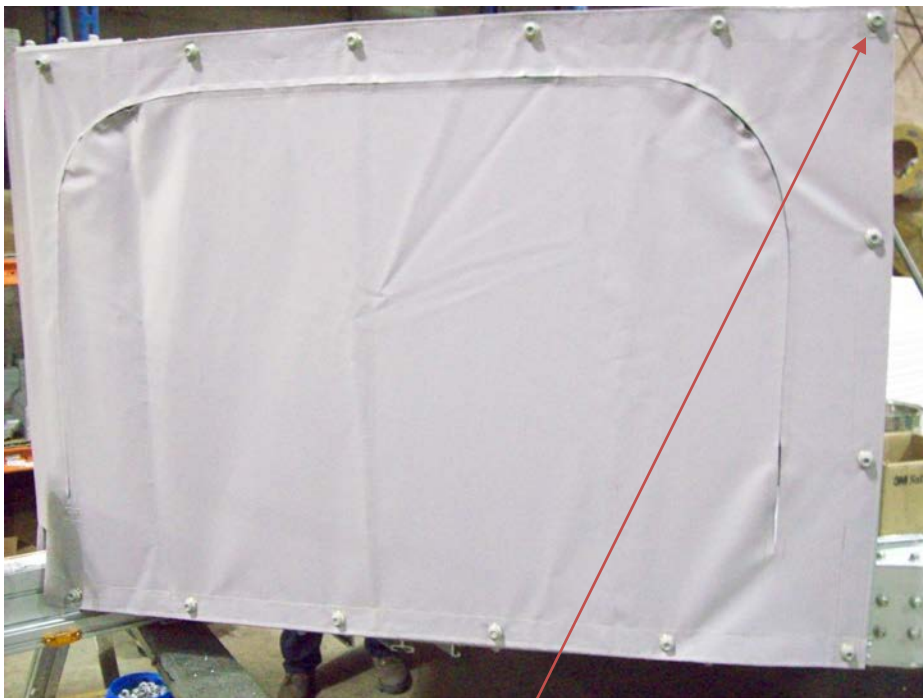
Install nuts as shown on the angle brackets. Once all angle brackets are in position tighten the nuts. Your angle brackets should look this when finished.



Install six T-bolts on the top and bottom of the frame as shown. Repeat this process for the other side.



Install the shield starting at the top outside corner. Insert T-bolts through brass hole and use large flange nuts to secure the shield.



Start here

Align T-bolts with holes in the shield as shown. Install nuts on both sides of the shield but do not tighten yet. Start in the upper outside corner and tighten nuts, keep pulling shield to keep it tight while working your way to the other side.

Finished front shield



KJM 2/3/12