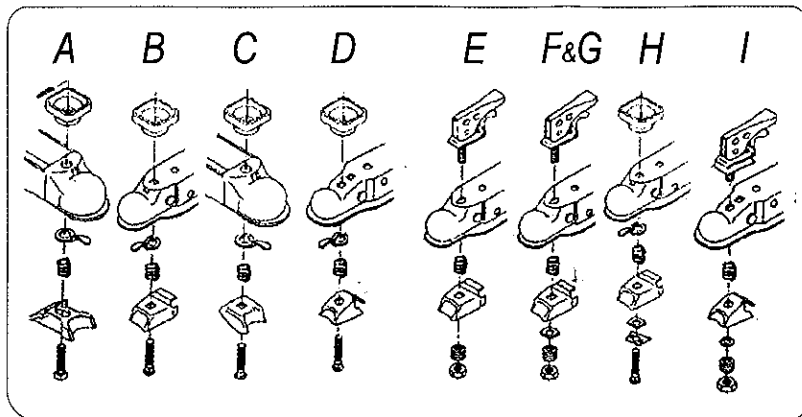


COUPLER REPAIR KITS

KIT NO.	DESCRIPTION	BALL DIA.	ILLUSTRATION
52-0801	Kit for 306, B-6, 308, B-8 Couplers	2"2-1/8"	A
54-0801	Kit for 1-500, H-Series Couplers	1 7/8"	B
56-0801	Kit for 107, 108, 07 & 08 Couplers	1 7/8"	C
61-0801	Kit for 34-308 Couplers	2"	D
62-0801	Kit for 34-318 Couplers	2"	D
58-0801	Kit for 11 and 1 series Fas-Lok Couplers	1 7/8"	E
59-0801	Kit for 22 and 2 series Fas-Lok Couplers	2"	F
60-0801	Kit for 34-300, 33-305 Couplers	2"	G
65-0801	Kit for 22 series Handwheel Couplers	2"	H
63-0801	Kit for 34-600 Couplers	2"	I

FOLLOW COMPONENT ASSEMBLY SEQUENCE SHOWN BELOW.

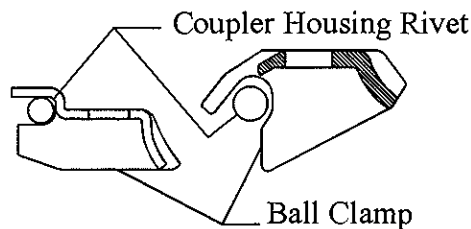


⚠ DANGER ⚠ If housing is deformed, replace complete coupler.
Use only genuine Fulton repair kits.

⚠ DANGER ⚠ When assembling the coupler make sure the ball clamp is located properly onto the housing rivet as shown below for your style of coupler.

ADJUSTMENT METHOD FOR FAS-LOK COUPLERS:

With the assembled coupler clamped onto the correct size ball. Turn the locknut down just until the spring under the locknut is fully compressed. Then back the locknut off to one turn or just enough to enable clamping or unclamping the coupler and ball.



CEQUENT™

TRAILER PRODUCTS

1050 Indianhead Dr., P.O. Box 8 Mosinee, WI 54455-0008
800/604-9466 715/693-1700 Fax 715/693-1799
www.cequentgroup.com
TR-Sales@cequentgroup.com

F1937 (F-9486) 7/04

FULTON®

Coupler use, Maintenance, Installation, & Service information
All FULTON Couplers
meet or exceed SAE J684 and VESC V5 specifications.

READ AND SAVE THESE INSTRUCTIONS

⚠ DANGER BEFORE TOWING ⚠

1. Check vehicle hitch, ball, and coupler for signs of wear or damage. Replace any parts that are worn or damaged before towing.
2. Know your trailer plus added load weight. Do not exceed lesser of coupler, vehicle, ball or trailer weight ratings. Use only the ball diameter indicated on your coupler. Use of any other ball diameter will create an extremely dangerous condition which can result in separation of the coupler and ball or ball failure.
3. Be sure the coupler is secured to the hitch ball and the lock lever or hand wheel is down tight and locked. Clamp hand wheel couplers hand tight only. Assure that the ball clamp is properly nested under the ball and not sitting on top of the ball. Recheck tightness again after towing about 50 miles.
4. Check that trailer safety chains are properly connected.
5. Check that all trailer lighting is hooked up and working correctly.

MAINTENANCE

Recommended Maintenance

1. Smear ball socket and clamp face with chassis grease. Periodically oil pivot points and sliding surfaces of coupler with SAE 30 wt. motor oil.
2. When parking or storing your trailer, keep the coupler off the ground so dirt will not build up in the ball socket.

INSTALLATION INSTRUCTIONS

INSTALLATION INSTRUCTIONS FOR CLASS 1 COUPLER.

WELD ON INSTRUCTIONS:

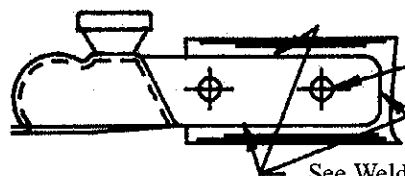
Use 1/8" fillet weld as shown below. Use Number E6011 A.W.S. welding rod (AC RO DCAP) 1/8" dia.

Set machine amps at 105/115 with 18/22 volts.

BOLT ON INSTRUCTIONS:

1. Assure coupler internal stop is butted against end of trailer tongue for maximum overlap.
2. The preferred method is to use (4) 3/8" bolts through side holes and torqued to 15/20 FT. LBS. (See Illustration Below) An alternate method is to use (2) 3/8" grade 5 through bolts & locknuts providing they can be torqued to at least 20 FT. LBS. without excessive deformation of the coupler or the trailer tongue.

CAUTION After installation is complete. Check that the coupler operation has not been impaired in any way.



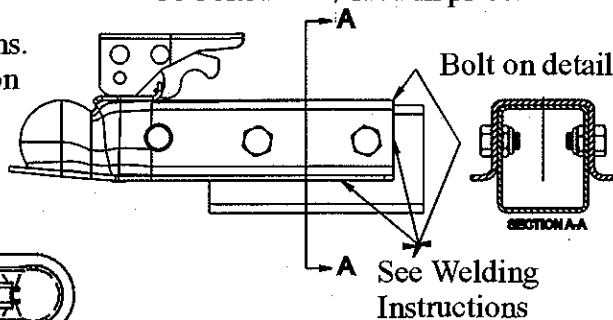
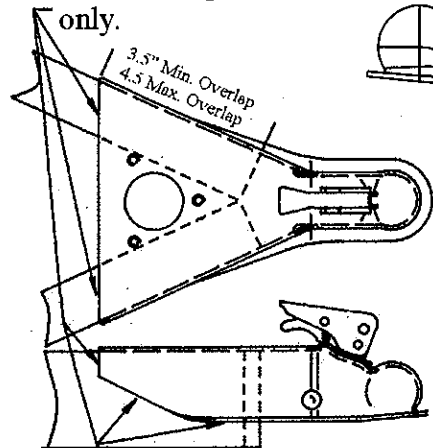
If bolting on, Assure proper bolt torque is possible without collapsing pipe. If not, Follow 4 bolt mounting instructions.

See Welding Instructions.

108 coupler for 2" pipe

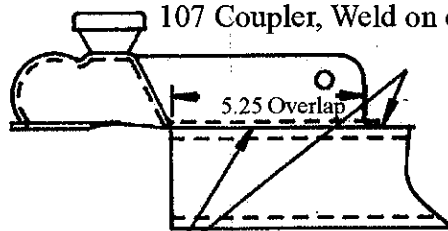
11, 13, & 107 Series couplers can be bolted or welded in place.

See Welding Instructions.
11 305 Coupler, Weld on only.



See Welding Instructions

107 Coupler, Weld on only.



See Welding Instructions

INSTALLATION INSTRUCTIONS FOR CLASS 2, CLASS 3, AND 34600/34318 CLASS 4 COUPLERS.

WELD ON INSTRUCTIONS:

Use 1/8" fillet weld as shown below. Use Number E6011 A.W.S. welding rod (AC RO DCAP) 1/8" dia.

Set machine amps at 105/115 with 18/22 volts.

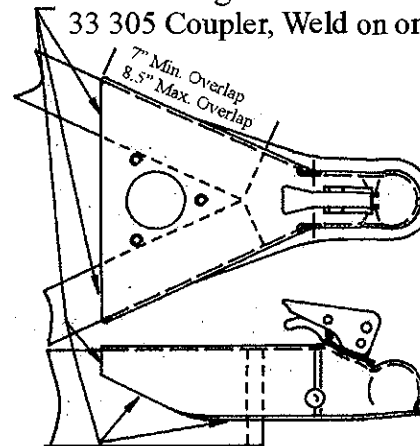
BOLT ON INSTRUCTIONS:

1. Assure coupler internal stop is butted against end of trailer tongue for maximum overlap.
2. The preferred method is to use (4) 1/2" bolts through side holes and torqued to 30/35 FT. LBS. (See Illustration Below) An alternate method is to use (2) 1/2" grade 5 through bolts & locknuts providing they can be torqued to at least 35 FT. LBS. without excessive deformation of the coupler or the trailer tongue.

CAUTION After installation is complete. Check that the coupler operation has not been impaired in any way.

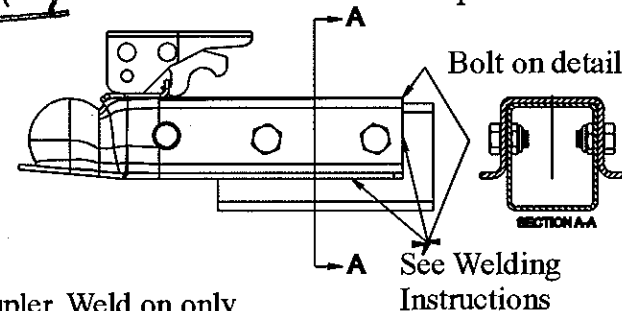
See Welding Instructions.

33 305 Coupler, Weld on only.



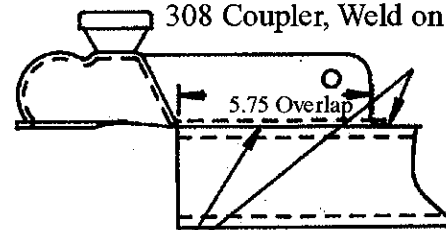
Typical coupler illustrations shown

22, 23, & 34 Series couplers can be bolted or welded in place.



See Welding Instructions

308 Coupler, Weld on only.



See Welding Instructions

CEQUENT™
TRAILER PRODUCTS

1050 Indianhead Dr., P.O. Box 8 Mosinee, WI 54455-0008
800/604-9466 715/693-1700 Fax 715/693-1799
www.cequentgroup.com
TR-Sales@cequentgroup.com