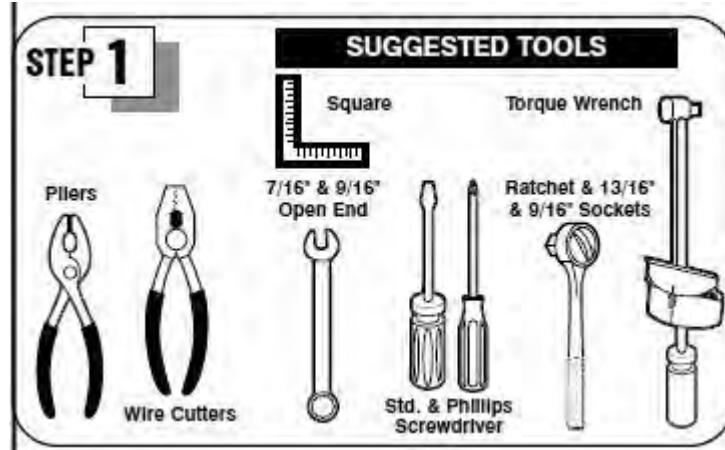


# UT-1200-16-04



## ASSEMBLY REQUIREMENTS

**\*Torque all T-bolt nuts to 35-40 foot pounds.**

**\*Check all lights before towing.**

**\*Tire pressure not to exceed recommendation on serial tag.**

**\*Re-torque wheel nuts after first 25 miles to 80 ft pounds and periodically thereafter.**

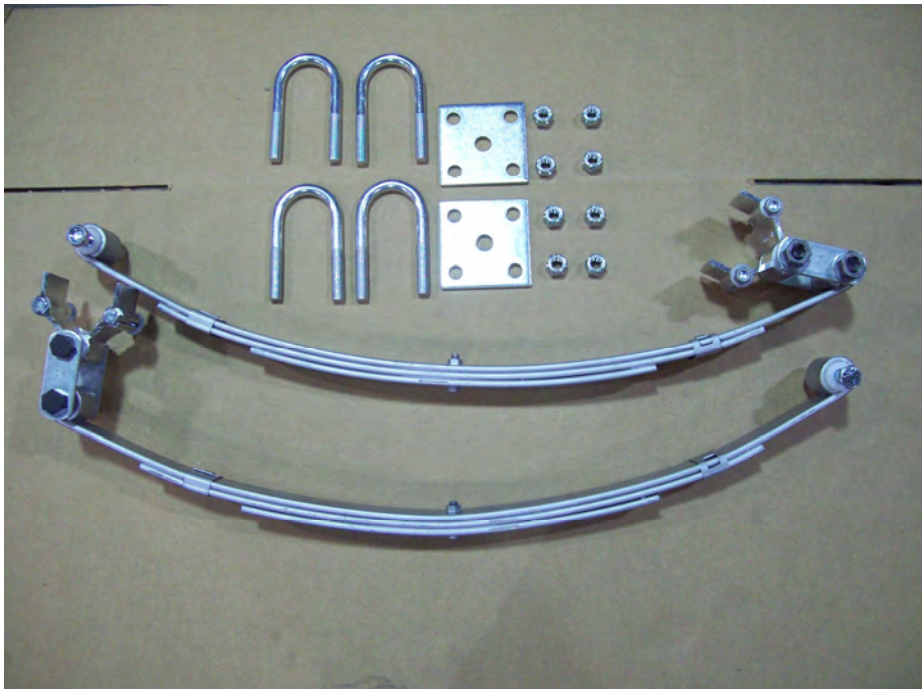
**Failure to follow the assembly instructions could result in serious injury or death.**

**Incorrect assembly or modifications to your trailer will void any specific or implied warranty.**

**For questions or assistance assembling your trailer call 800-282-5042.**



Unwrap the frame and place on saw horses as shown.

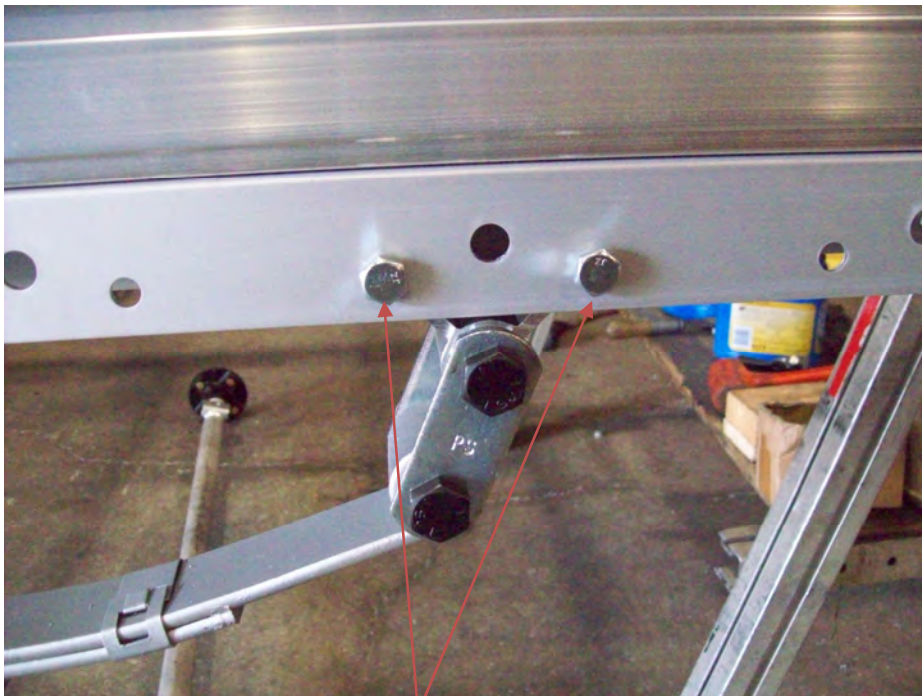


Locate the (2) spring assemblies, (4) U-bolts, (2) plates, and (8) nuts.



**Front of sub rail clip**

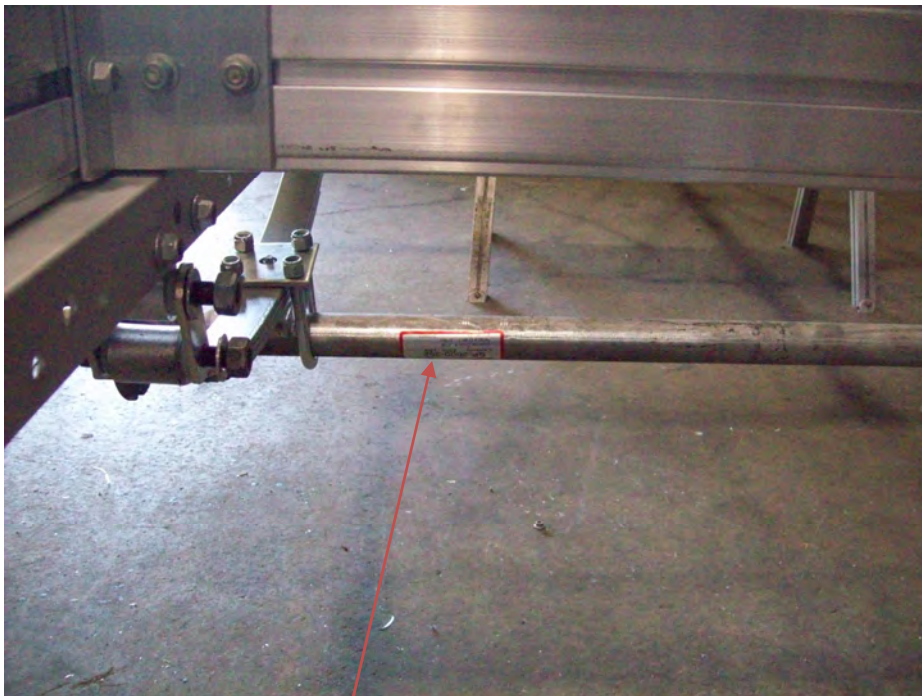
Install the front bolt from the leaf spring in the center hole of the front sub rail clip as shown.



**Tighten these nuts**

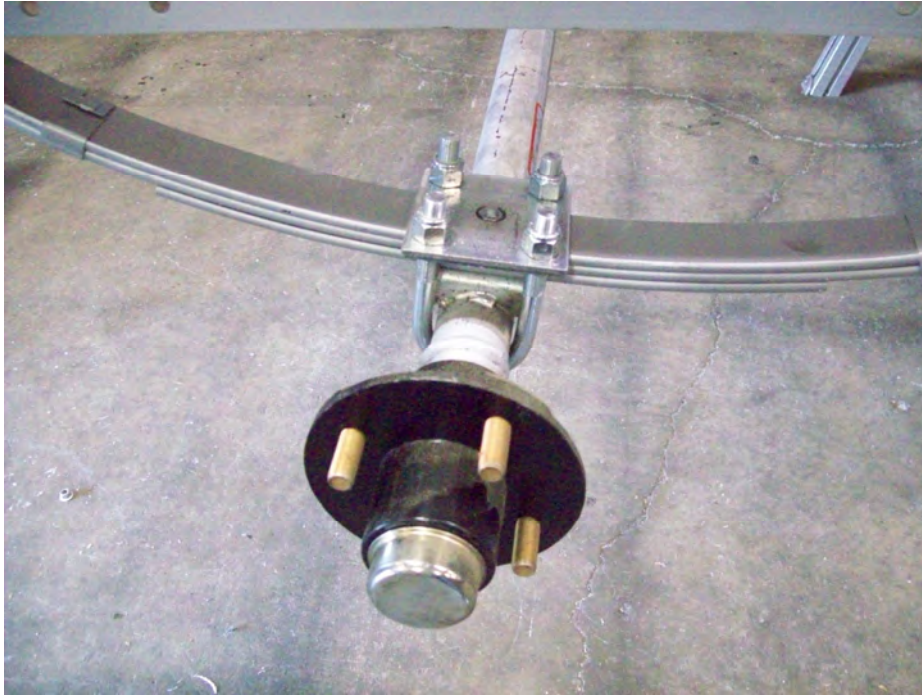
Install shackle holder assembly bolts in the two center outer holes of the rear sub rail clip. Tighten the shackle holder nuts only. Do not tighten shackle nuts at this point.





**Serial plate**

Install the axle making sure the locating studs on the springs are in the holes on the axle's spring seat. Face the axle's serial plate toward the rear of the trailer to protect it from debris. Install the axle with the U-bolts, plates and nuts.

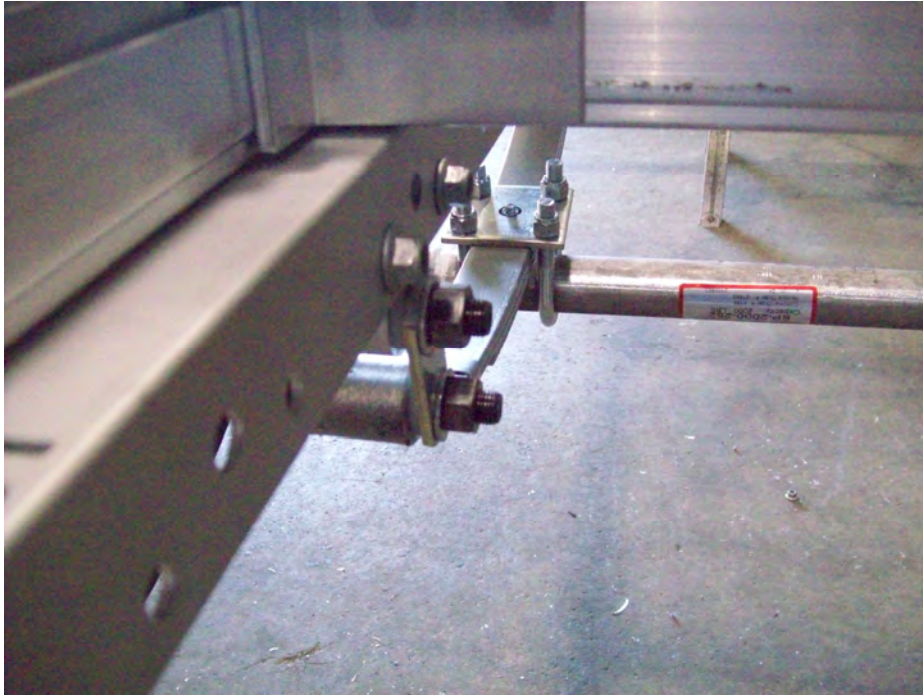


Once the axle is in position tighten nuts evenly on the U-bolts.

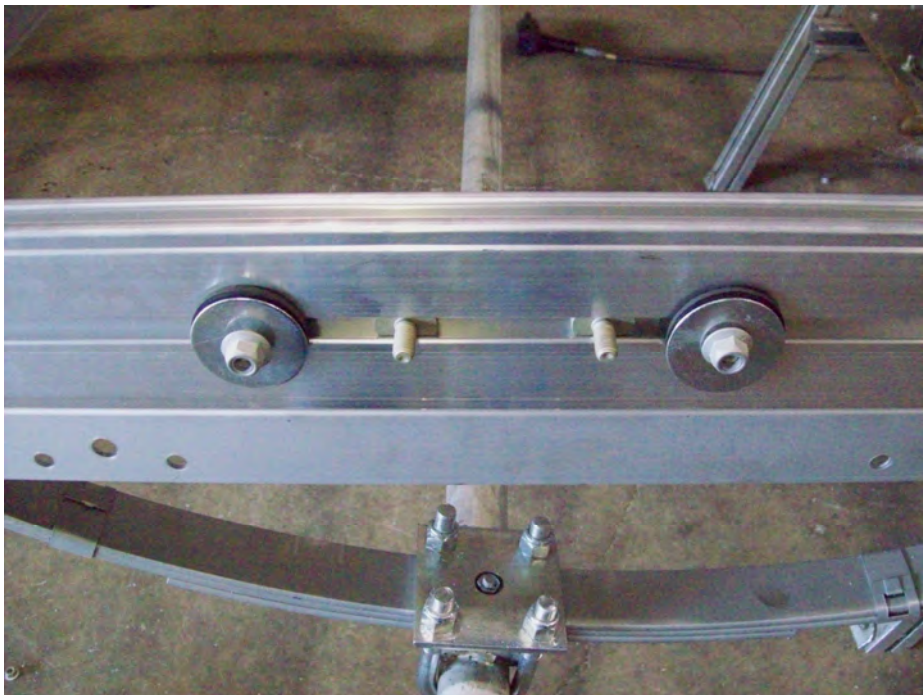


Once the axle is in position, go back and tighten the nuts on the leaf springs.

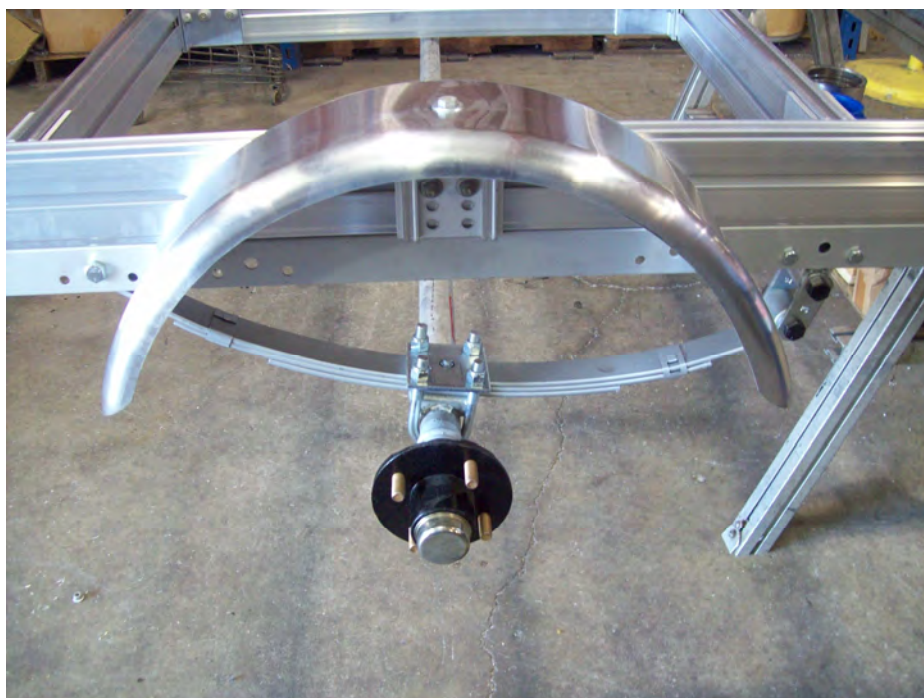




Do not over tighten the shackle nuts as this will not allow the suspension to move properly.

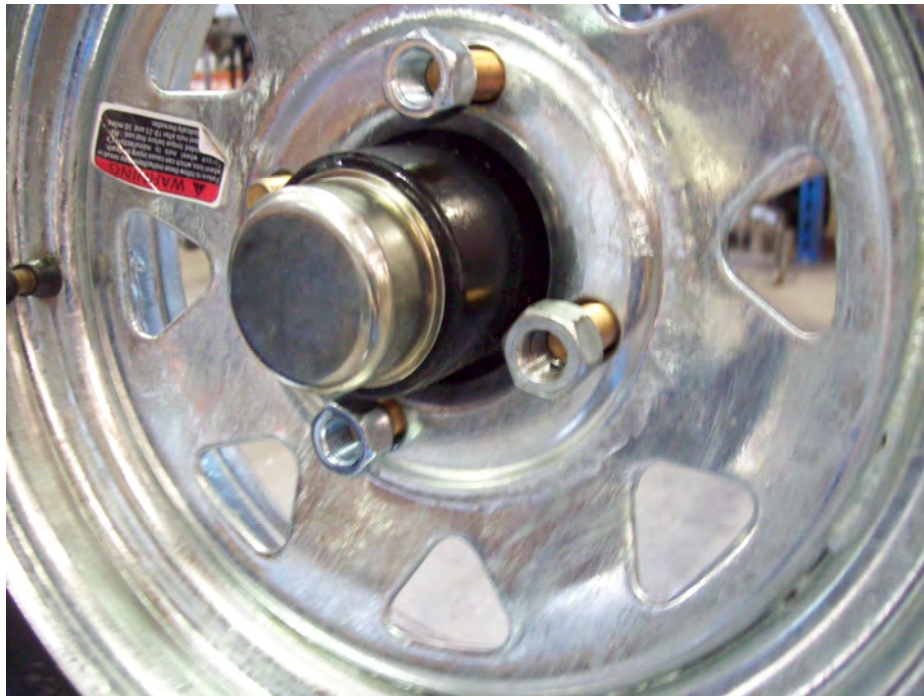


On the side rail of the trailer, locate the T-bolts and washers to mount the fenders.



Install the fender bracket over the two center T-bolts. Slide the T-bolts with washers out against the edge of the fender as shown. Once axle is installed go back and center the fender, then tighten all nuts.



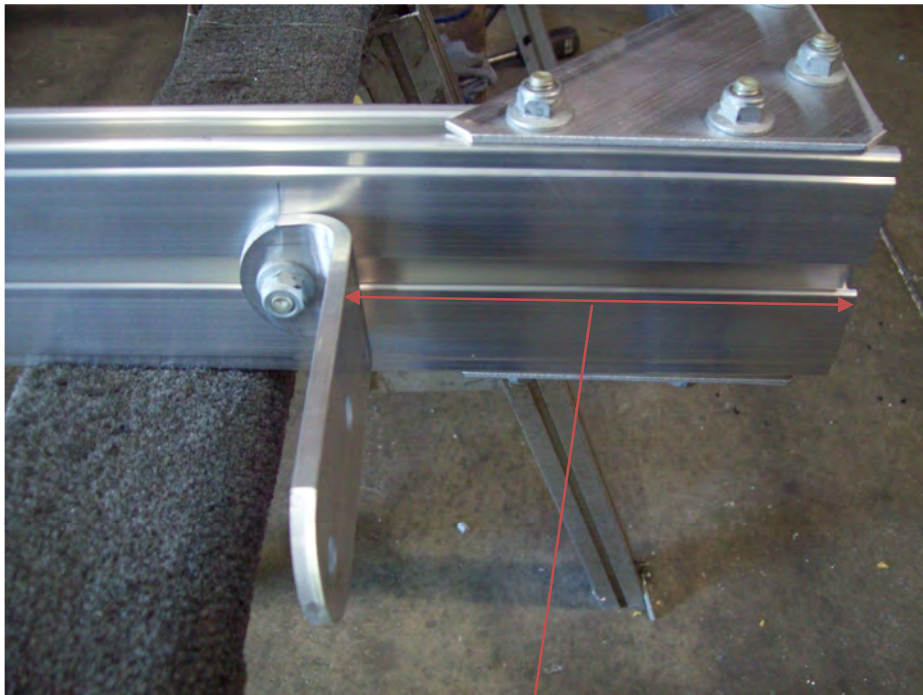


Install the wheels with the valve stems facing out. Install the lug nuts with the tapered side facing the wheel then tighten nuts.



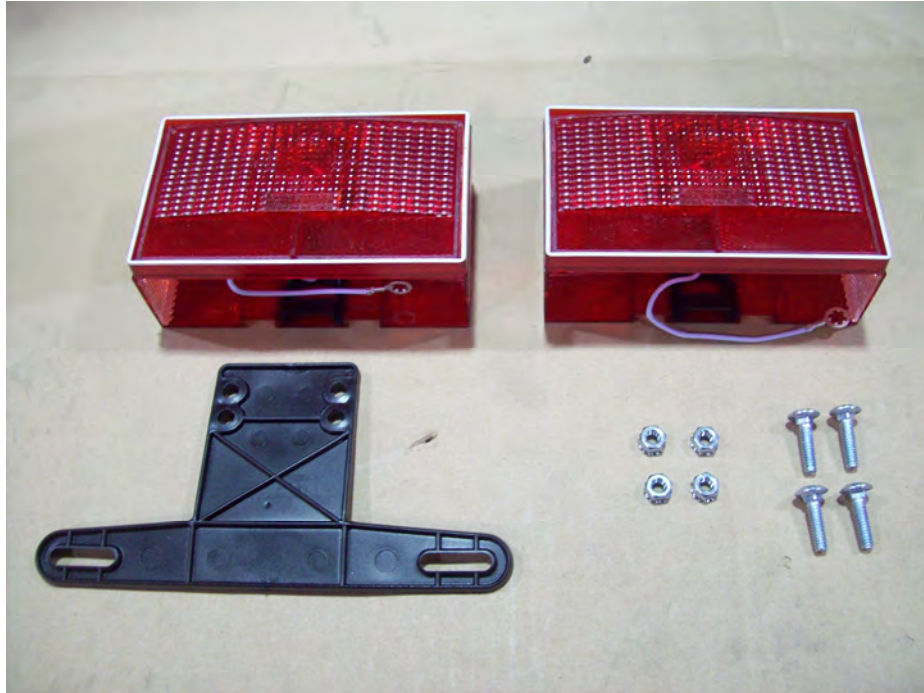


Locate the two tail light brackets.



8 inches from rear

Install tail light brackets on T-bolts that are already on the side rail. Position tail lights 8 inches from the rear cross member as shown.



Locate the two tail lights, license plate bracket, 4 nuts, and 4 carriage bolts.



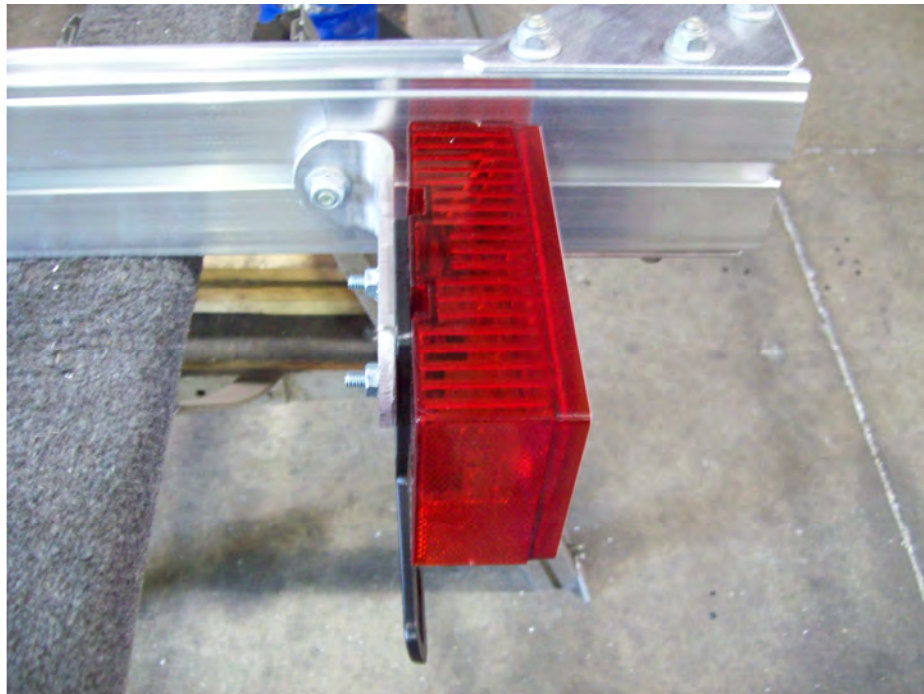
The light with the yellow wires is for the left (driver's side) of the trailer. Slide the carriage bolts into the slots in the back of the tail lights.



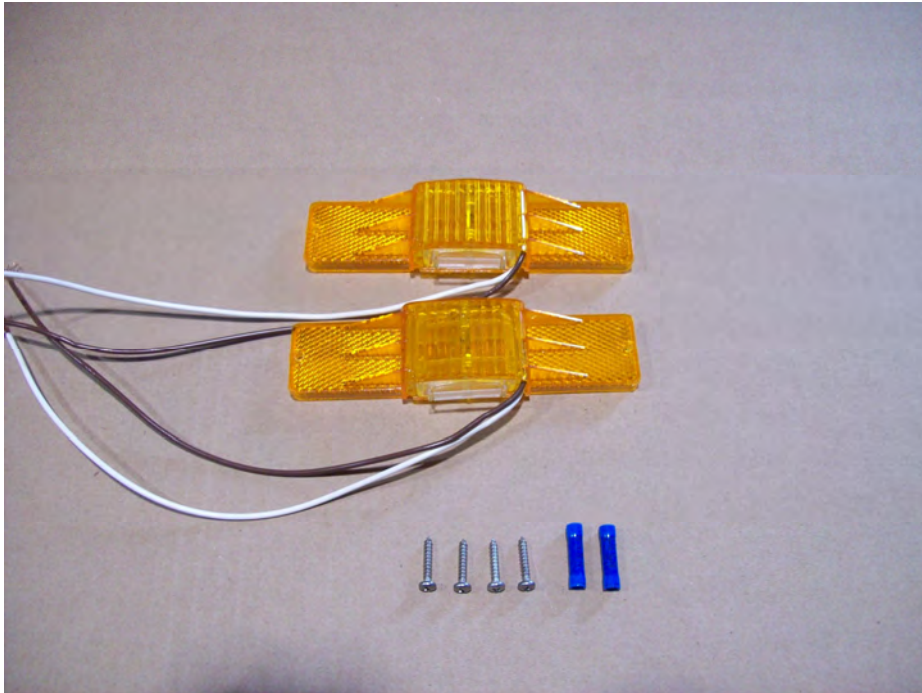


Lights shown up side down

Mount the license plate bracket to the driver side tail light.



Install the left tail light with the license plate holder between the light and the bracket. Then repeat the process for the other side. Then tighten the nuts on tail lights.



Locate two amber running lights, four small Philips screws, and two butt connectors.

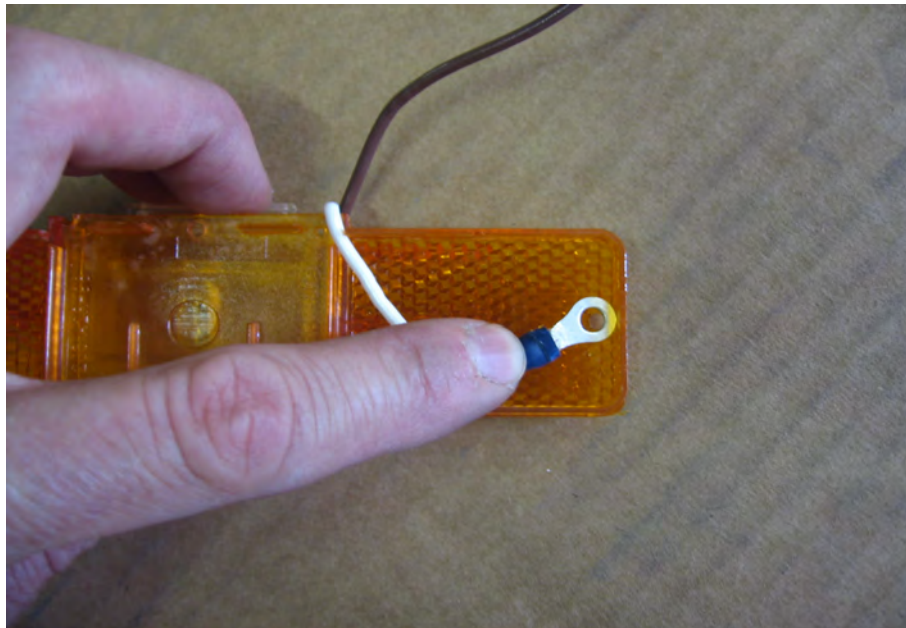


Cut approximately 8 ½" off of the white wires on both running lights.

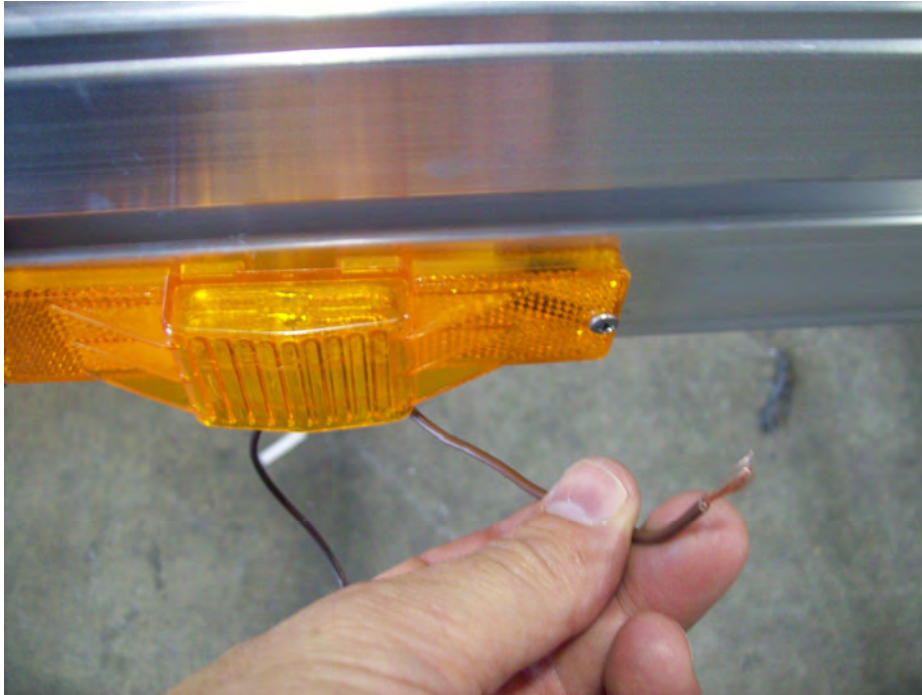




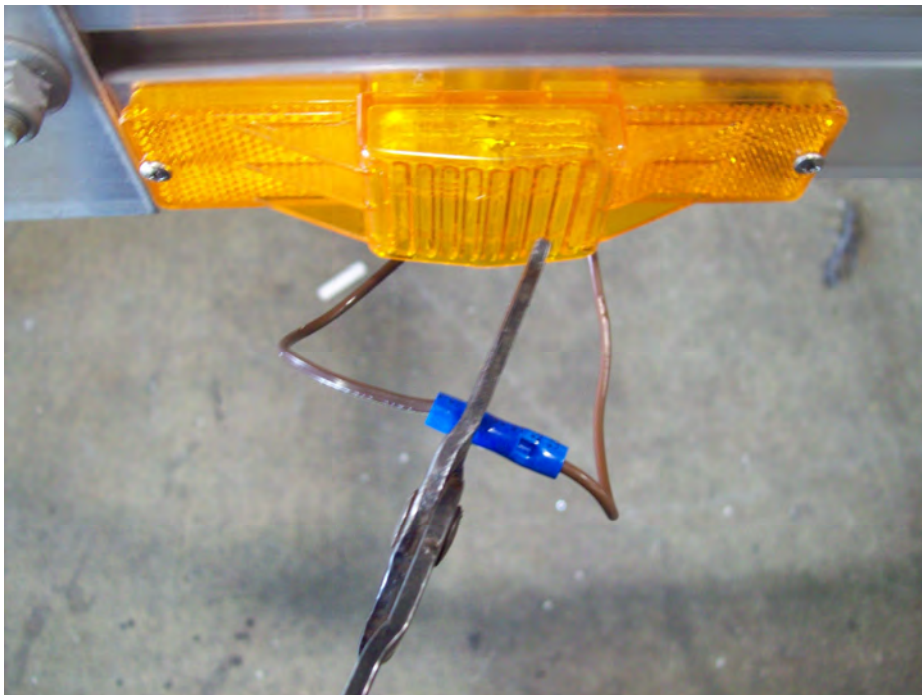
Strip 1/4" of insulation from the wire.



Align the ring terminals with the screw hole nearest the wire on the back of the running light. Make sure the wire is routed through the gap on the back of the light so it does not become pinched, when the light is installed.

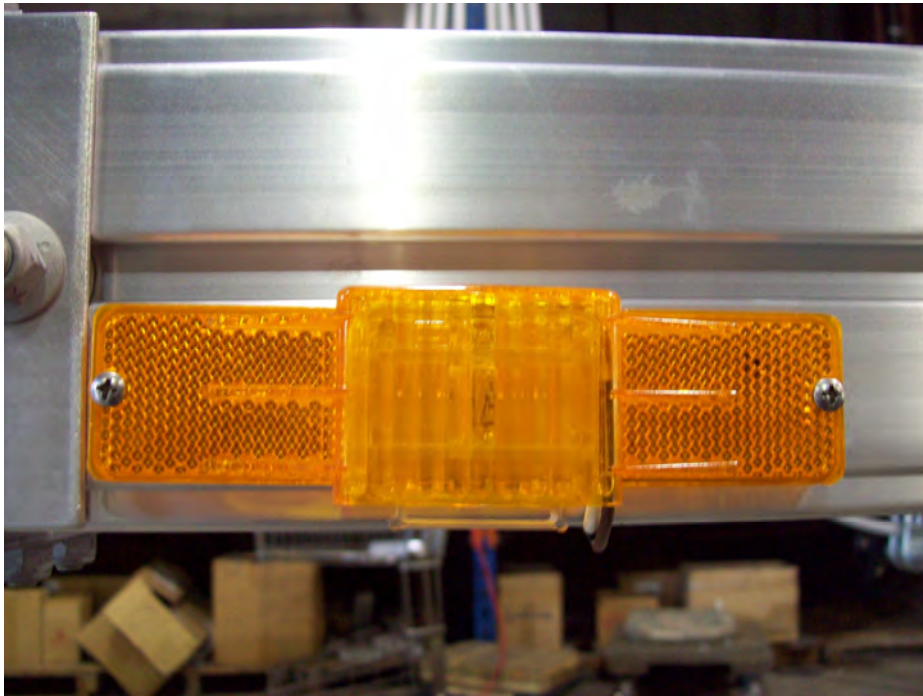
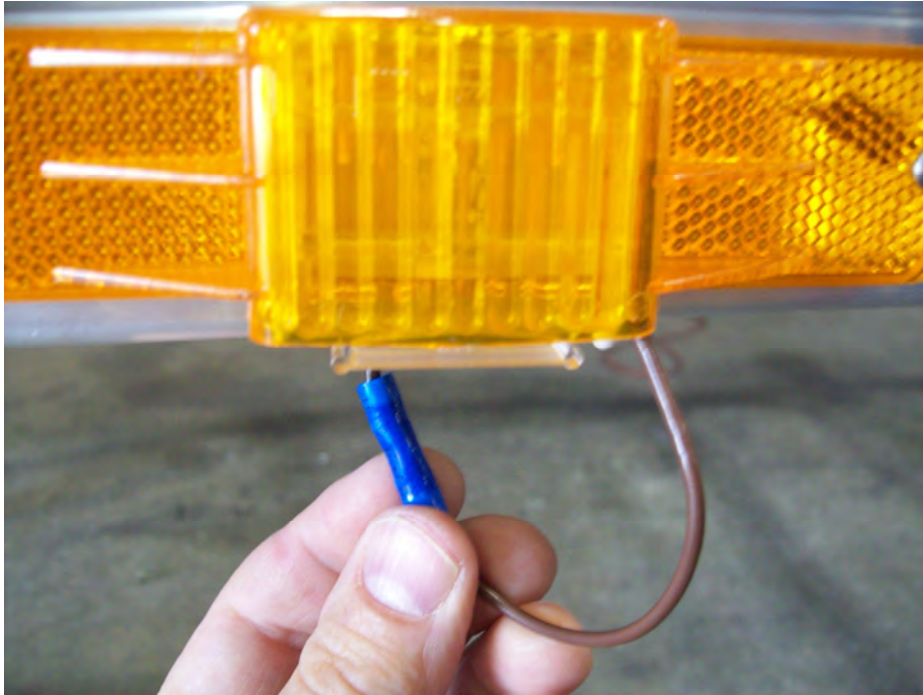


Locate the two drilled holes at the front of the side rail and install the light. Then strip away about a 1/4" of casing off the brown wire from the light.

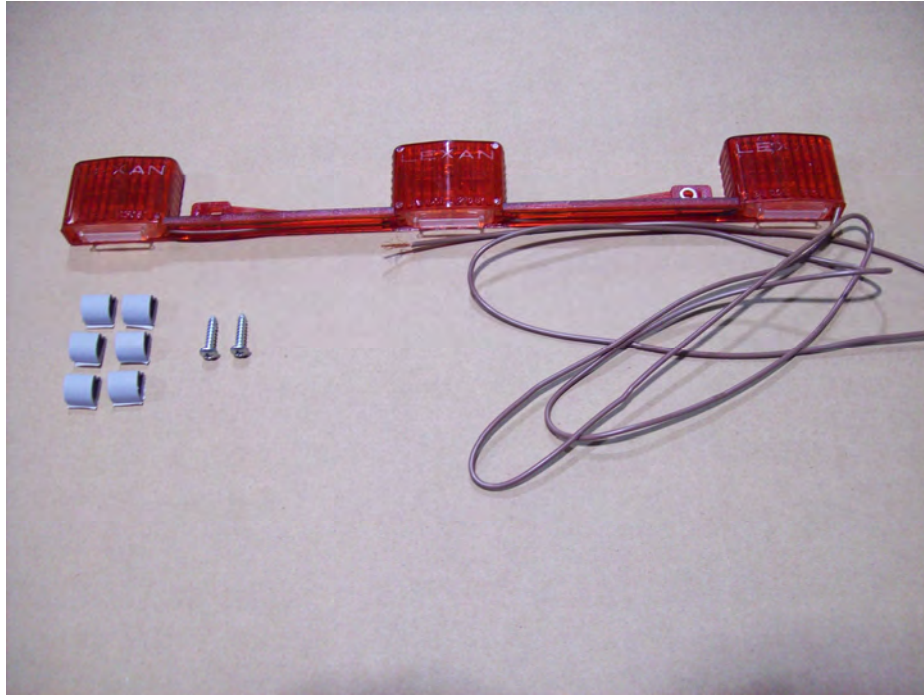


Pull the brown wire down from the underside of the frame. Strip 1/4" of casing off this wire. Crimp butt connector to both wires.

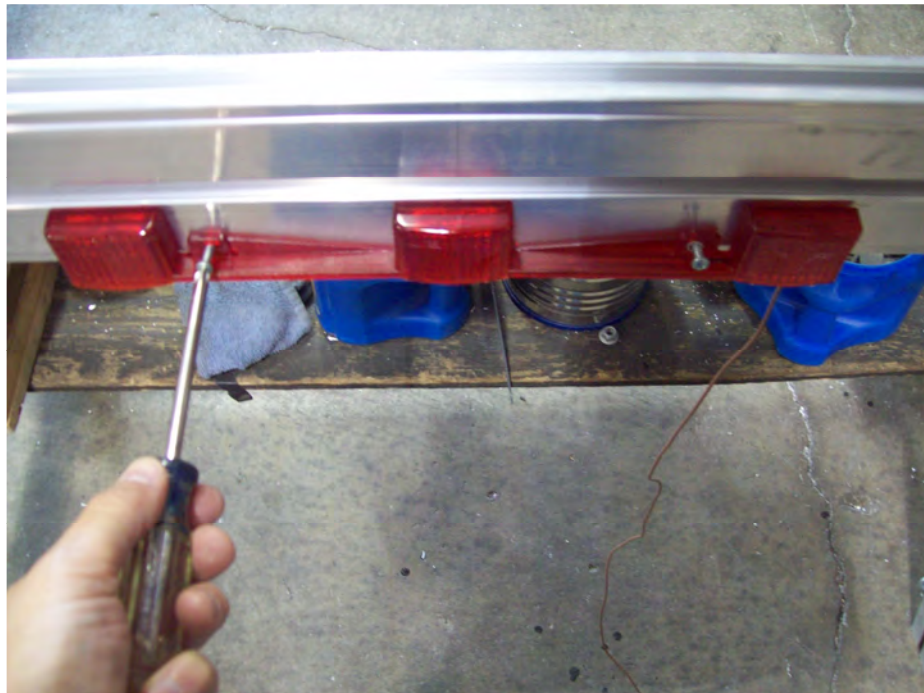




Insert the wire and butt connector into the hole on the underside of the rail. The wire should not be visible once inserted into the frame.



Locate the three light bar, adhesive clips, and two large Philips screws.



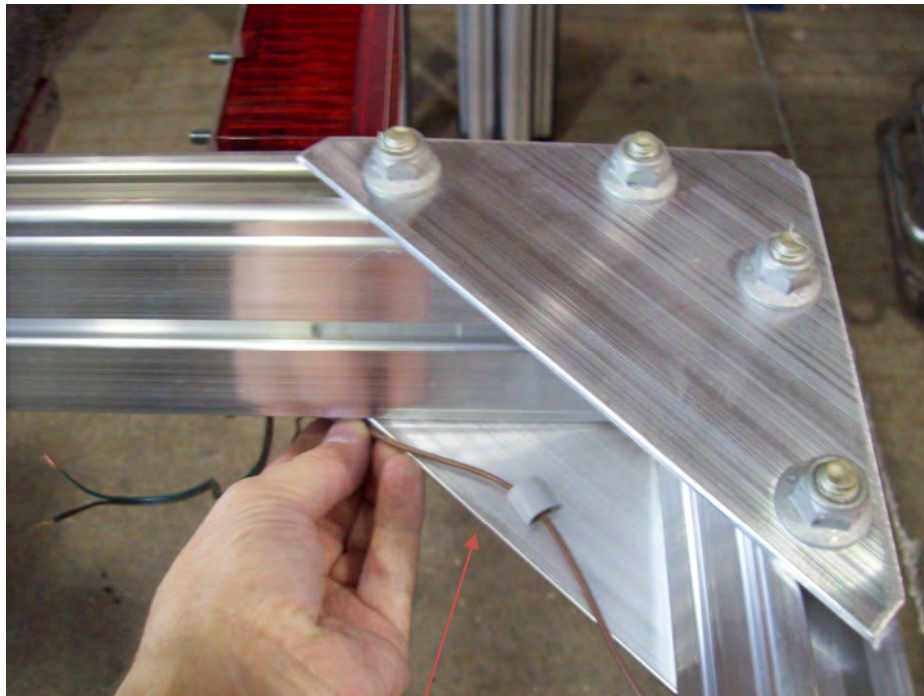
Install the three light bar on the rear cross member in the center where the holes are drilled.



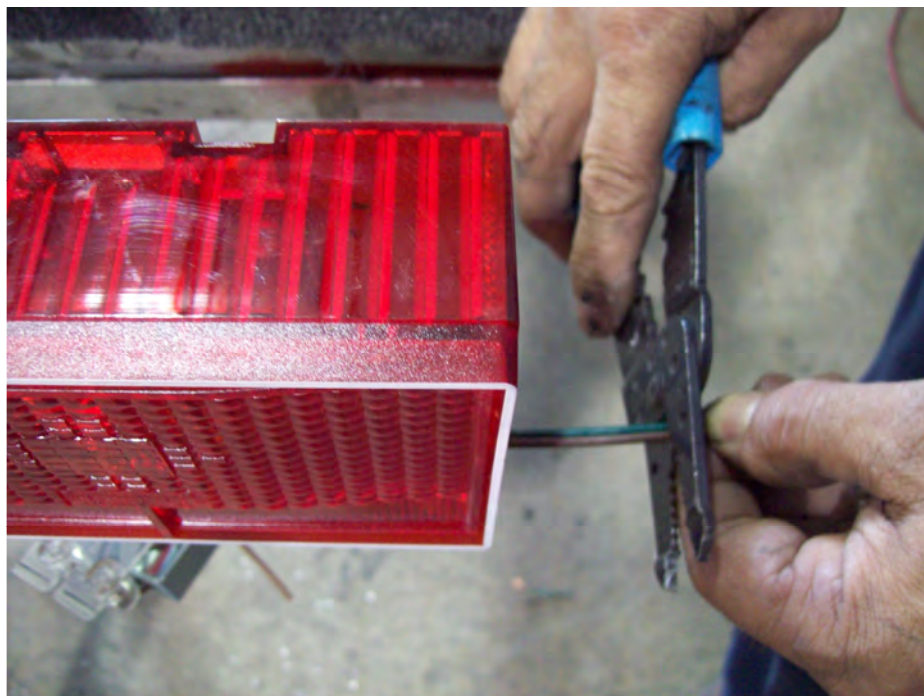


**Adhesive clips**

Take the wire from the three light bar and run it across to the right side tail light. Tuck the brown wire up into the underside of the cross member and install adhesive clips as shown.

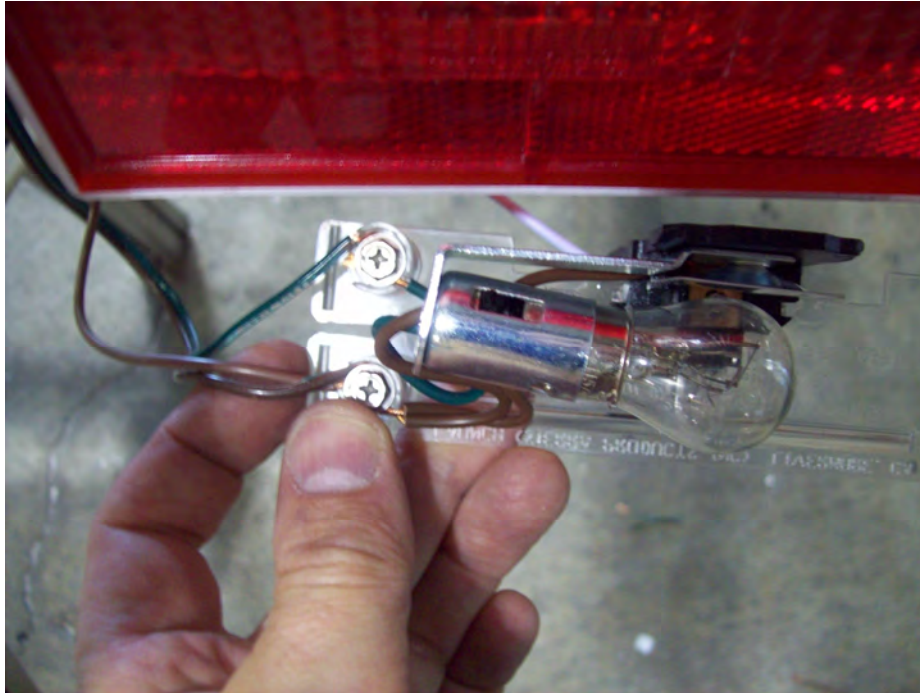


Adhesive clip

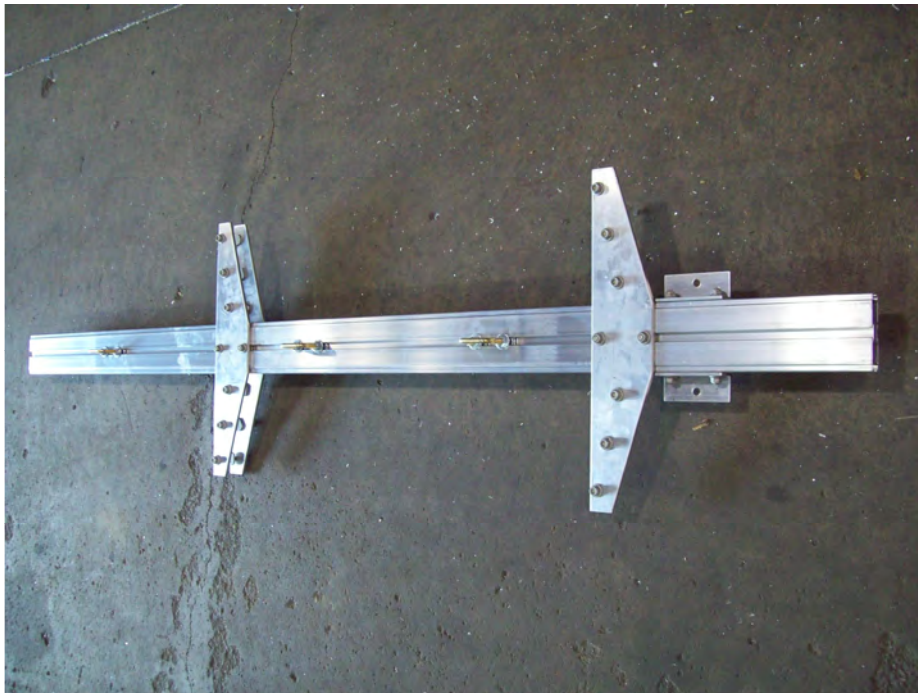


Trim off excess wire from harness and three light bar before installing.





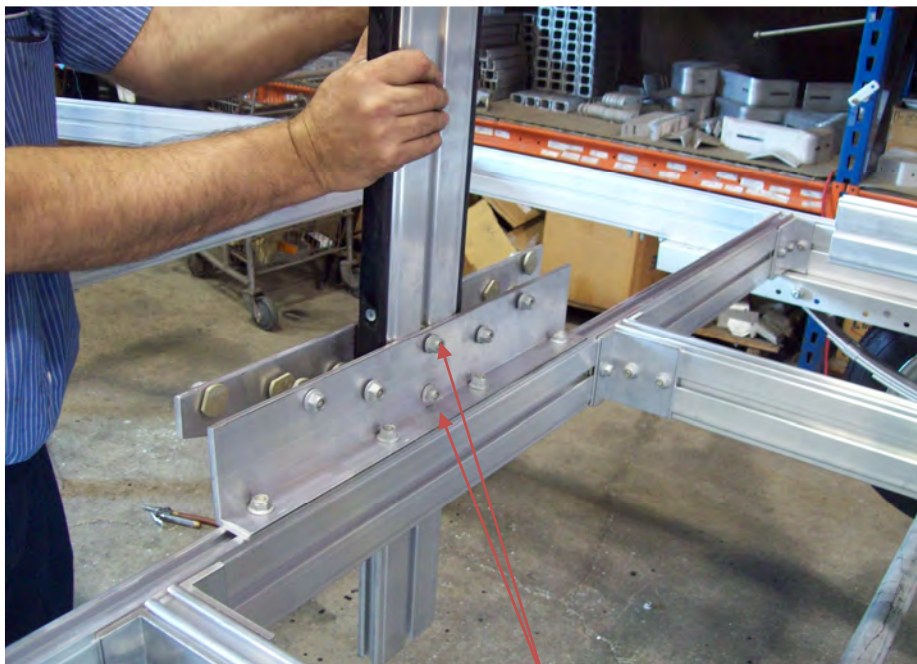
Remove the tail light assembly from the housing. Loosen the wire retaining screws and install the color matching wires from the wire harness onto the corresponding retaining screws. Reinstall into the housing. Repeat process for the other side.



Locate the two vertical posts for the V bars.



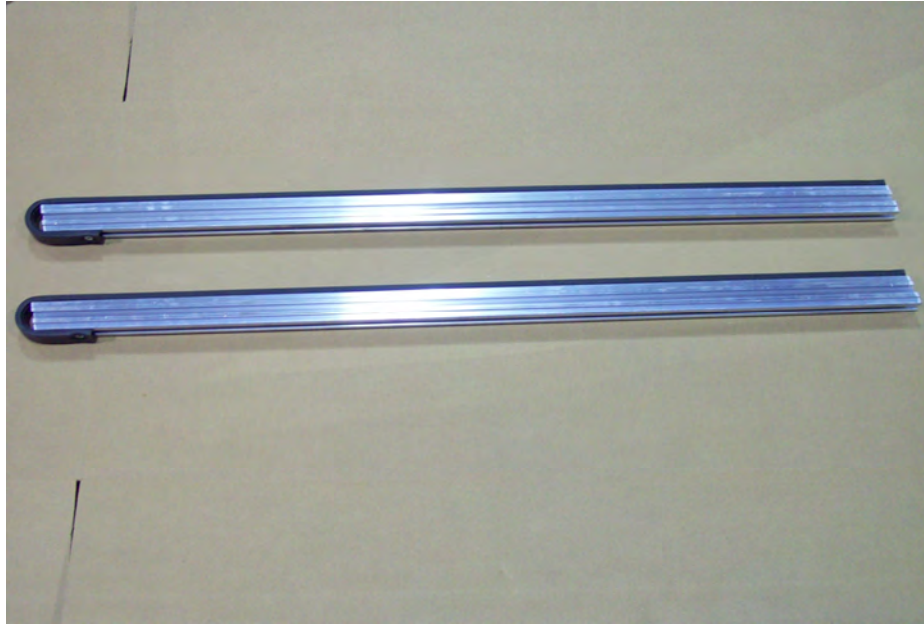
Slide two T-bolts from each side of the cross member to center. Make sure that there are two T-bolts on each side of the post, these will be used later. Install post with angle brackets onto the two T-bolts in the center. Install nuts to hold in position.



**Two T-bolts**

Install the two T-bolts on the back side of the post into the bracket on the cross member as shown. Install nuts, and then tighten the front and back. Repeat the process for the rear post.





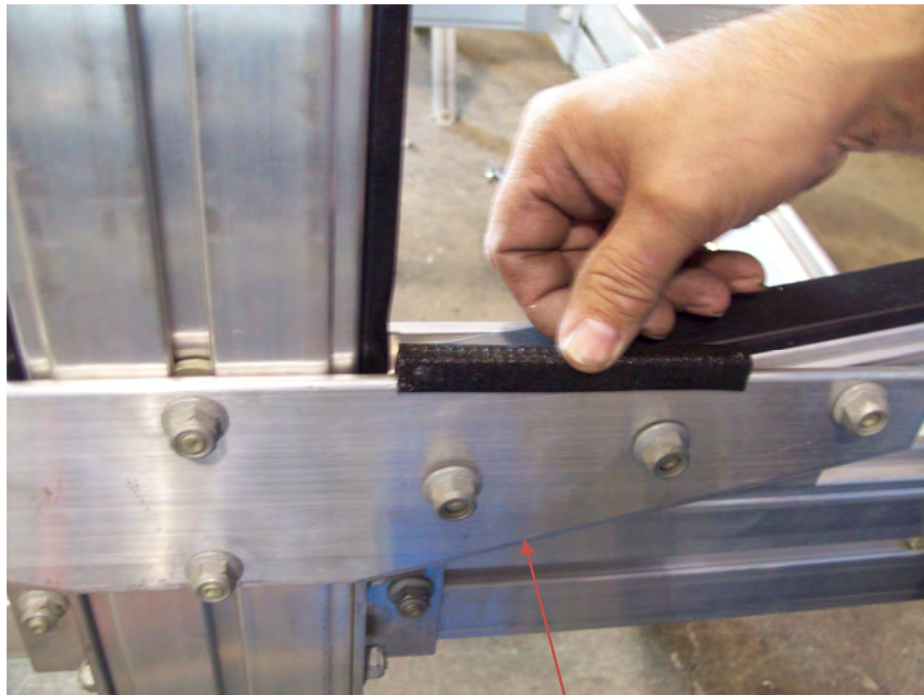
Locate the (8) kayak arm assemblies as shown.



Insert the arm into the T-bolts on the brackets. T-bolts will need positioned to accommodate the arm as it is sliding in toward the post.



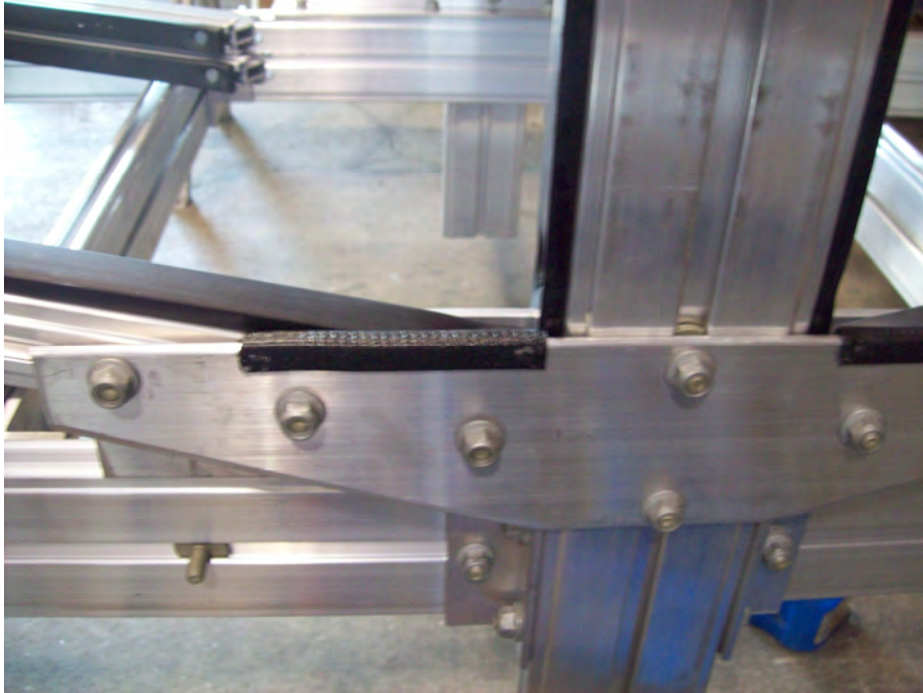
Locate 12 trim lock for the outside-arm mount plate.



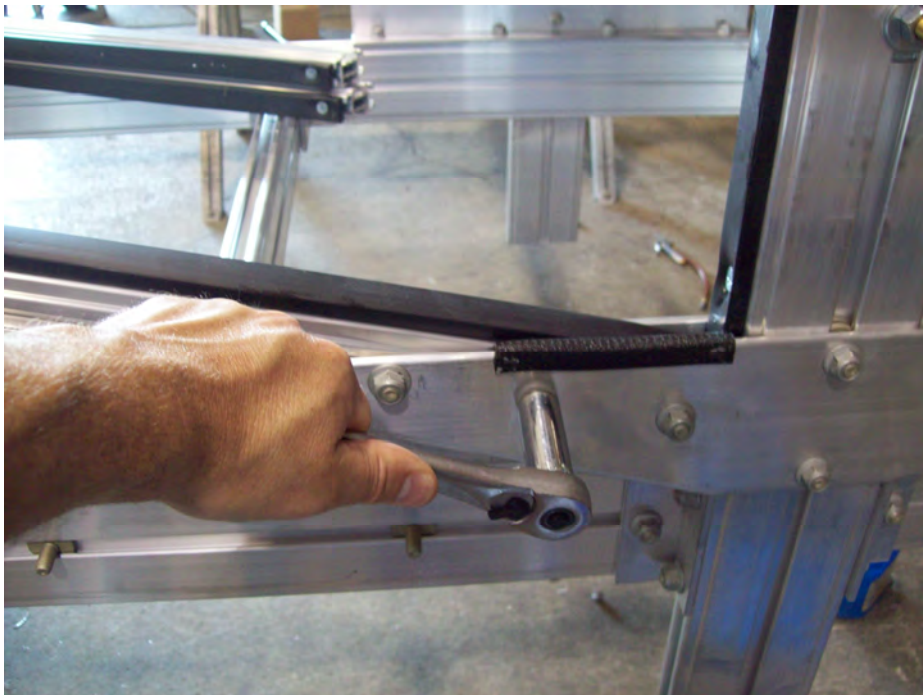
**Outside-arm plate**

Push the trim lock down on the outside-arm plate as shown. The trim lock will not be used on the lower back side of the arms. Repeat this process for all of the outside plates.

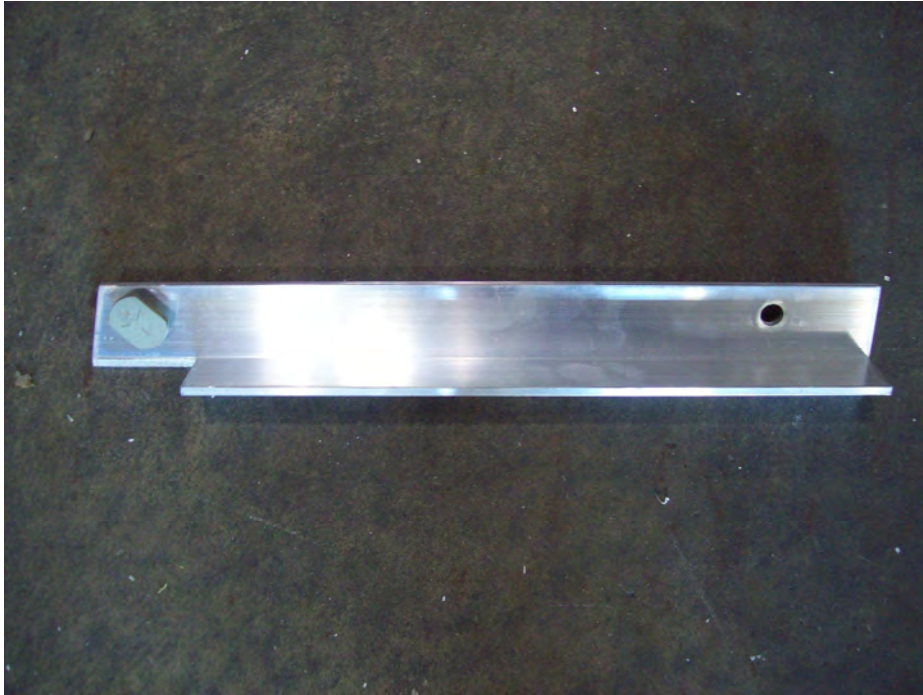




The trim lock will not be used on the lower back side of the arms. Repeat this process for all of the outside plates.



At this point tighten all nuts on arm assemblies.

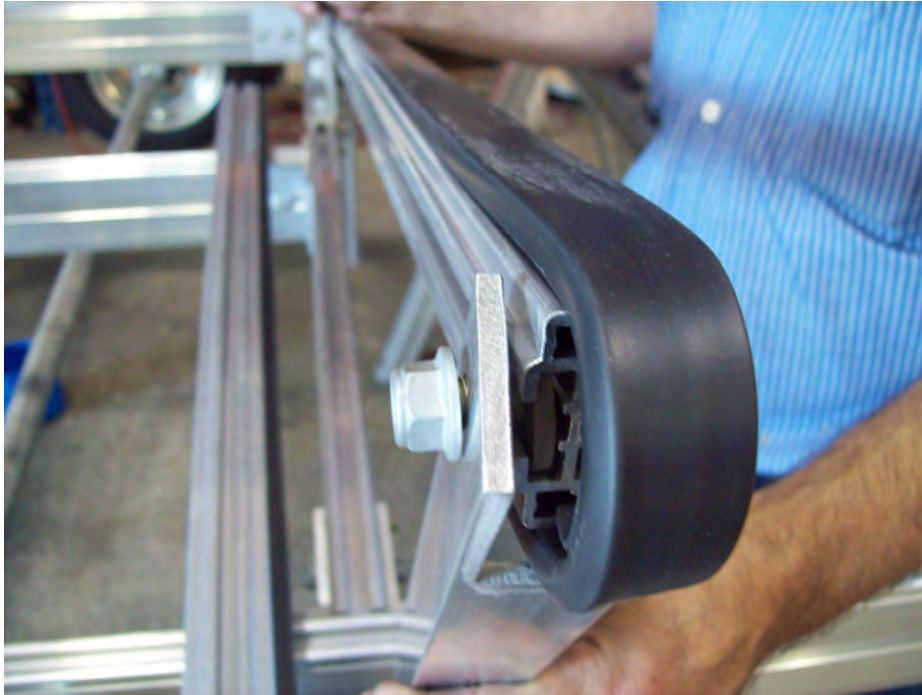


Locate four V bar support angle brackets.



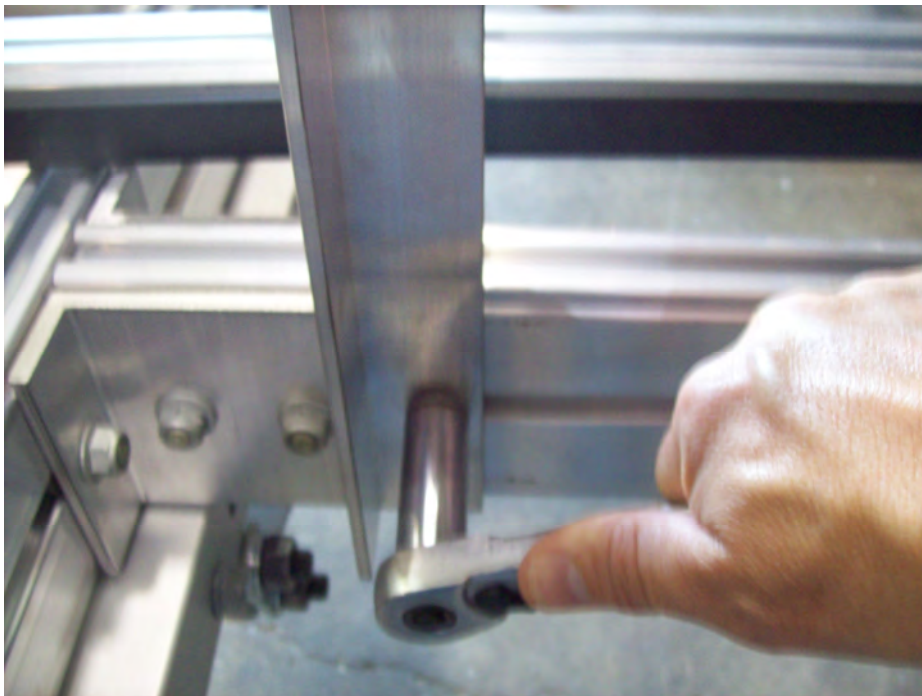
Locate the sixteen web strap clips for cross bars.





**Rear kayak arm shown**

Install the T-bolt from the support angle bracket into the front side of the arm assembly.



Slide the outer T-bolts in the cross member over to the corner angle bracket. Install support angle bracket over top of T-bolt. Support angle bracket should be flush with corner angle bracket. Tighten nut.



Tighten nut on arm assembly. Repeat this process for all four corners.



On each bottom arm assembly, insert a web strap clip facing out on each arm. Position the web strap clip in the center of the arm and tighten.

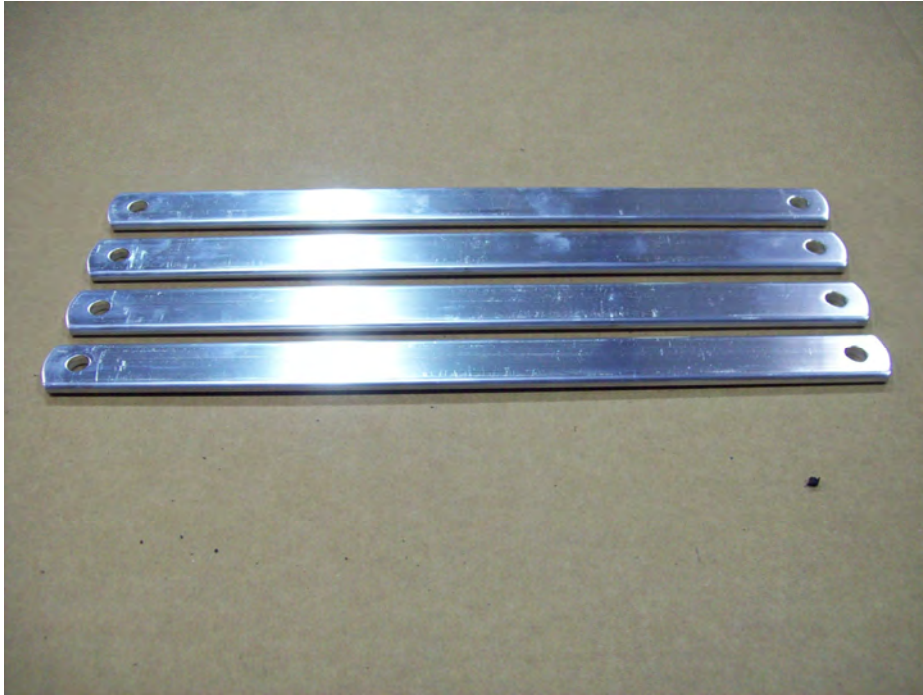




Install web strap clips at the end of each arm assembly as shown and tighten.



Repeat the process of installing the web strap clips for the top arm assemblies. Final adjustments to clips will be determined when boats are loaded on trailer.



Locate the four 15" diagonal braces.



Front side

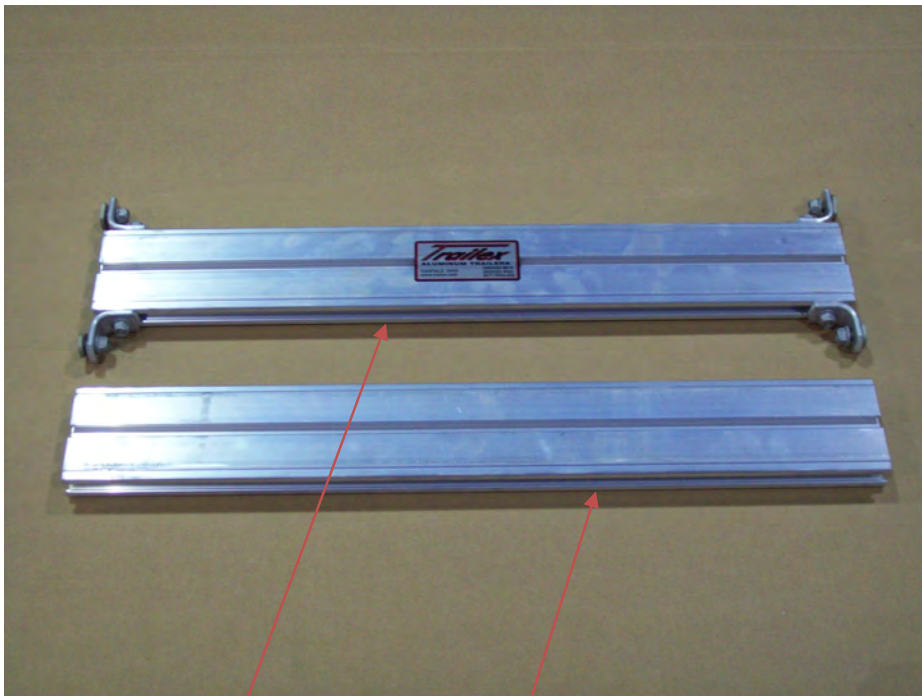
Attach diagonal braces to the T-bolts in the cross member on each side of the vertical plate.





**Back side shown**

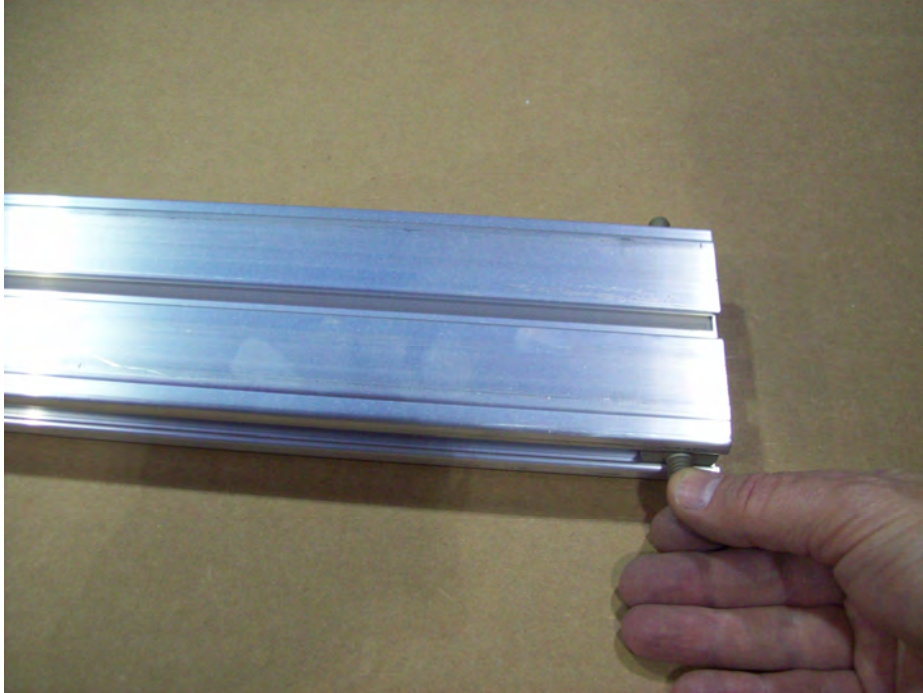
Install diagonal braces on the 1 1/8" T-bolt on the back side of the vertical post. Make final adjustments to braces and tighten nuts on the front and back side.



**Upper bar**

**Lower bar**

Locate the upper and lower horizontal support bars.



Remove the T-bolts from the angle brackets located halfway up on the back side of the vertical support. Install one T-bolt in each corner of the lower horizontal support.



Loosen the lower angle brackets and slide out of the way. Insert top T-bolts into the upper angle brackets as shown and install nuts. Reattach lower angle brackets to underside of the bar. Install nuts and tighten.

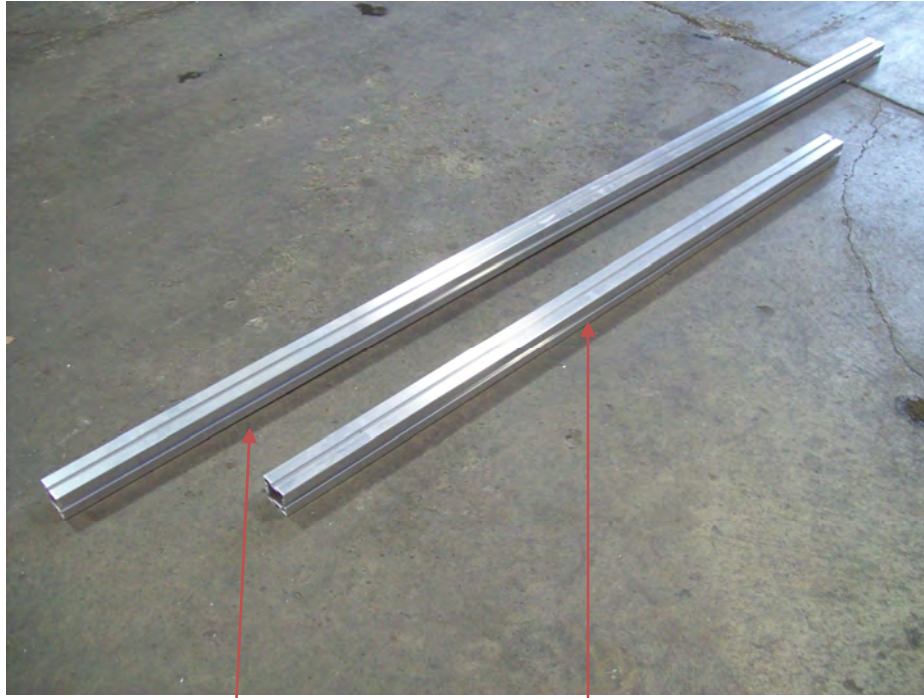




Install the upper horizontal bar into the top of each vertical post.



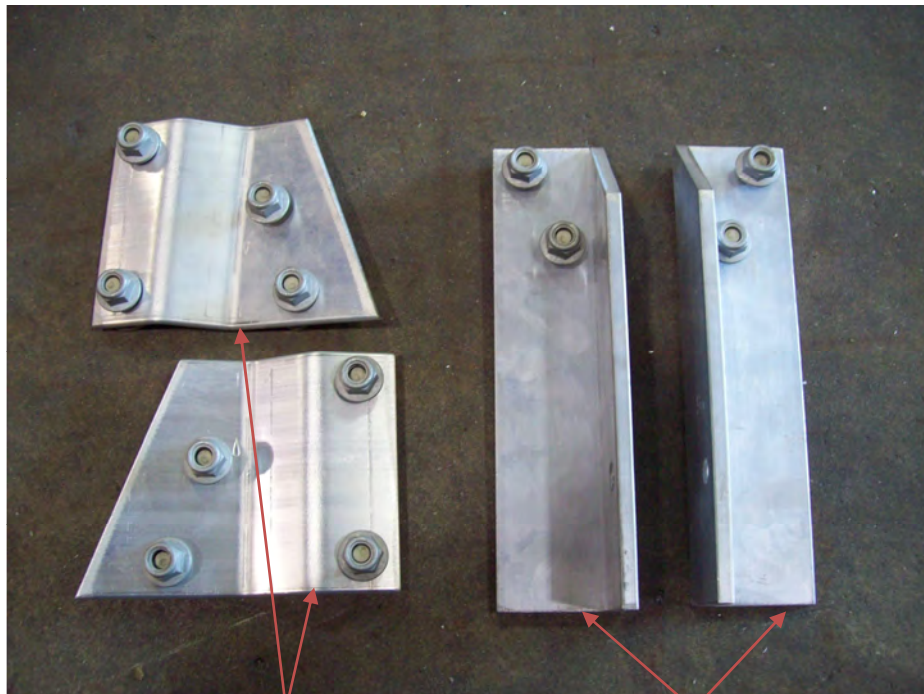
Position the top of both angle brackets on the horizontal bar even with the top of each vertical post.



Front gusset 112 1/4"

Rear gusset 73"

Locate the front and rear gussets.

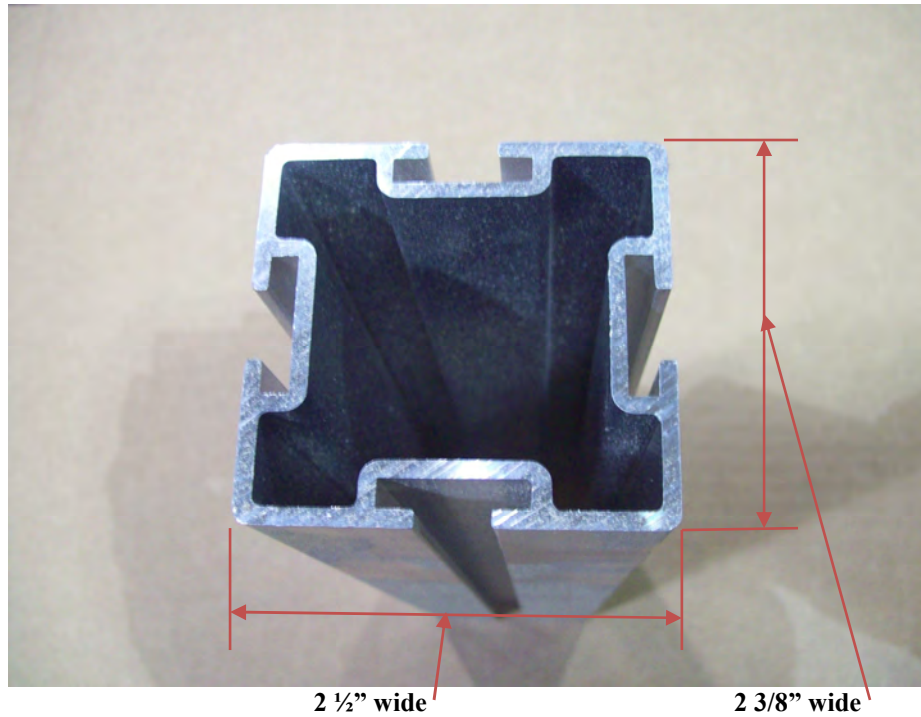


Top offset attaching plates

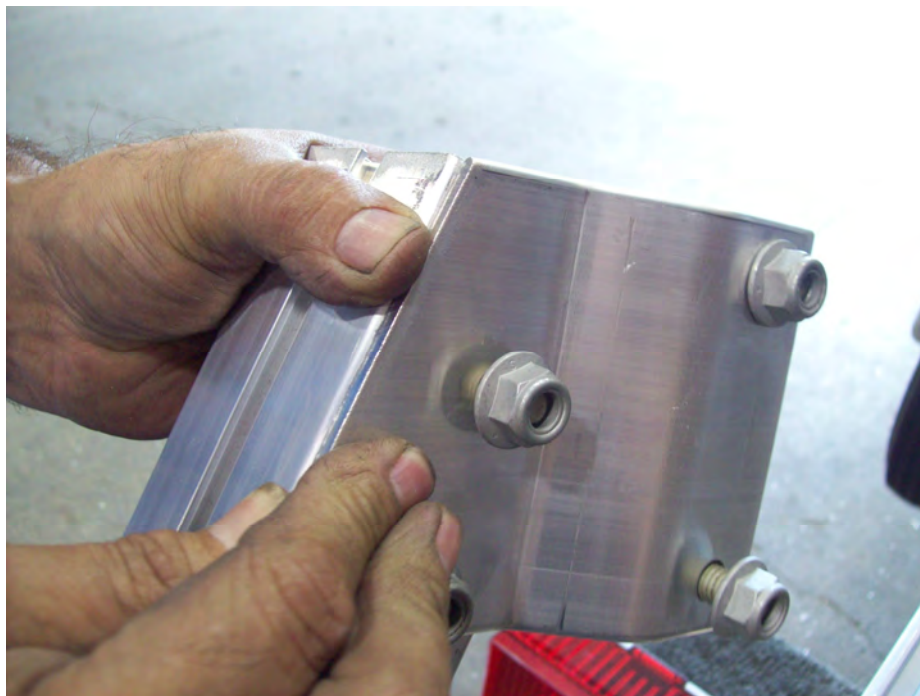
Bottom attaching angles

Locate two top offset attaching plates and two bottom attaching angles for the rear gusset.

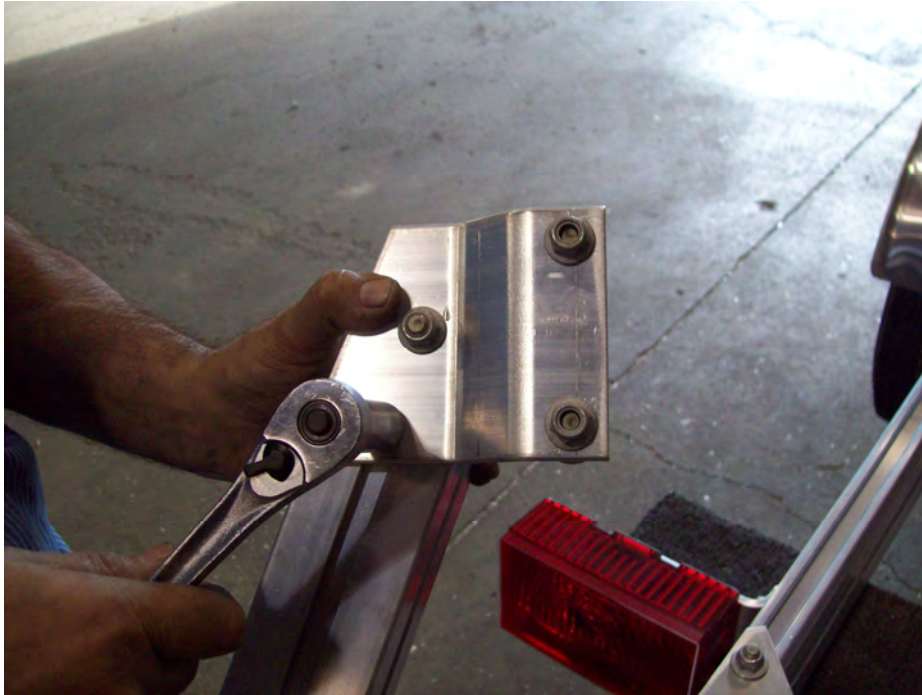




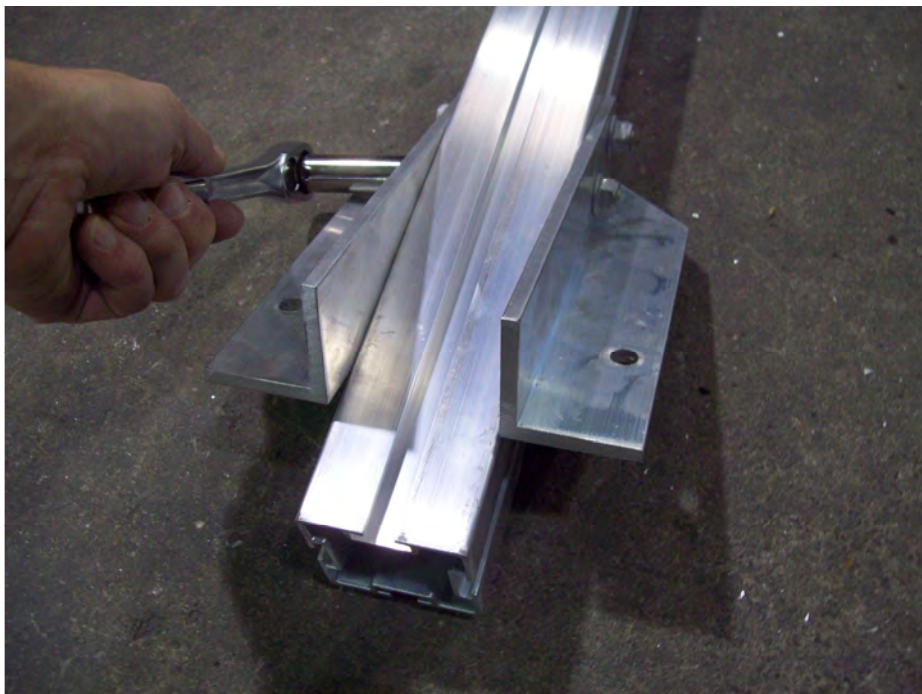
The front and rear gusset bars are not a perfect square. One side is  $2\frac{1}{2}$ " wide the other is  $2\frac{3}{8}$ " wide. The attaching plates will be mounted to the side that is  $2\frac{3}{8}$ " wide.



Install both top offset attaching plates to rear gusset and position as shown.



Once in position tighten nuts on both sides.

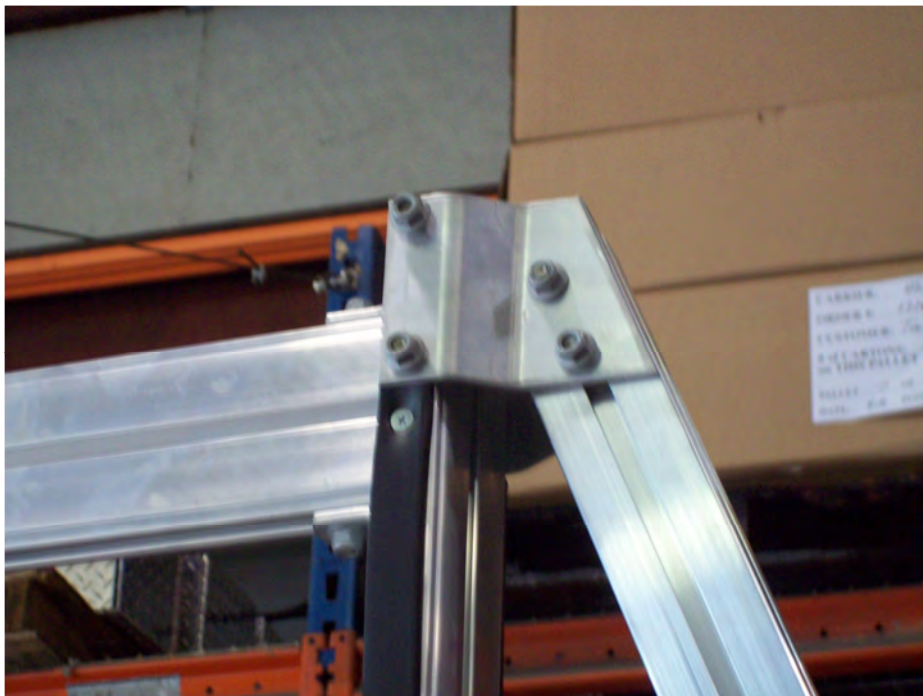


Install both of the bottom attaching angles to the gusset. Slide both angle plates about 2- 3" up on the gusset and snug the nuts.





Rear gusset should look like this when brackets are attached.

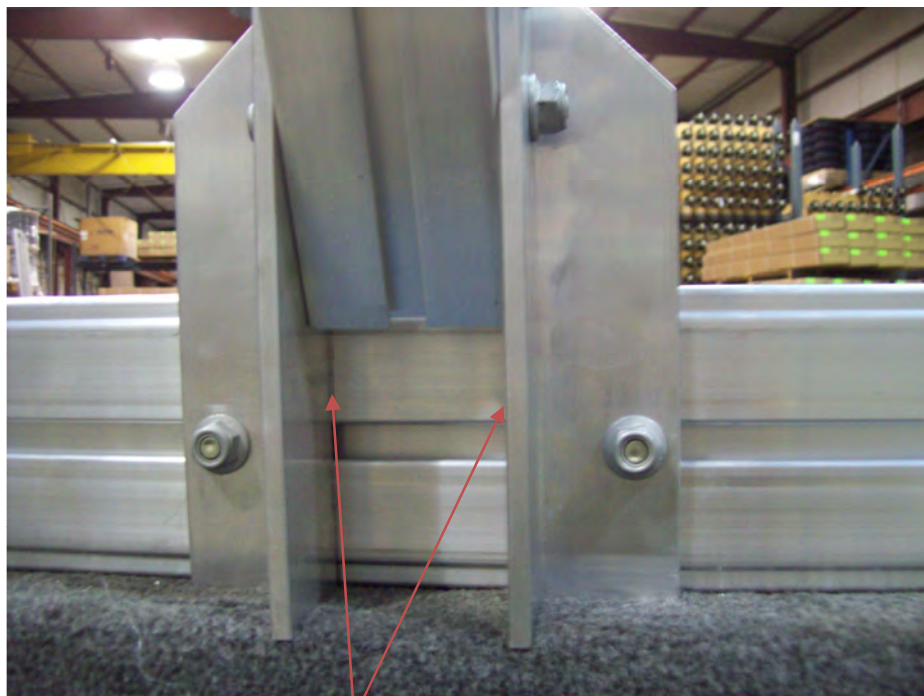


Insert T-bolts from the top offset attaching plates into the vertical post.



Pencil marks

Remove nuts on the back side of the rear cross member. Position T-bolts on rear cross member on each side of the pencil marks.



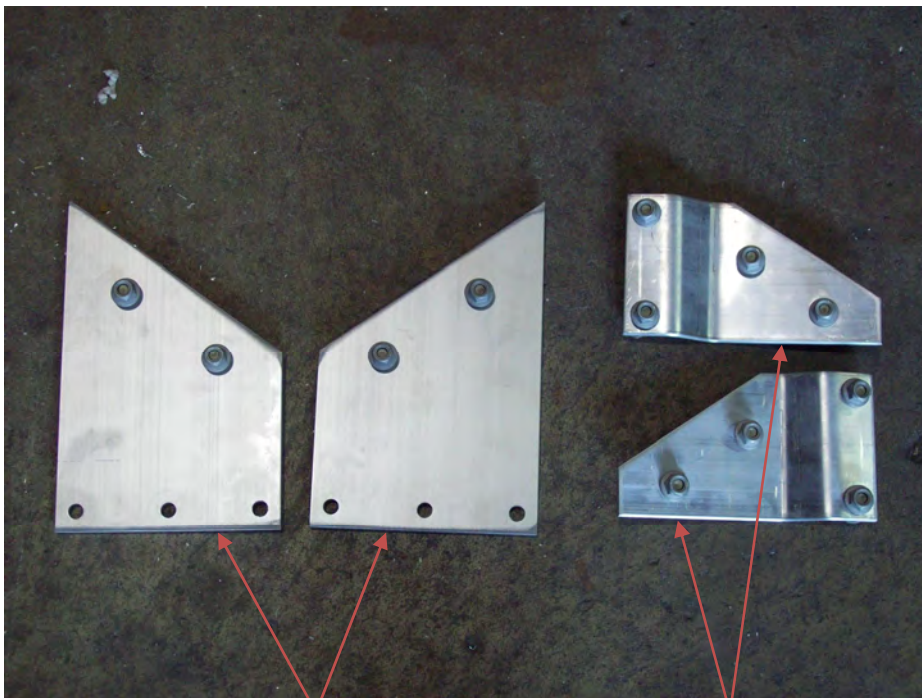
Pencil marks



Loosen angles and slide down over T-bolts. Attaching angles should line up with pencil marks on rear cross member. Reinstall nuts on T-bolts.



Now go back and tighten nuts on both top and bottom plates.



**Bottom attaching plates**

**Top offset attaching plates**

Locate two top offset attaching plates and two bottom attaching plates for the front gusset.

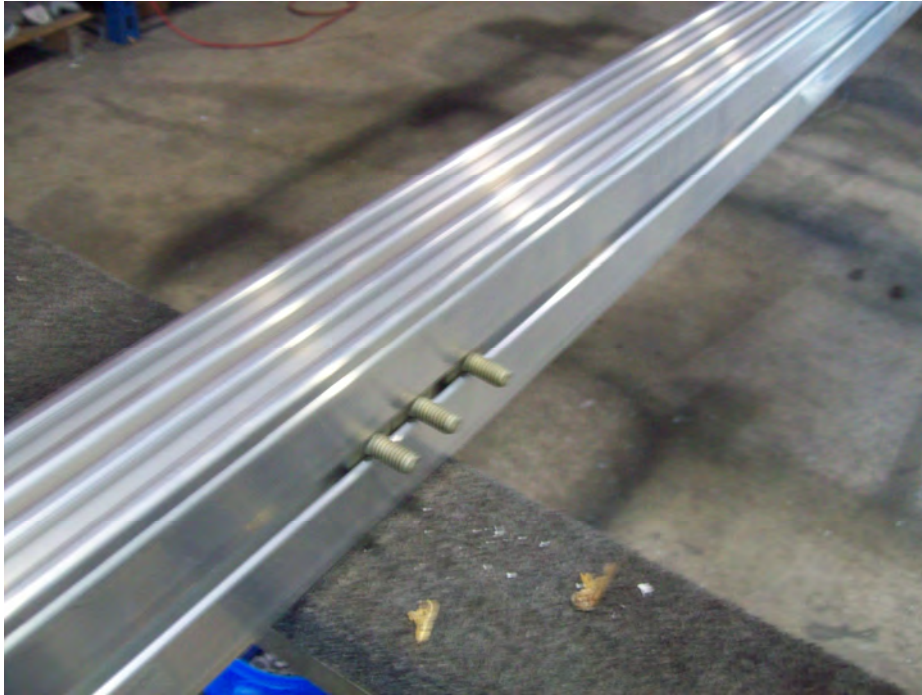


Install only the left side top plate. Position plate and tighten nuts.



Install the left bottom plate to the gusset. Position plate and tighten nuts.

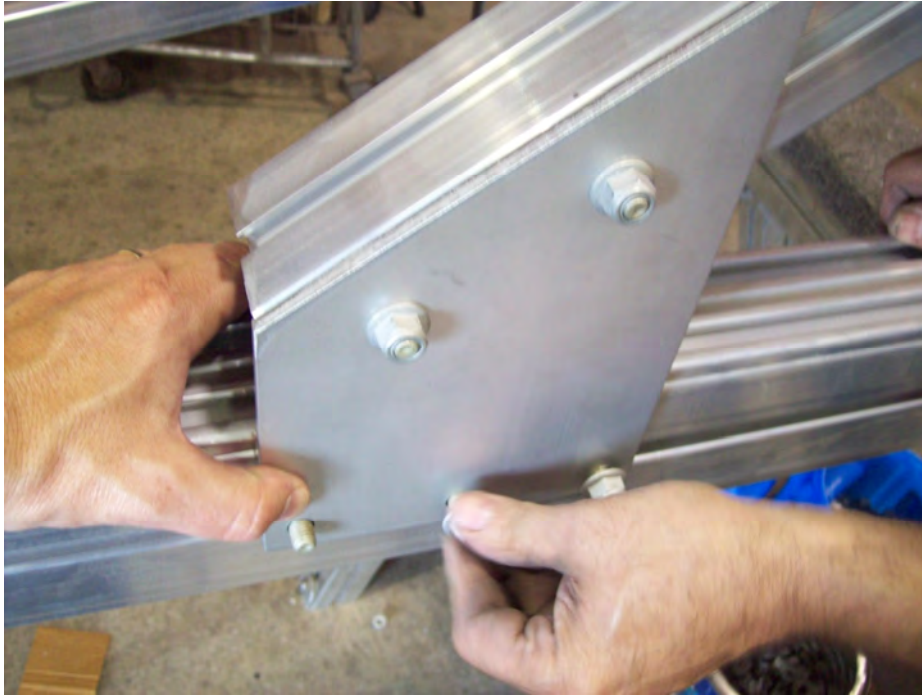




Locate the three T-bolts on the tongue section. Remove nuts and slide them towards the front.



Insert T-bolts from the top offset attaching plates into the vertical post.



Install the bottom attaching plate into the three T-bolts on the tongue section. Reinstall nuts, but don't tighten yet.



Install the right side top offset attaching plate.





Install the right side bottom attaching plate into the three T-bolts on the tongue section. Now go back and tighten all the nuts on the top and bottom plates.

### Torque lug nuts



Tighten to 80 foot pounds in a crossing pattern. Re-tighten after 25 miles.

### Finished trailer



Trailer shown with optional spare tire, carrier, and box







KJM 11/15/11