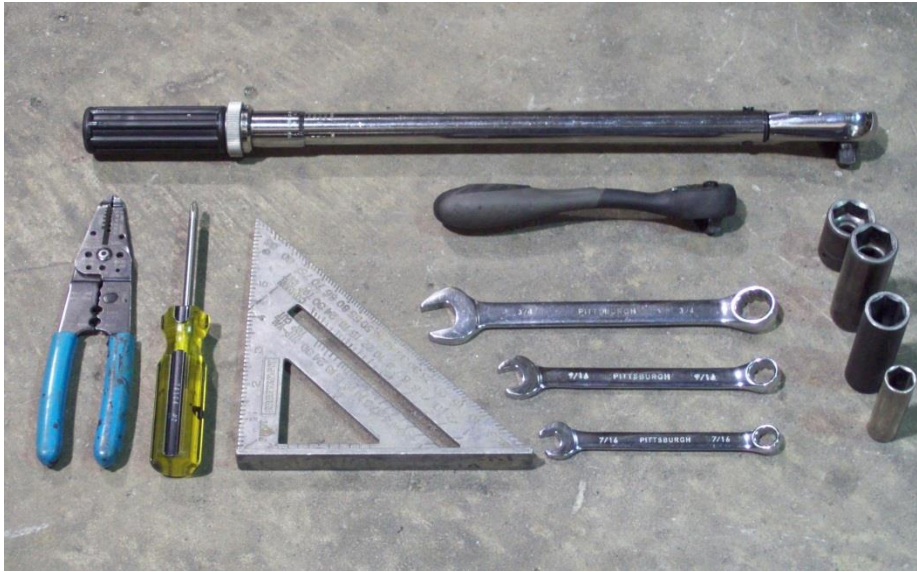


UT-1200



Torque wrench, carpenters square, wire cutters, Phillips screwdriver, 7/16, 9/16, and 3/4" combination wrenches, ratchet, 9/16, 3/4, 13/16", and 7/8" sockets.

ASSEMBLY REQUIREMENTS

***Torque all T-bolt nuts to 35 foot pounds.**

***Check all lights before towing.**

***Tire pressure not to exceed recommendation on tire tag next to the serial tag.**

***Re-torque wheel nuts after first 25 miles to 80 ft. pounds and periodically thereafter.**

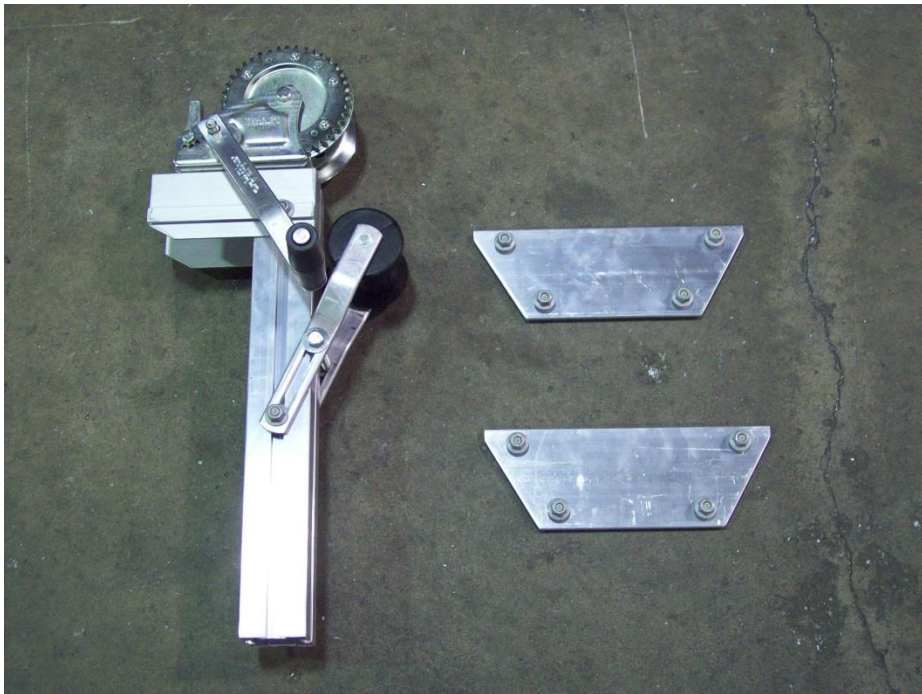
Failure to follow the assembly instructions could result in serious injury or death.

Incorrect assembly or modifications to your trailer will void any specific or implied warranty.

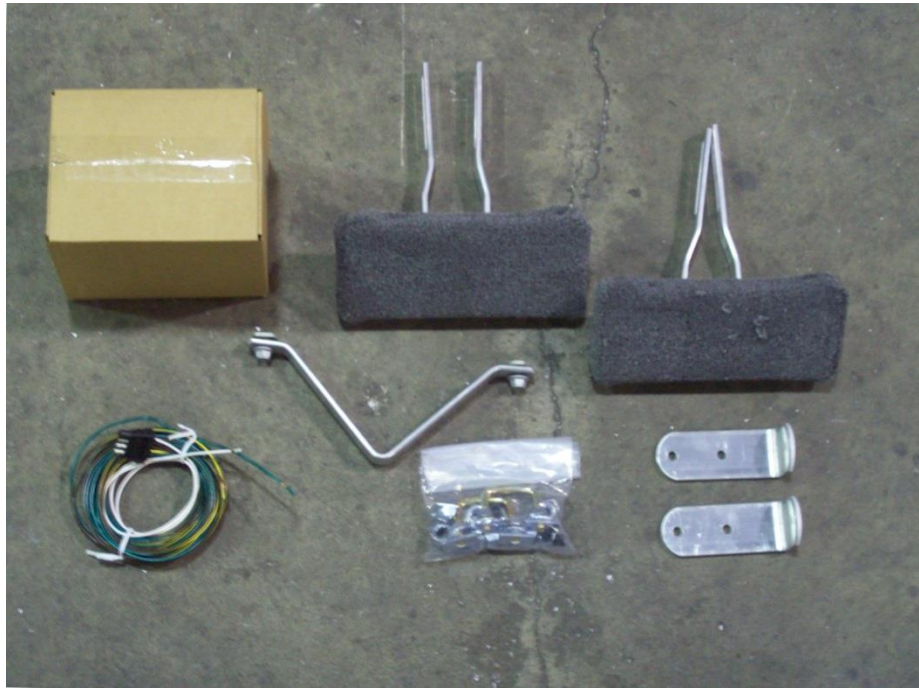
For questions or assistance assembling your trailer call 800-282-5042.



Tongue, apex plate and coupler



Winch post with winch and diagonal side braces.



Light kit, harness, skid, padded cradle, tail light brackets, and bag of web strap clips and lug nuts.



Axle, U-bolt kit and leaf spring assemblies.



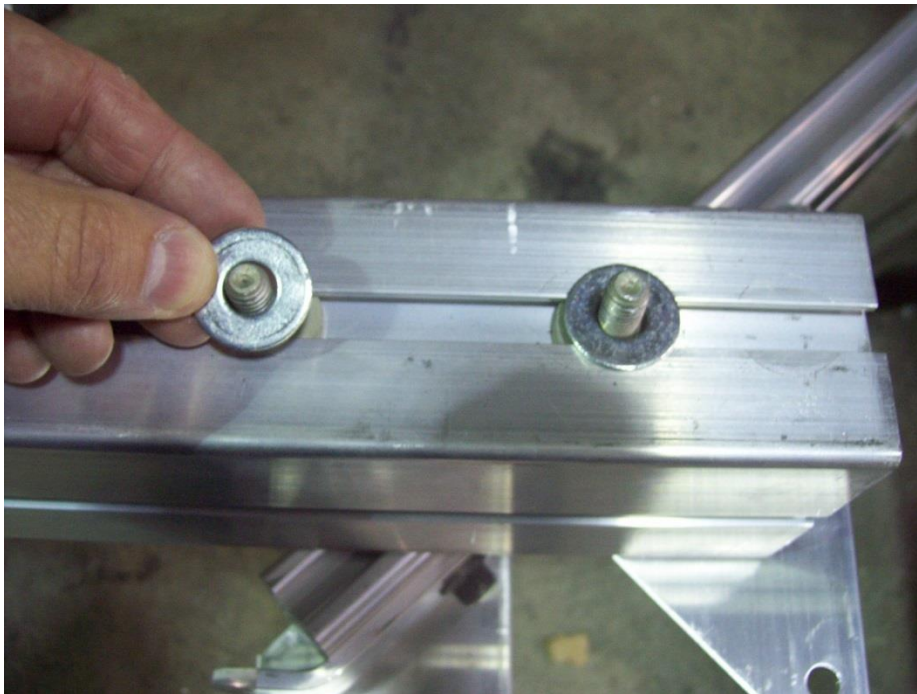
Wheels, fenders and fender braces



Unwrap the frame and place on saw horses as shown.



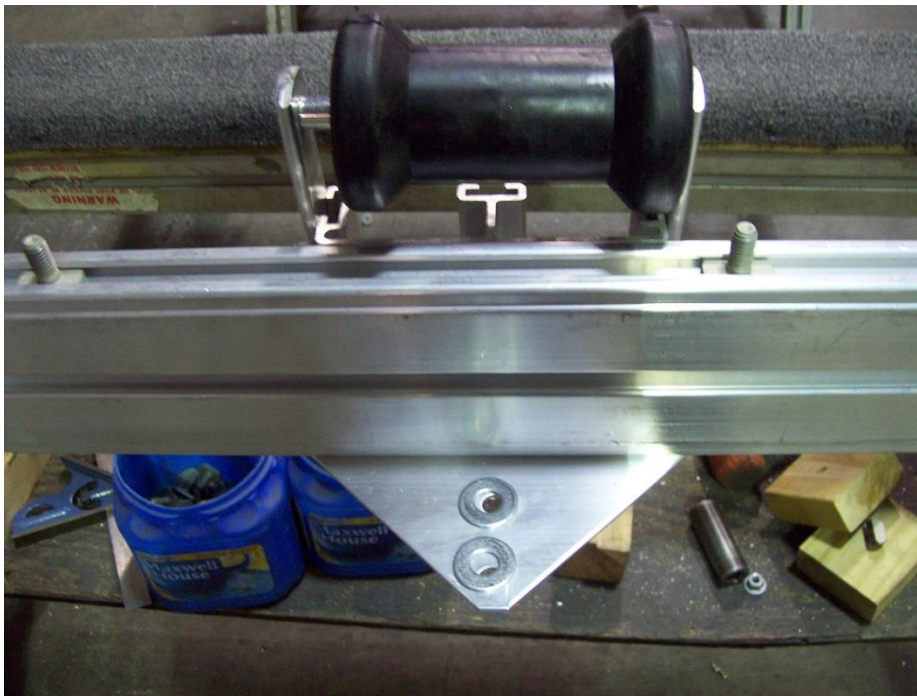
Shown upside down



Turn the tongue section upside down. There will be four T-bolts with washers and nuts. Remove the four washers and nuts from the T-bolts.



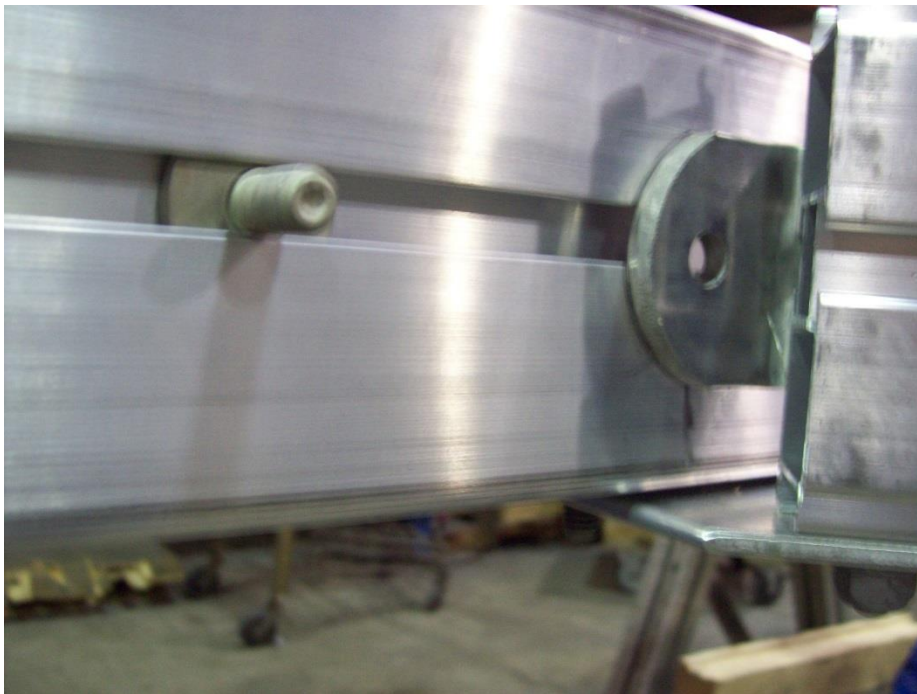
Place two washers on the front apex plate as shown.



The last two washer place on the T plate at the front cross member.



Install the upper plate over the T-bolts on the cross member. Then align the T-bolts underneath the tongue until they fall into the holes.



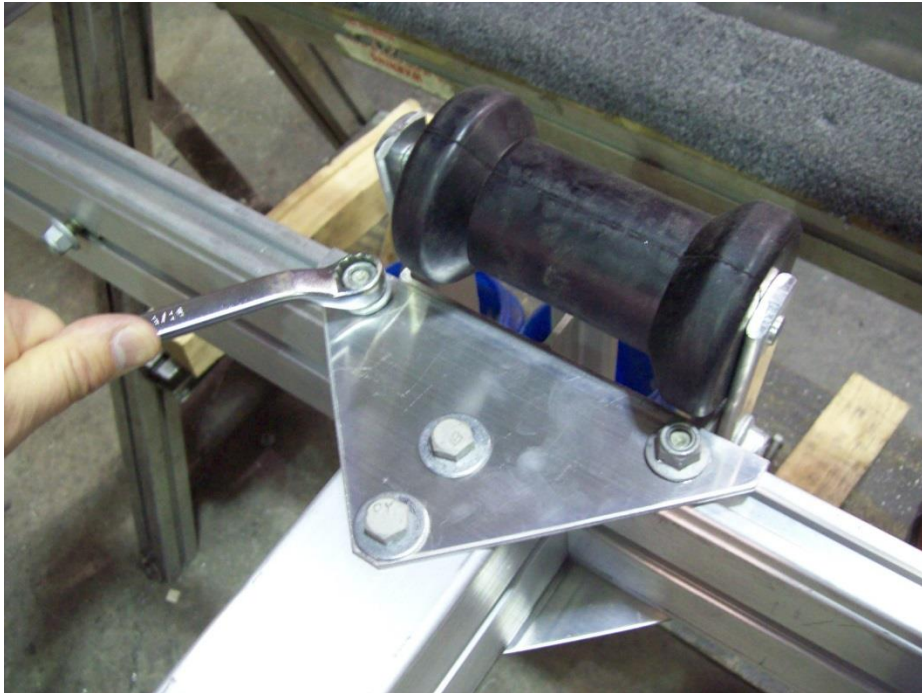
Remove the nuts on both sides of the tongue section.



Remove the nuts from the diagonal bracket.



Tilt the diagonal bracket up in the front to accommodate the T-bolt in the tongue section. Insert the bracket over top of the T-bolt and back over the ones on the diagonal bracket.



Re-install nuts on the diagonal brackets, upper plate and tighten nuts.



Locate the apex plate and remove the T-bolts and nuts from it.



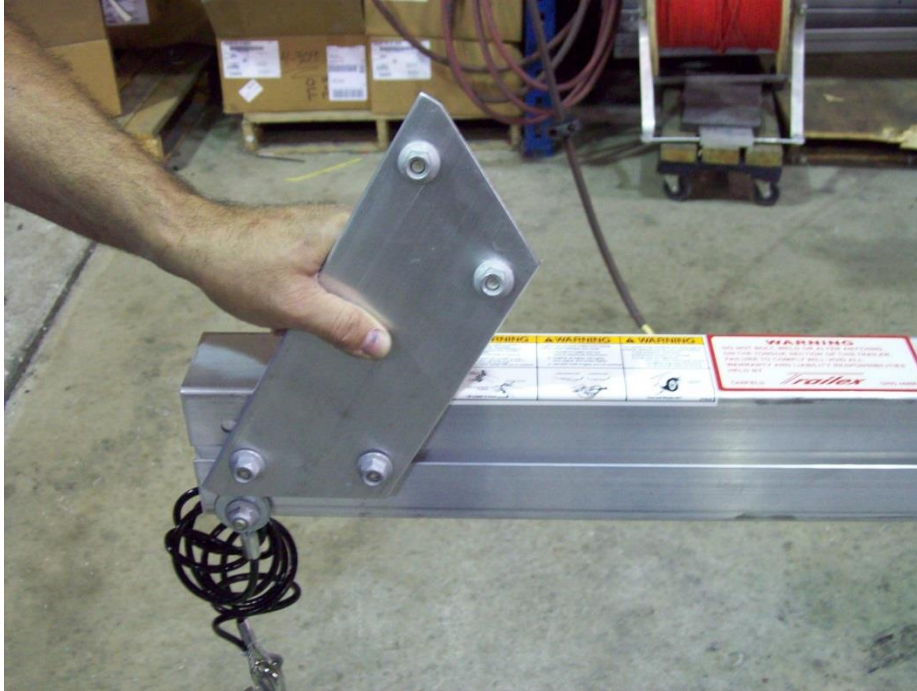
Take the four T-bolts and insert two of them into each side of the diagonal.



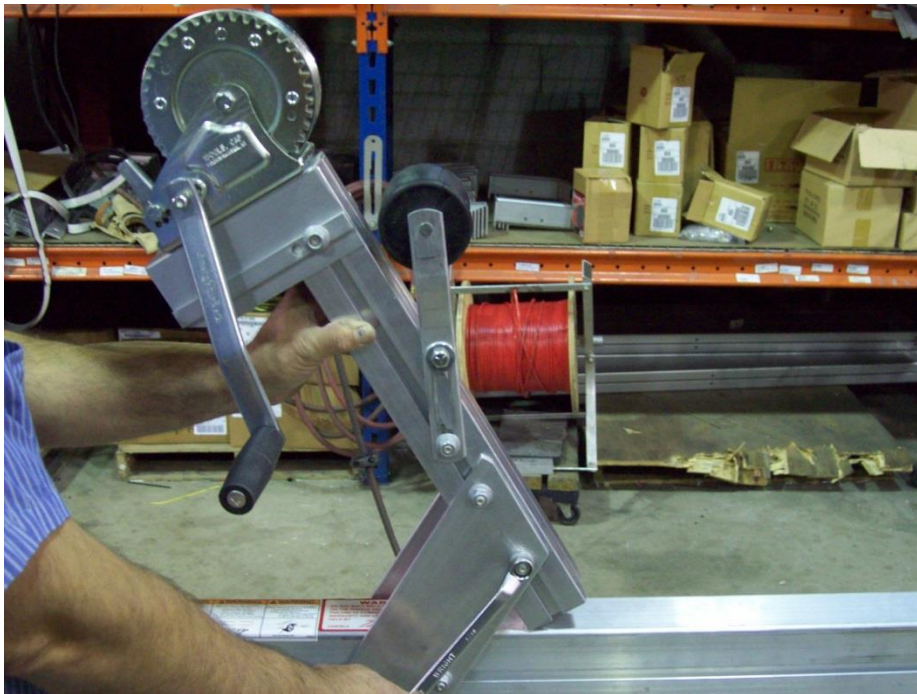
Install the apex plate over top of the T-bolts. Install the nuts and tighten.



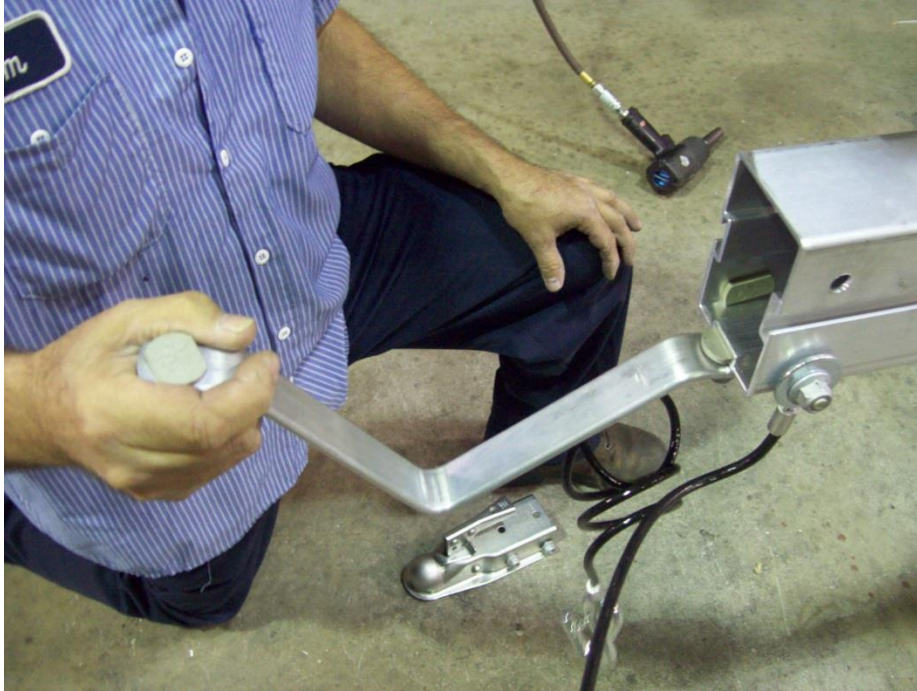
Locate the two diagonal side braces for the winch post.



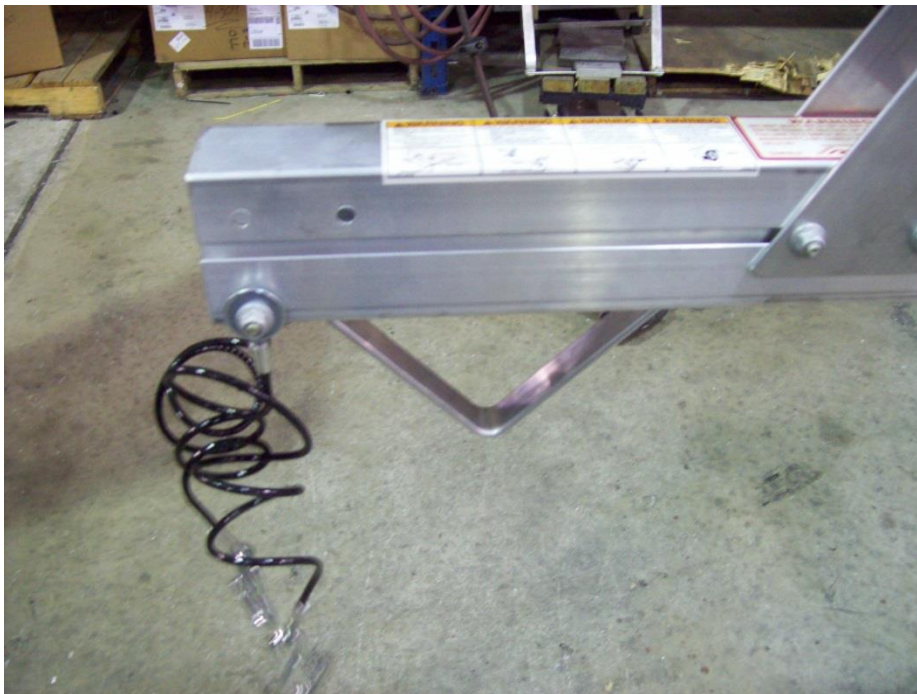
Install the winch post diagonal braces on both sides of the tongue section as shown.



Now install winch post onto braces as shown. Once final placement has been determined tighten nuts on diagonal braces.



Locate the skid bracket. Slide bracket into the bottom channel of the tongue section.



Position bracket as shown and tighten nuts.



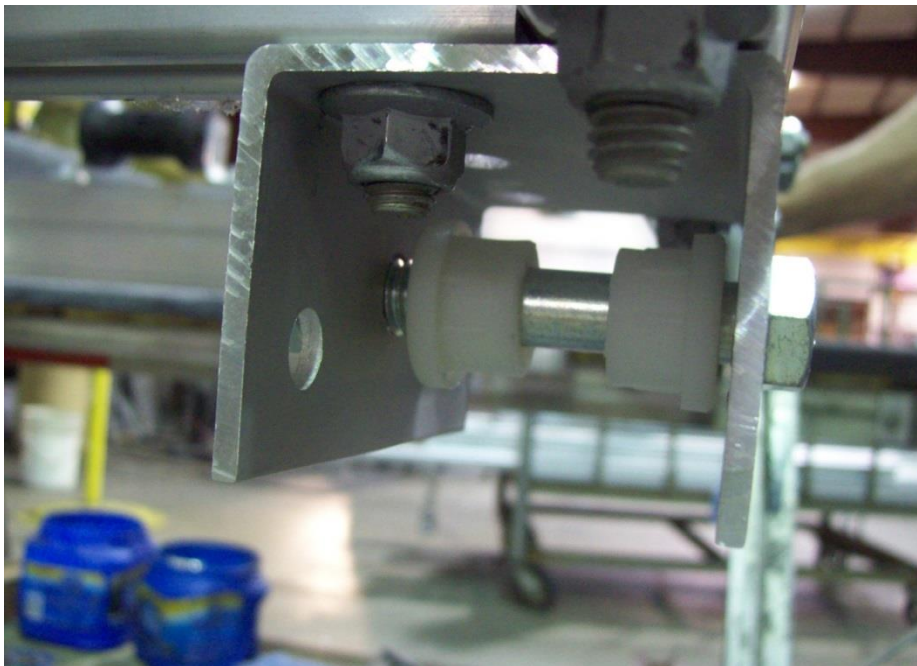
Remove bolts and nuts from coupler.



Install the 3 3/4" bolt at the back of the coupler and the repair T-bolts in the front holes.



When tightening nuts be sure not to over tighten, by doing this it could result in crushing the tongue inwards. **Do not torque nuts on coupler.**



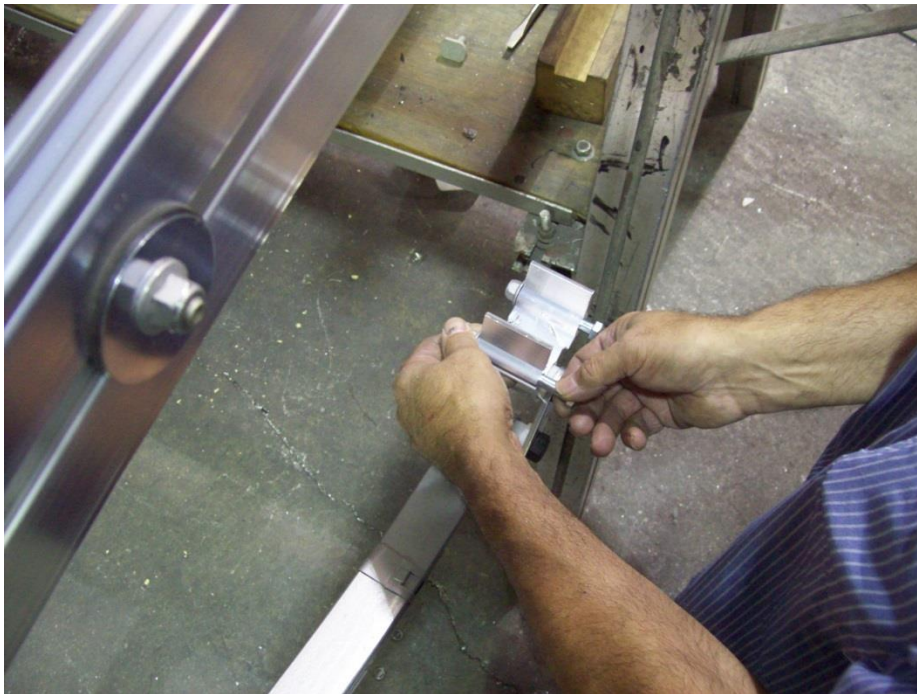
At the front sub rail clip you'll find a bolt, bushing and nut to mount the spring. Remove the parts from the sub rail clip.



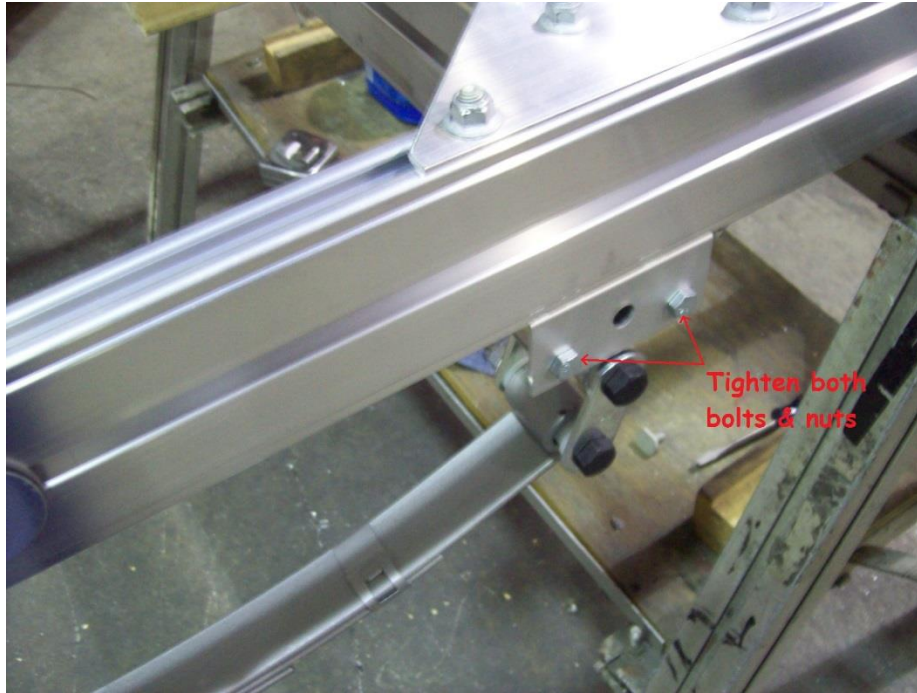
Install bushing on each side of the front spring. Then insert back into the sub rail clip.



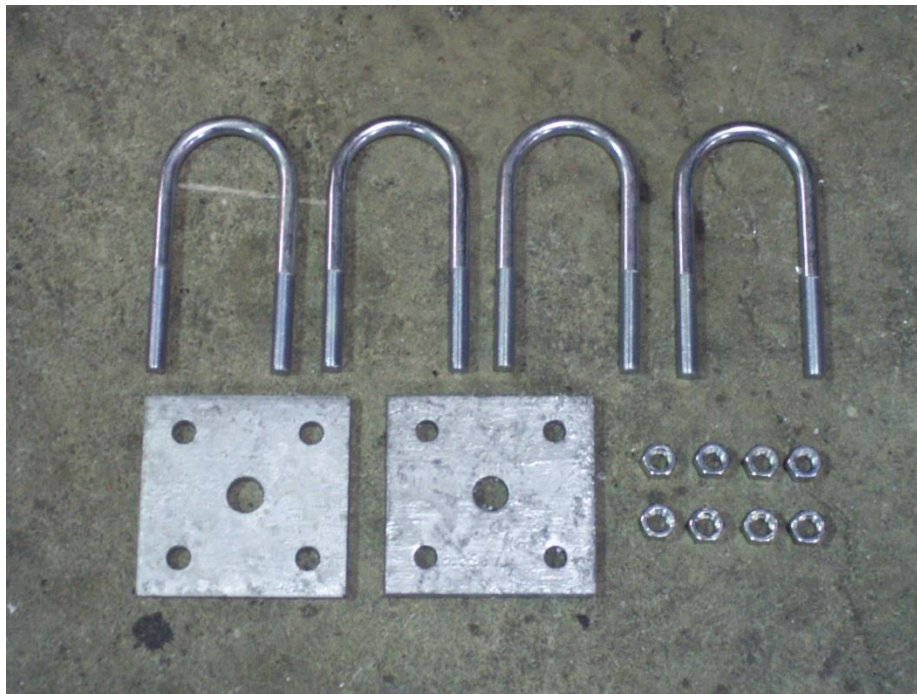
Insert bolt back through the spring and install nut. Do not tighten yet.



Remove bolts and nuts from the spring hanger. Install hanger back into sub rail clip and reinstall bolts and nuts.



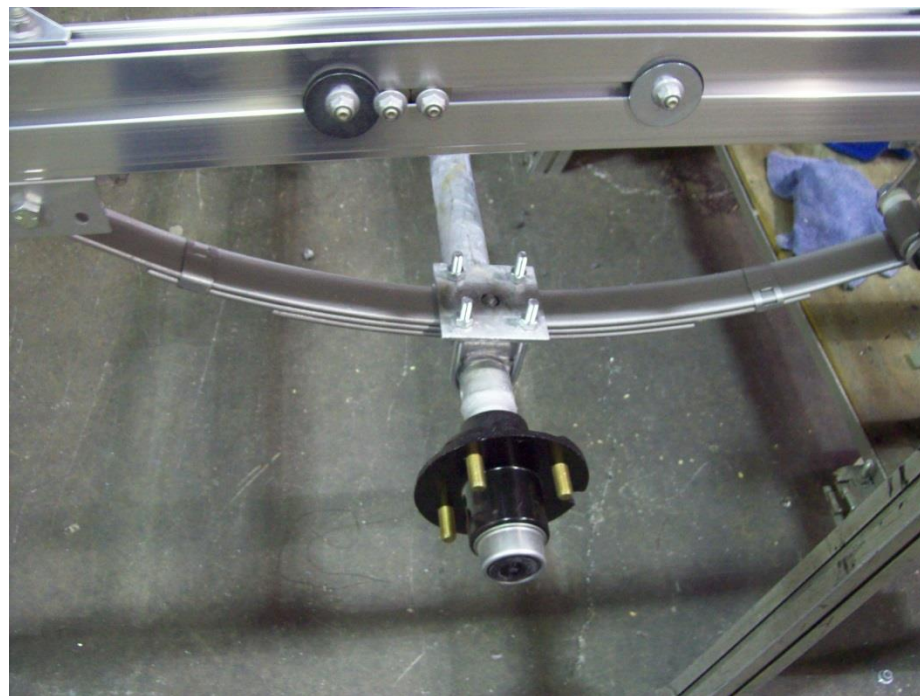
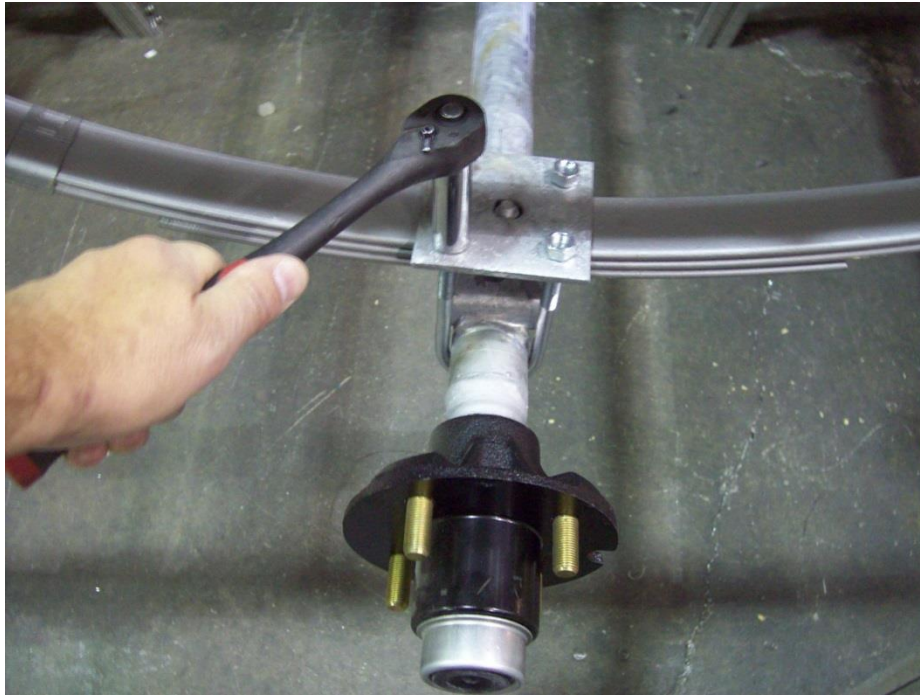
Once the hanger is in position tighten nuts. **Do not torque these bolts.**



Locate 4) U-bolts, 2) Tie plates, 8) Nuts



Install U-bolts over the axle. Insert the U-bolts through the tie plates and install nuts.



Tighten nuts evenly. **Do not torque nuts.**



Now go back and tighten the front spring bolt and the shackle bolts.
Do not torque nuts.



Locate the two fender brackets with hardware. Remove the bolts, washers and nuts from the brackets.



Insert the bolt through the washer and then into the fender.



Install fender bracket and nut then tighten.



Remove the two center nuts and loosen the outside nuts on washers.



Place the fender bracket over the two center T-bolts and align it. Slide the outside washers over into position and tighten all nuts at this point.



Install the wheels with the valve stems facing out. Install wheel nuts with the tapered side facing the wheel.



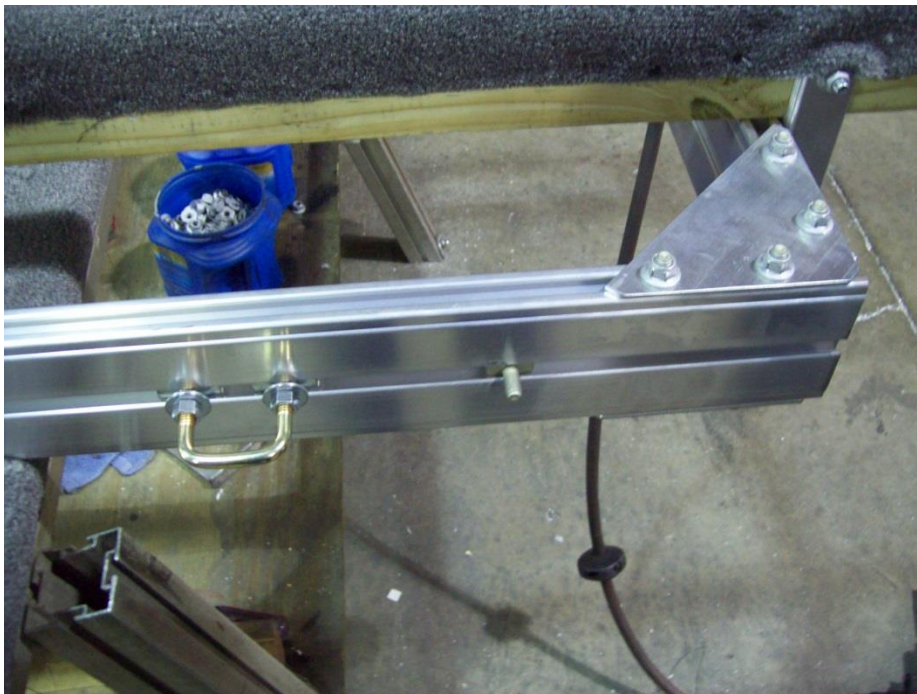
At the rear of the trailer remove one T-bolt on each side rail of the trailer.



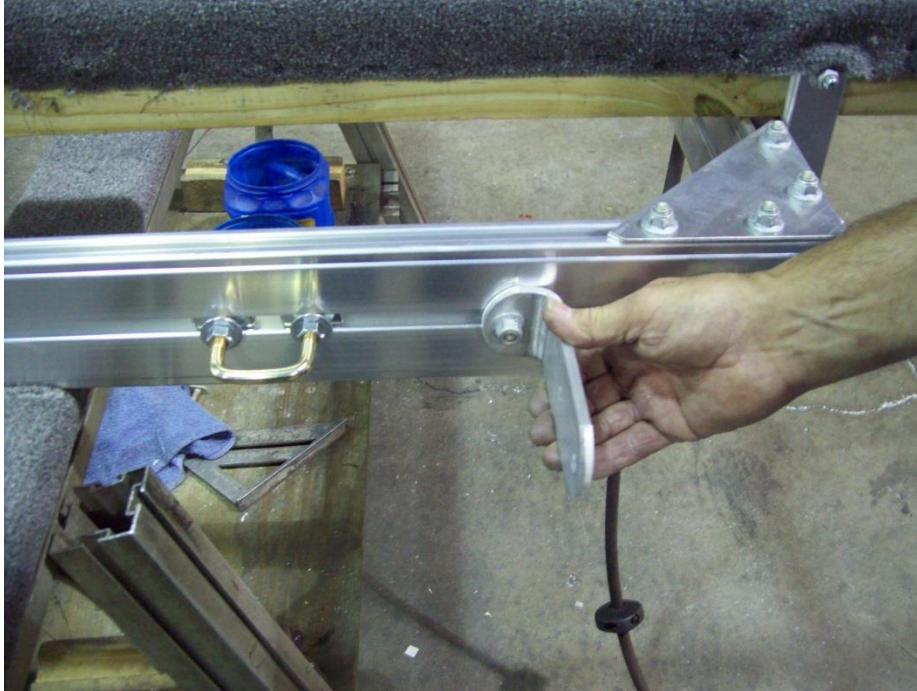
Locate two web strap clips.



Insert one web strap clip into the side rail on each side. Final position will be determined when boat is on the trailer.



Reinstall one T-bolt on each side of the side rail. These will be used to install the light brackets.



Install tail light bracket and nut over T-bolt. Then position bracket 7" away from the rear of the trailer. Tighten the nut once it's in place. Repeat for the other side.



Tighten web strap clip.



Remove the nuts on both sides of the front cross member.



Install slotted brackets over T-bolts and reinstall nuts



Tighten nuts on brackets and bunks at this time. Repeat the process for the other side.



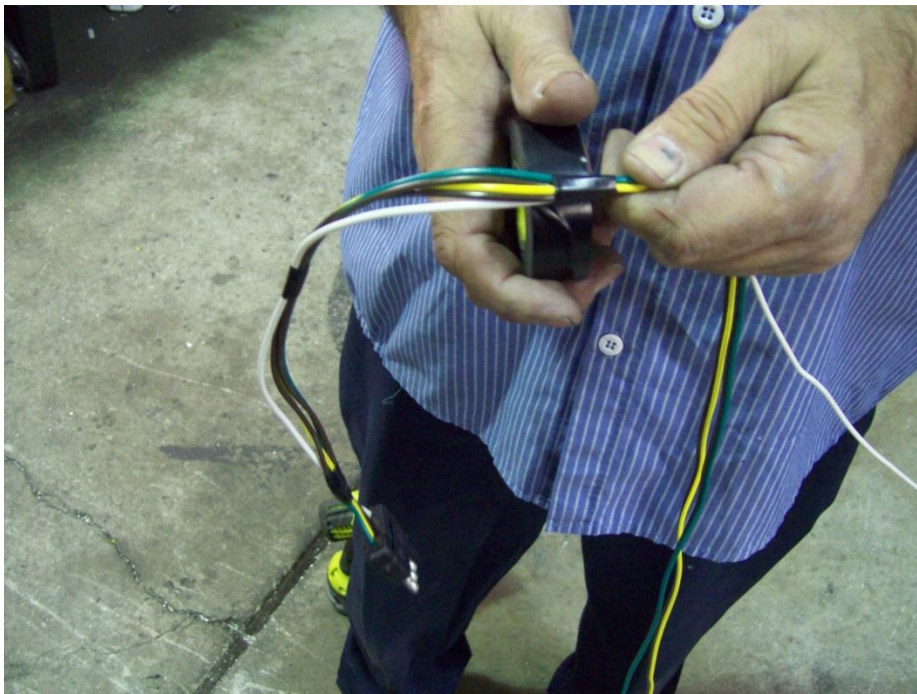
Final adjustments will be made when boat is on the trailer



Locate the harness, one Phillips screw and one small ring terminal. Strip white ground wire and install ring terminal.



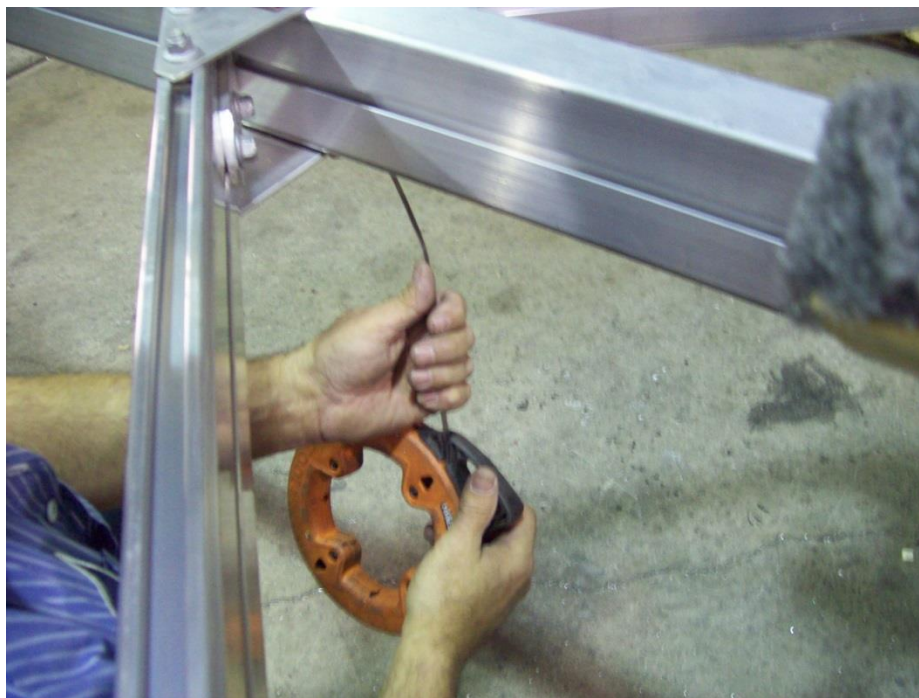
Install Phillips screw through the ring terminal into the predrilled hole located under the tongue just behind the coupler.



With electrical tape start at the four prong connector, keeping the harness tight and tape the wires together. Space the tape about the width of four fingers apart.



Tape the harness right up to the coupler and stop there. Your wiring harness should look like this when finished.



Locate the hole on the underside of the tongue just behind the front apex plate. Insert either a snake or sturdy wire through the hole and push towards the front of the trailer.



Tape wiring harness to the snake or wire and pull it back to the hole. Carefully pull the harness through the hole.



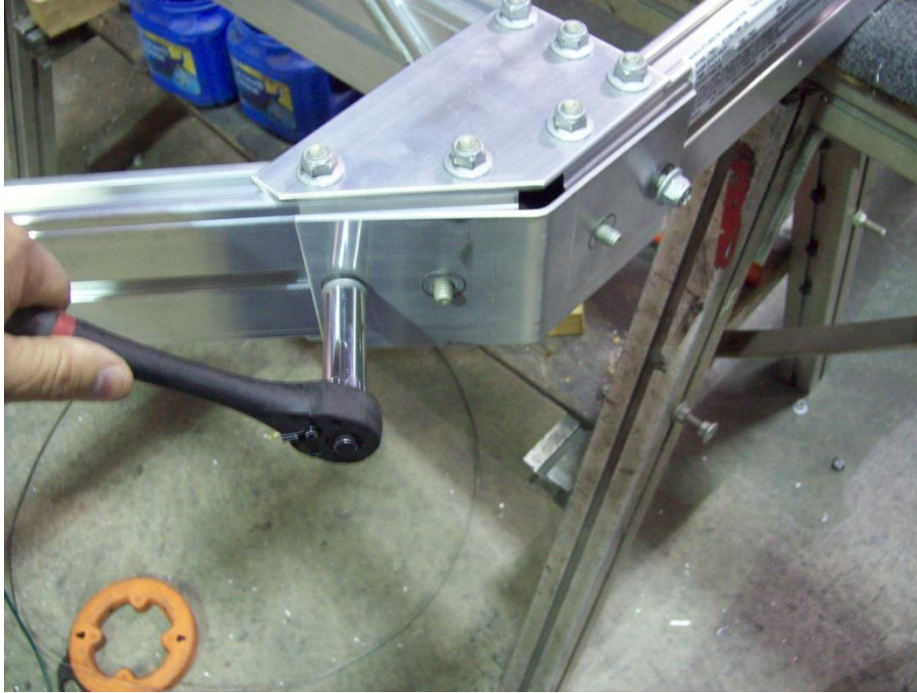
Insert harness through snap bushing and pull through.



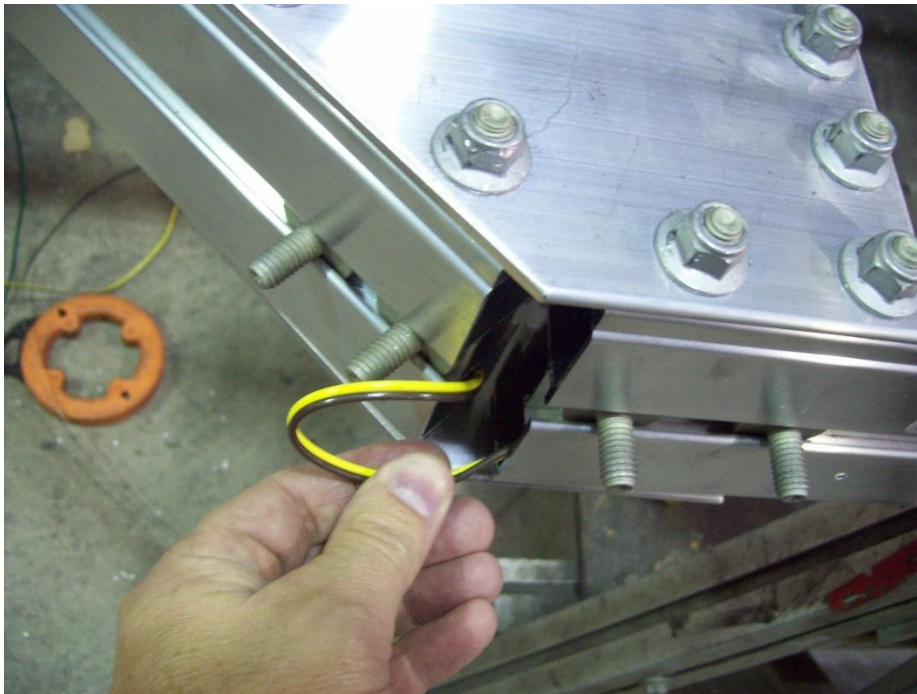
Once snap bushing is at the hole in tongue push it into place.



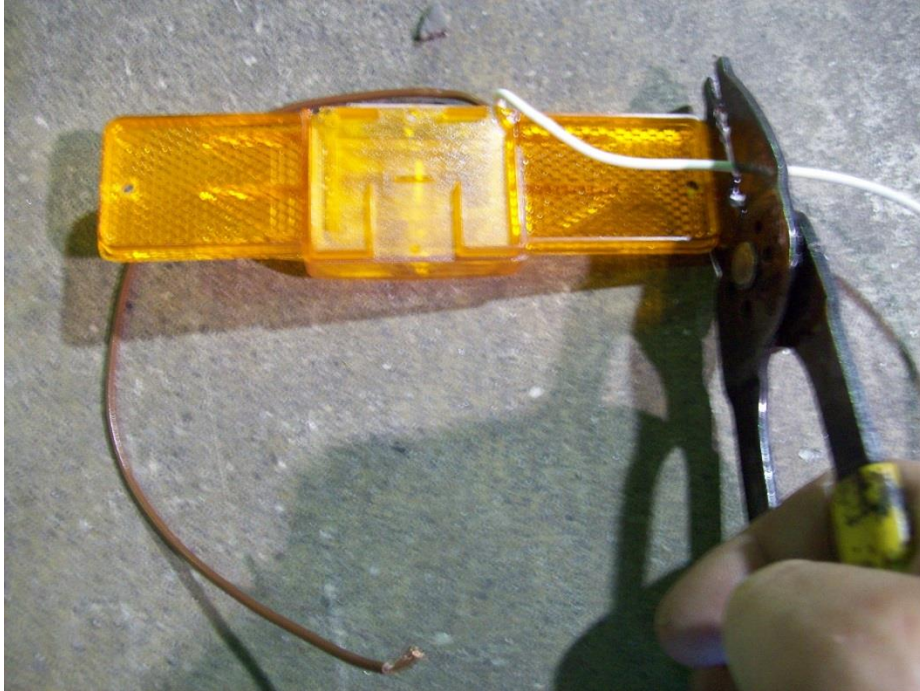
Pull the harness down on each side of the tongue section as shown. Insert harness into the bottom channel of each diagonal and push through.



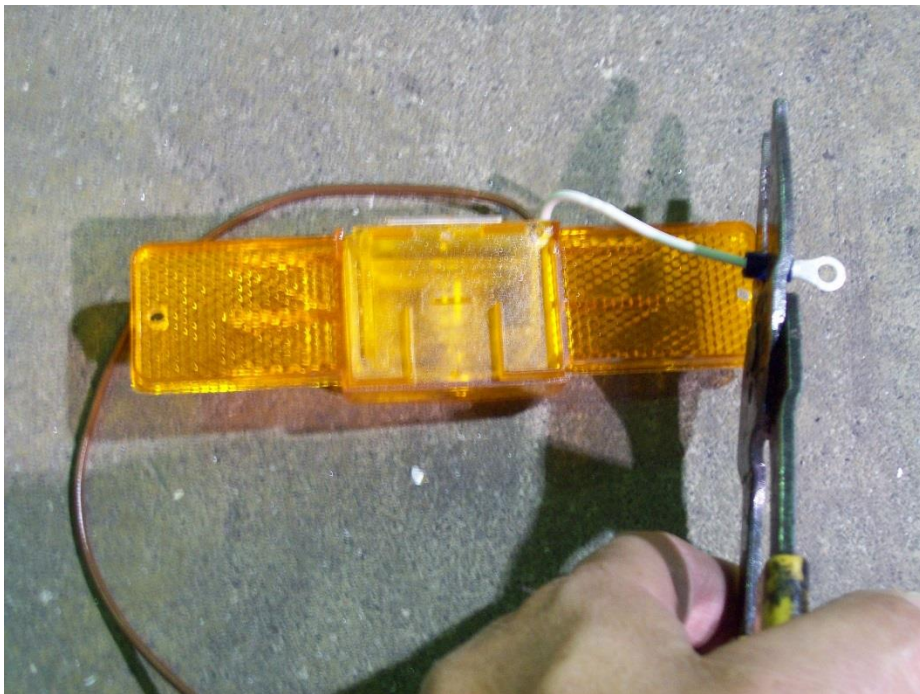
Remove the nuts on the corner plate.



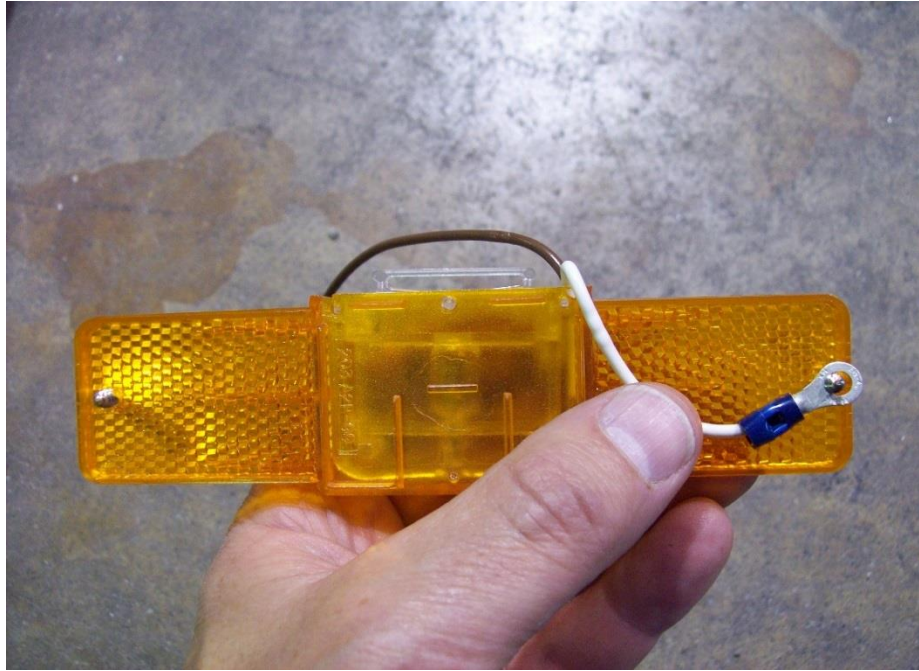
Pull harness through diagonal and insert into the bottom channel of the side rail as shown. Push harness through the side rail till it comes out the back. Repeat process for the other side.



Cut approximately 8 ½" off of the white wires on running light. Strip ¼" of insulation from the wire.



Install the ring terminal by crimping the terminal onto the bare wire. Repeat process for the other side.



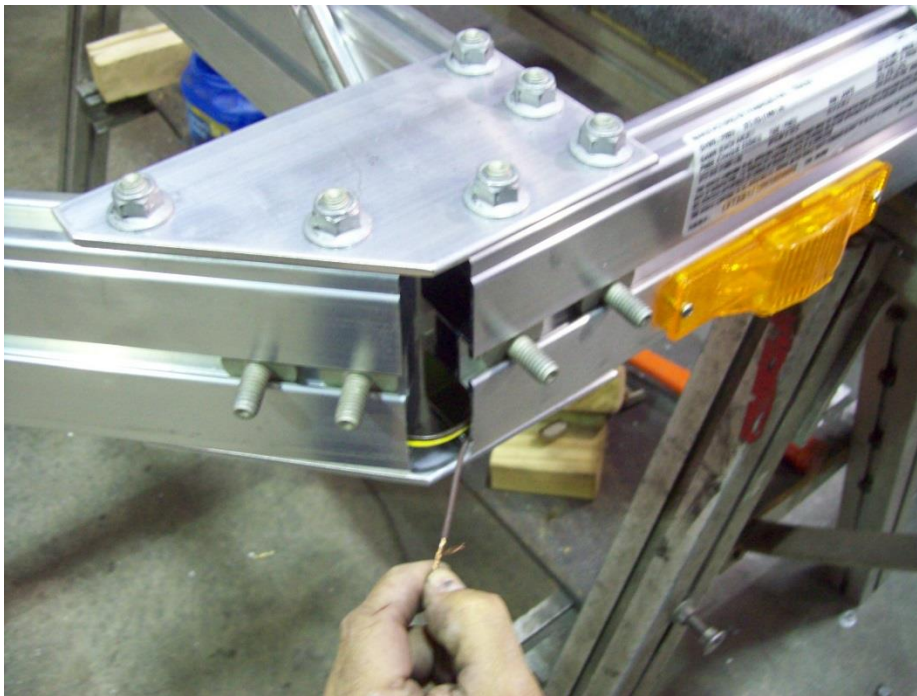
Align the ring terminal with the screw hole nearest the wire on the back of the running light. Make sure the wire is routed through the gap on the back of the light so it does not become pinched when the light is installed.



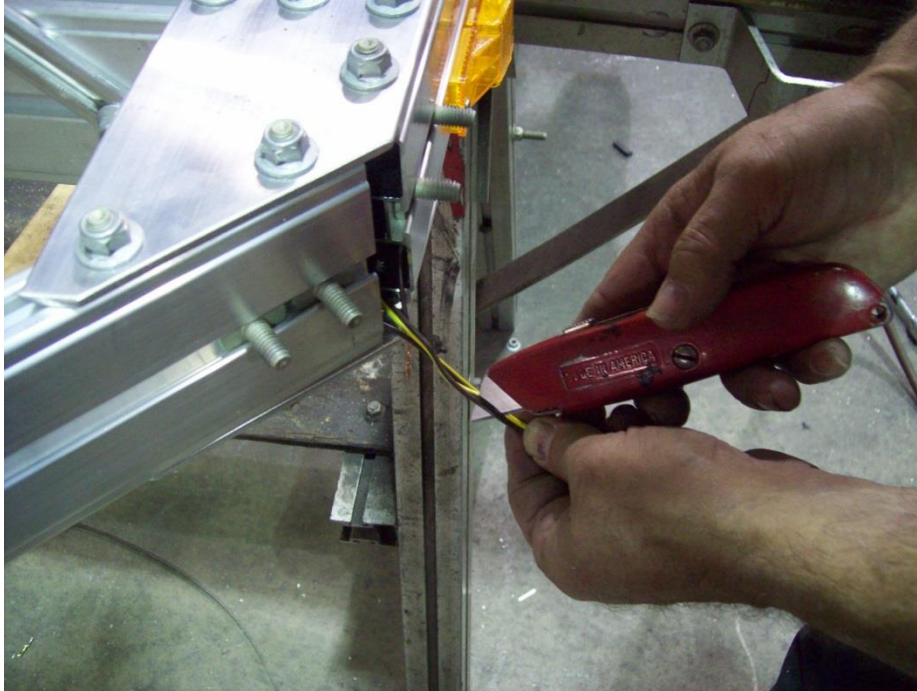
Insert the Phillip screws into the pre-drilled holes on the side rail. Be sure the screw is through the ring terminal on the back side of the light. This will supply a ground to the light. **Do not over tighten.**



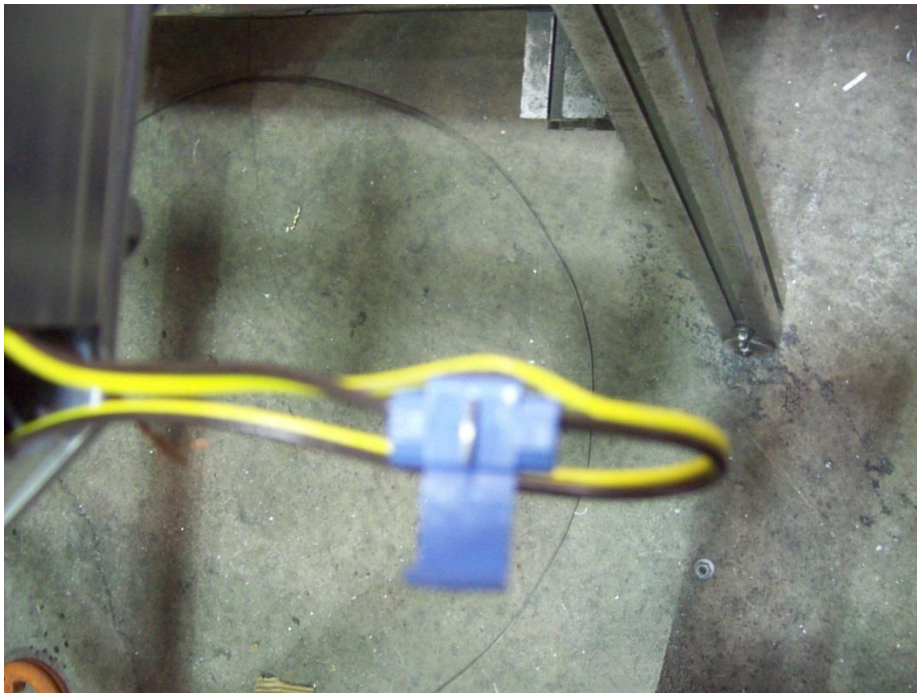
Insert brown through snap bushing. Then insert wire and snap bushing in the hole on the underside of the rail and push wire toward the front of trailer.



Pull the brown wire out of the channel.



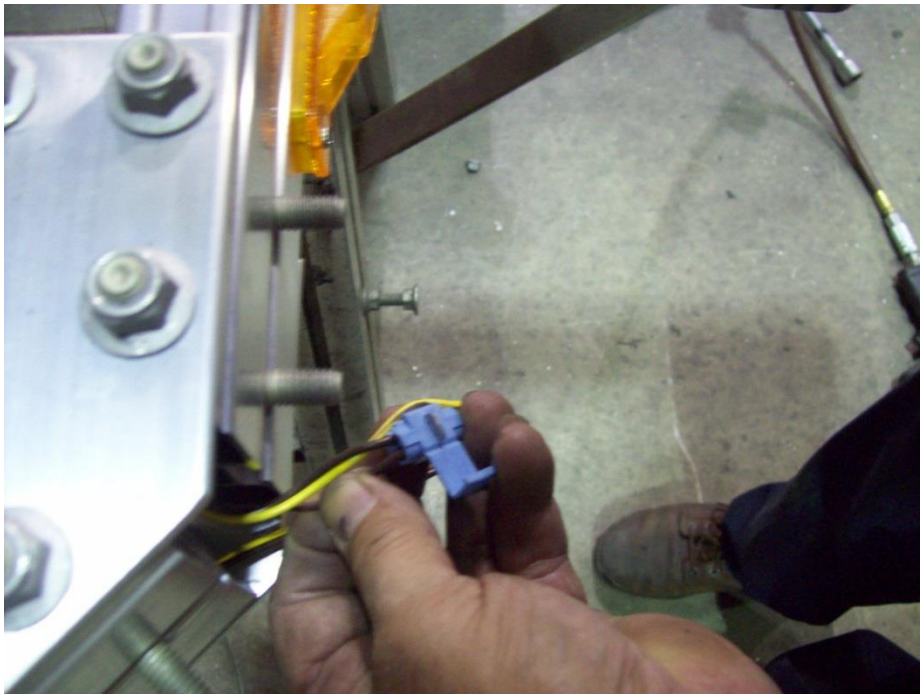
Pull the harness out a little way in order to separate the wires. Carefully separate the yellow from the brown wire with a knife. Be careful not to cut through the casing.



Insert brown wire from harness through the open slot of the scotchlok connector. Also under assembly instructions there is a section on how to install a scotch connector.



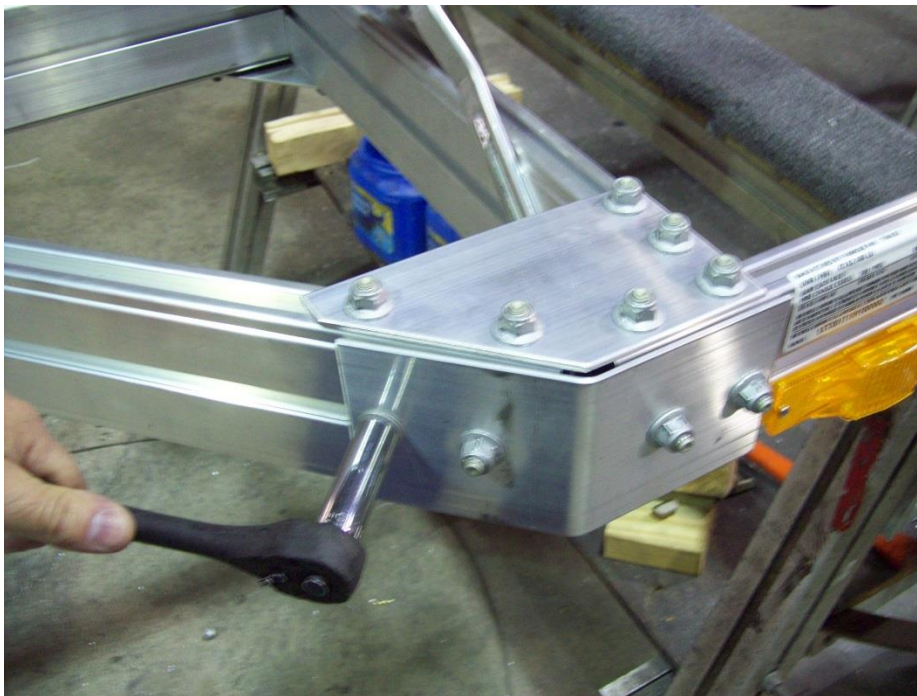
Take the brown wire from the side marker light and trim the strands of wires off.



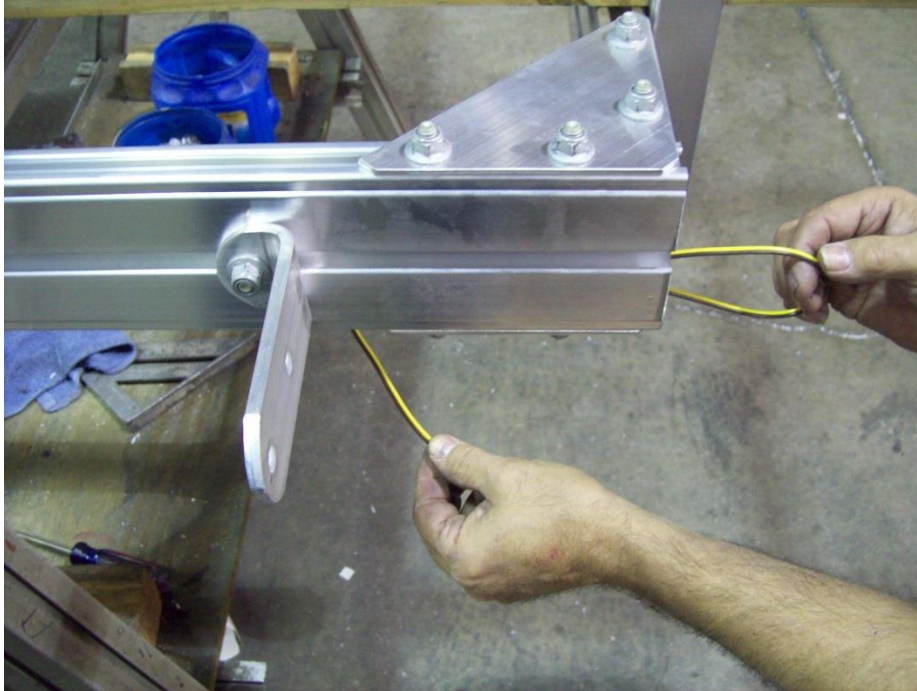
Insert the brown wire from the marker light into the closed off hole in the connector.



Use pliers to push metal spade down until it is flush with plastic. This is what makes the electrical connection between the two wires. Close the hinge cover on the connector. Push harness and connector back inside the channel. Repeat process for other side.



Re-install corner plate, nuts and tighten.



At the rear of the trailer insert harness back through the bottom channel. Push harness towards the hole just pass the bottom plate. Once harness is visible pull down through the hole carefully not to cut any wires.



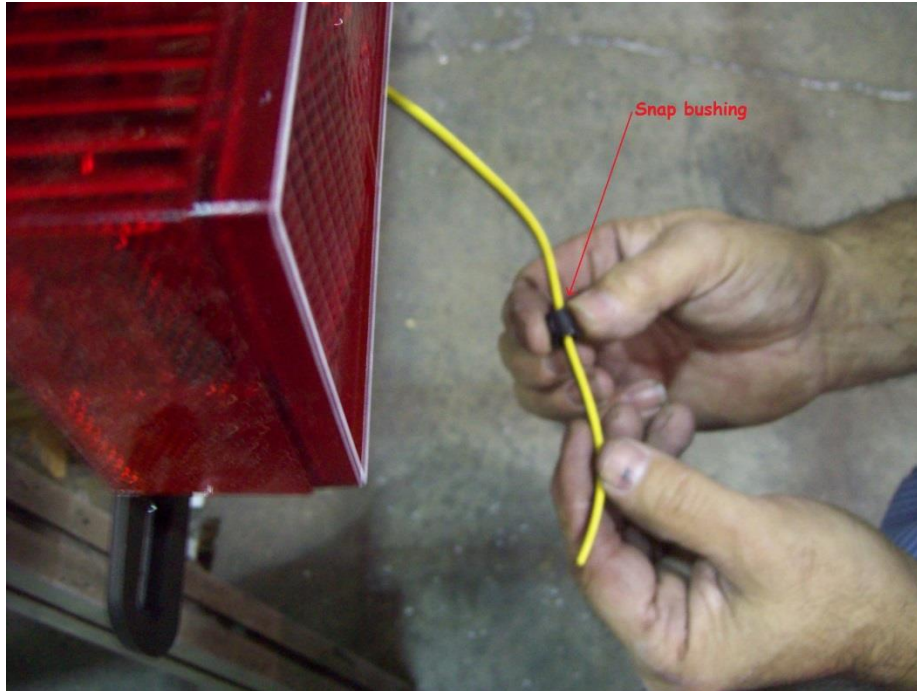
The light with the yellow wires is for the left (driver's side) of the trailer. Slide the carriage bolts in the slots in the back side of the light.



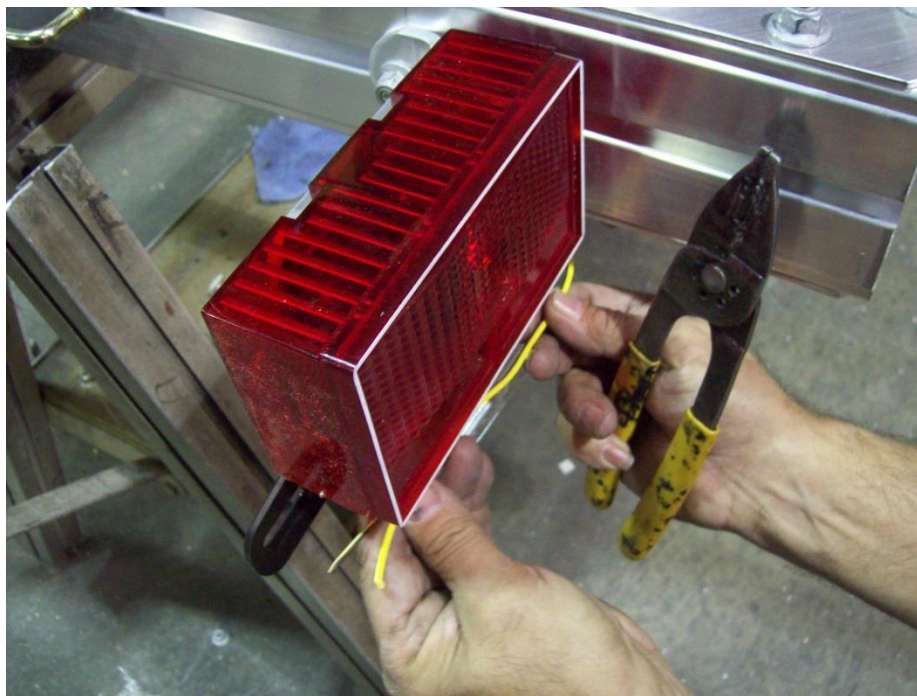
Insert license plate brackets over carriage bolts.



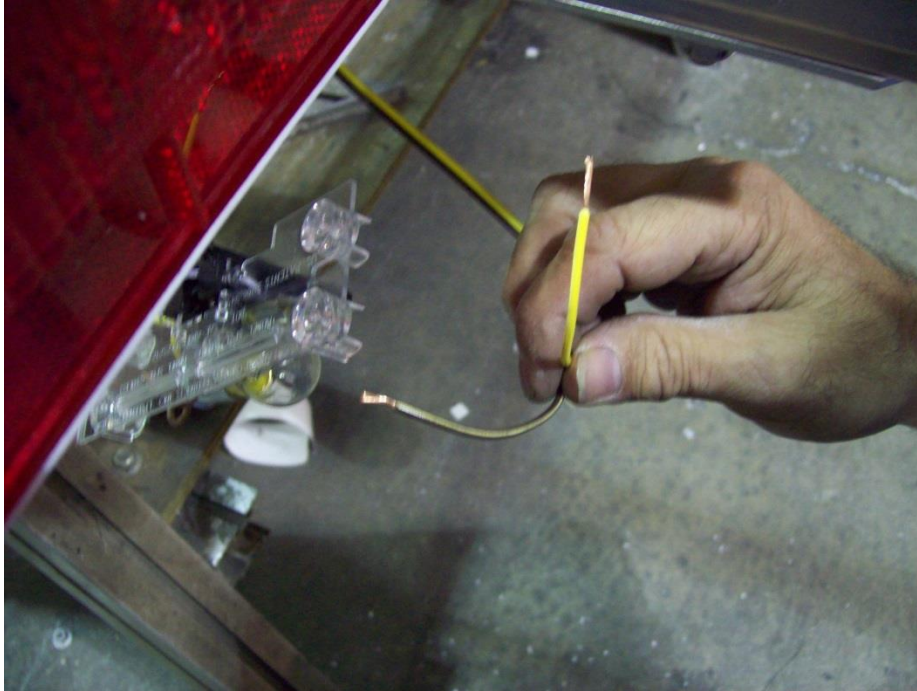
Install the left tail light with the license plate holder between the light and the bracket. Repeat for the other side. Then make sure to tighten nuts but don't over tighten them.



Slide the harness through the snap bushing and insert the bushing into the underside of the frame.



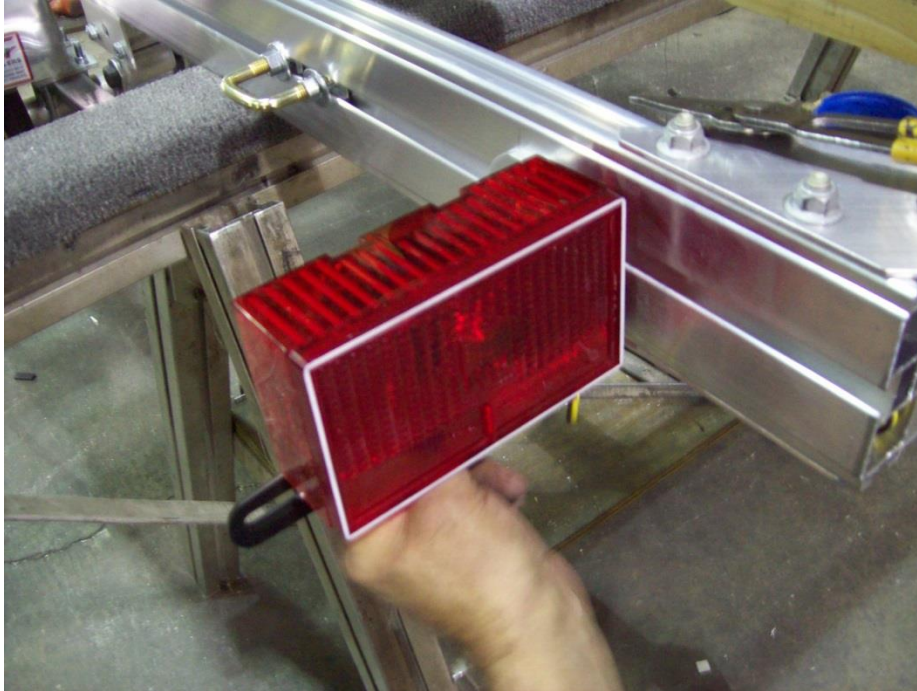
Pull the harness out pass the light and trim excess wire off.



Strip about a $\frac{1}{4}$ " of the casing off each wire.



Loosen the wire retaining screws and install color matching wires from the wire harness onto the corresponding retaining screws.



Re-install the bulb assembly into the light housing making sure to route the wires through the slot in the base of the bulb assembly.



Torque to 80 foot pounds in a cross pattern. Re-tighten after 25 miles.

Finished Trailer



KJM 11/14/16